

Quiltworx by Judy Niemeyer

**Incorrect
Center Spike Unit**

Center Spike Correction

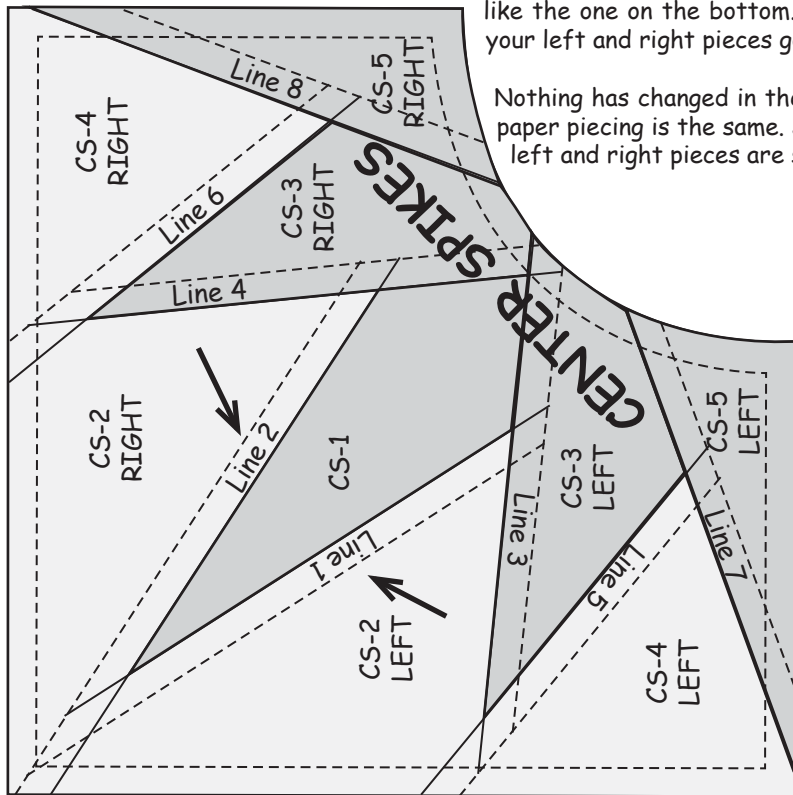
Each of the following patterns were designed using the Foundation Papers for the Center Spike Unit.

- Arizona Cactus Table Runner
- Cactus Flower Table Runner
- Farmers Star

I decided after we published these patterns to update the foundation papers with the shaded hatching on the spikes. In the process of the upgrade for the new papers (sometime in Oct. 2012) the sew lines, Line 1 and Line 2 on the new foundation papers were labeled incorrectly.

To make your corrections, just switch the numbers for Line 1 and Line 2 on your foundation papers.

Additionally, we will be adding additional labels in the future to clarify the right and left side of each unit. The new unit will look like the one on the bottom. Labeling left and right is helpful in remembering where your left and right pieces go when you sew it together.



**Corrected
Center Spike Unit**
Jan. 11, 2013

