

# Coral Reef

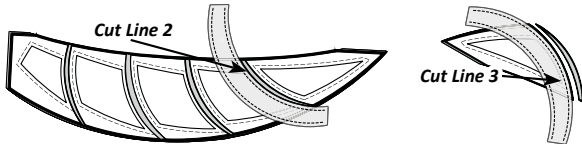
JNQ00274-C  
 NP 802 2 Pages  
 NP 803 1 Page  
 TP 602 1 Page  
 TP 603 1 Page  
 (1) Leaf Ruler

## Booklet Four

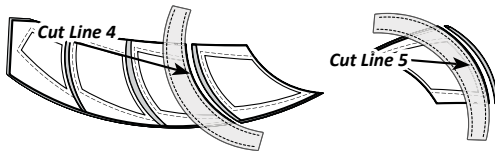
### ► Leaf Ruler Cutting Instructions

This ruler is used when cutting the papers and template pieces for (TLS #1-#4) The inside and outside radius on the Leaf Ruler is the same so both edges can be used when cutting. If the cutting along the inside edge of the curved ruler seems awkward, rotate the ruler and use the outside edge. The graphics were built using (TLS) #1, starting with Cut Line 2 on the right.

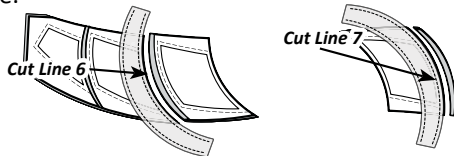
**Step 1:** Cut Line 2 is trimmed along the inside curved edge of the ruler. Rotate the stack and trim Cut Line 3 with the outside edge of the curve.



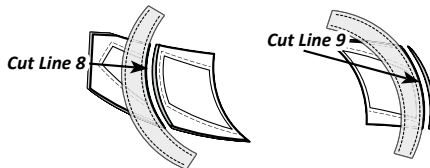
**Step 2:** Trim Cut Line 4 with Inside Curve. Trim Cut Line 5 with Outside Curve.



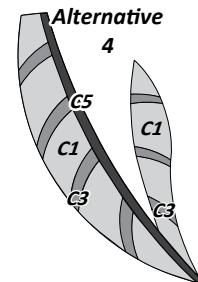
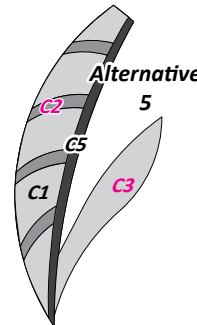
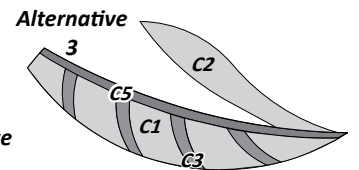
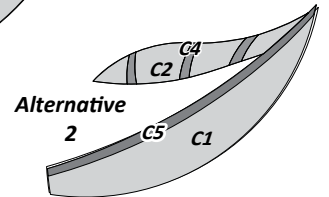
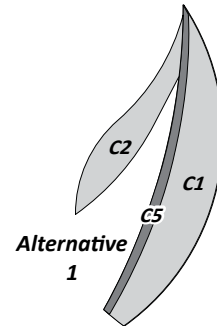
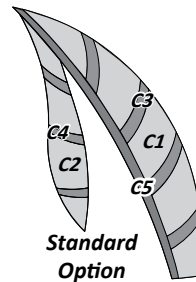
**Step 3:** Trim Cut Line 6 with Inside Curve. Trim Cut Line 7 with Outside Curve.



**Step 4:** Trim Cut Line 8 with Inside Curve. Trim Cut Line 9 with Outside Curve.



## Sea Leaf



Visit us on:



© Copyright: April 2020

Pattern: Coral Reef

All rights reserved. No part of this pattern can be reproduced in any form for any commercial purpose without the expressed written permission of Judy Niemeyer Quilting. The written instructions, foundation papers, graphics, and photographs for this pattern were designed as a package for the purpose of retail sales and as a result, fall under the protection of the federal copyright laws of the United States of America. Extra materials may be obtained from local quilt shops or directly from Judy Niemeyer Quilting aka Quiltworx.com.

Quiltworx.com  
*Judy Niemeyer Quilting*

E-mail: info@quiltworx.com • Web: www.quiltworx.com



Print Date: 12-31-20