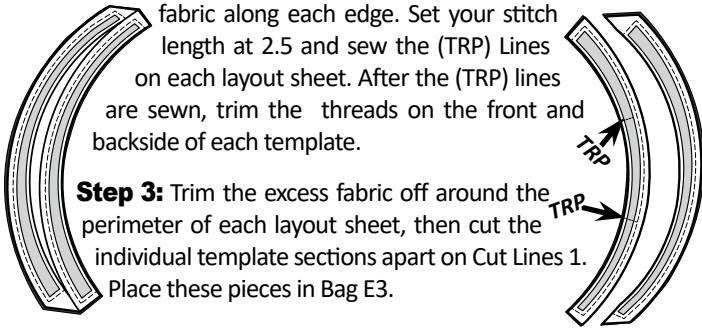


Step 2: Cut around each layout sheet leaving about 3/8" of excess

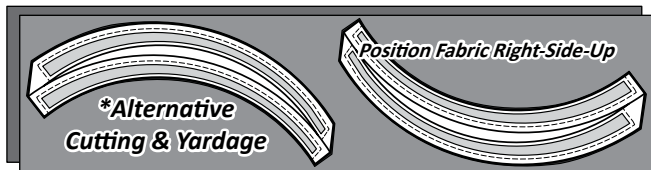


UNIT E3 ALTERNATIVE-1 CUTTING INSTRUCTIONS (TLS #15) VEIN

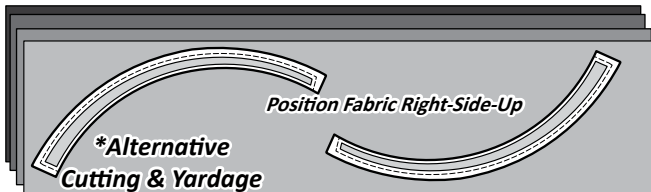
► Fabric E20: Unit E3 (TLS #15)

Cutting Strips: If you would like your veins to be cut from different fabrics, you will want to use these instructions. The strip size changes to a 13-1/2" by 42" strip for more than one Color Group. Choose your Color Group, then proceed to cut the required # of strips needed to yield the correct # of templates from each color. After that, reference back to Steps 1 to 3 for the Standard Instructions on Pages 8 and 9.

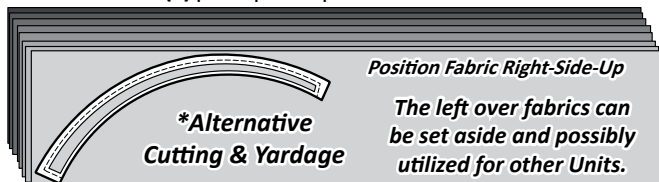
- **Two Color Group: (2)** 13-1/2" by 42" strips are used to cut (2) pieces the size of TLS #15 per strip from Fabrics E20:a and E20:b, which yields (4) pieces per color.



- **Four Color Group: (4)** 13-1/2" by 42" strips are cut. (1) from each Fabric E20:a to E20:d. TLS #15 is cut on the cut lines first, then used to cut (2) pieces per strip.



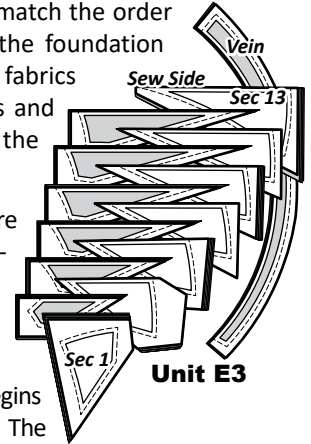
- **Eight Color Group: (8)** 13-1/2" by 42" strips are cut, (1) from each Fabric E20:a to E20:h. TLS #15 is cut on the cut lines first, then used to cut (1) piece per strip.



STACKING: UNIT E3 BAG #E1

Sewing Order: Our objective here at Quiltworx is the pre-stack the fabrics in the cutting process to match the order in which the fabric are sewn onto the foundation papers. Once the fabric are cut the fabrics are clipped to the section templates and placed into the assigned bag with the foundation papers.

Organization: The Sec. templates are stacked in sewing order facing right-side-up with the sew-sides aligned at the top. Sec. 1 does not have a sew side.

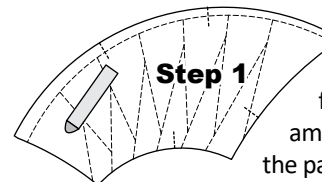
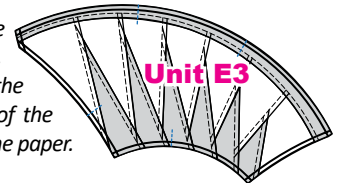


Stacking: The stacking process begins with the largest Sec. # on the bottom. The pieces are then stacked in reverse order finishing with Sec. 1 on top.

Label your Papers: If you are using more than (1) color group, it is important to label your papers as #1 to #8. It will also help to either write the Fabric reference to used on each paper or paste a small swatch of the fabric on each paper or section (if there's multiple fabrics per section) to make sure you are sewing the right fabric to the right place.

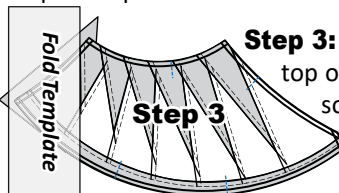
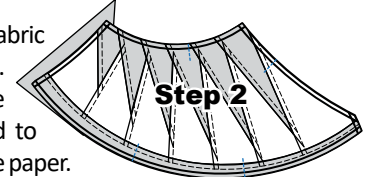
PAPER PIECING: UNIT E3, BAG #E3

NOTE - Tracing the Dashed Lines: Place the foundation paper onto a light table. Flip the foundation paper over and trace the dashed lines printed on the front side of the foundation paper, onto the backside of the paper.



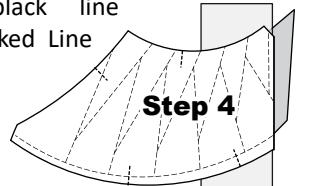
Step 1: Find Sec. 1 on the foundation paper. Place a small amount of fabric glue on the **backside** of the paper under Sec. 1.

Step 2: Position the first piece of fabric for Sec. 1 **wrong-side-up** on your table. Lift the foundation paper, slide the fabric under Sec. 1. The glue is used to adhere the fabric to the backside of the paper. Repeat Steps 1 and 2 for each foundation unit.



Step 3: Place the fold template over the top of Sec. 1. Line the edge up with the solid black line marked Line 1.

Step 4: Fold the paper back over the top of the fold template.



Step 5: Place the **Add-A-Quarter** ruler next to the folded back section lip-side down and trim the fabric with your rotary cutter. This leaves a quarter-inch seam allowance which is lined up with the sew- side on the next piece of fabric.

