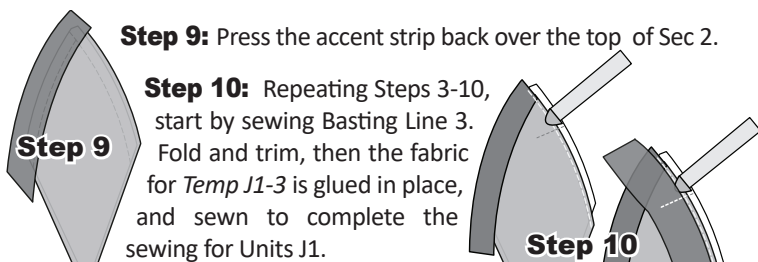


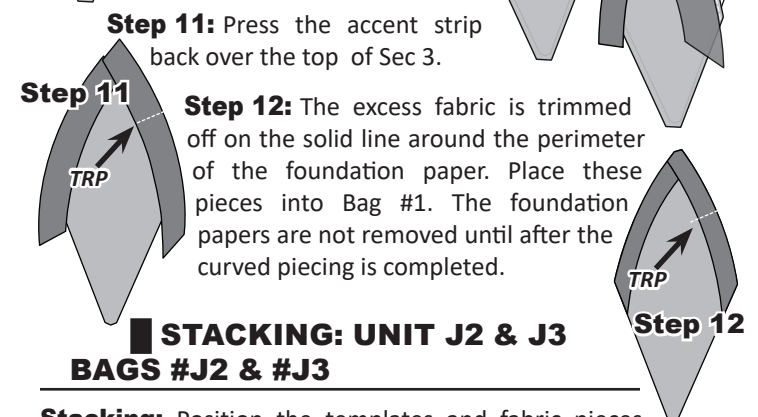
**Option One:** Sewing directly on the sew line. Position the fabric with the paper facing up, fabric on the bottom. To avoid sewing puckers into the seam, lift the paper about 1/2" and hold it slightly above the surface of the machine as you sew on the stitch line. This allow the fabric to move freely as it passes over the feed dogs on your machine.

**Option 2:** Sewing directly on the fabric. The paper is placed next to the feed dogs, fabric facing up. The edge of your quarter-inch presser foot is aligned with the basting stitch to achieve a 1/4" seam allowance. After the seam is sewn, flip the paper over and check for accuracy. Your stitching line should match up with the sew line labeled as **Sew Line 2** on the front side of the foundation paper.



**Step 9:** Press the accent strip back over the top of Sec 2.

**Step 10:** Repeating Steps 3-10, start by sewing Basting Line 3. Fold and trim, then the fabric for Temp J1-3 is glued in place, and sewn to complete the sewing for Units J1.

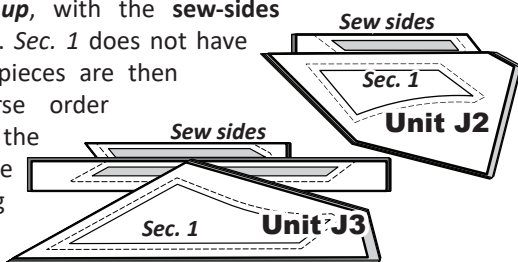


**Step 11:** Press the accent strip back over the top of Sec 3.

**Step 12:** The excess fabric is trimmed off on the solid line around the perimeter of the foundation paper. Place these pieces into Bag #1. The foundation papers are not removed until after the curved piecing is completed.

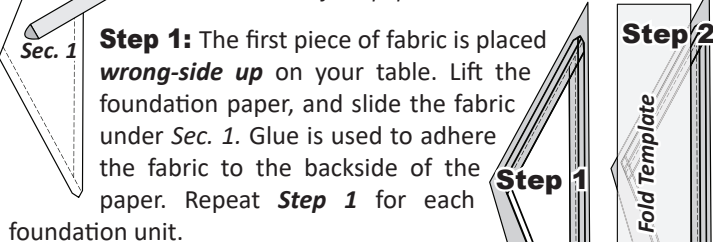
### STACKING: UNIT J2 & J3 BAGS #J2 & #J3

**Stacking:** Position the templates and fabric pieces facing *right-side up*, with the *sew-sides* aligned at the top. Sec. 1 does not have a sew side. The pieces are then stacked in reverse order starting with the largest # on the bottom finishing with Sec. 1 on top.



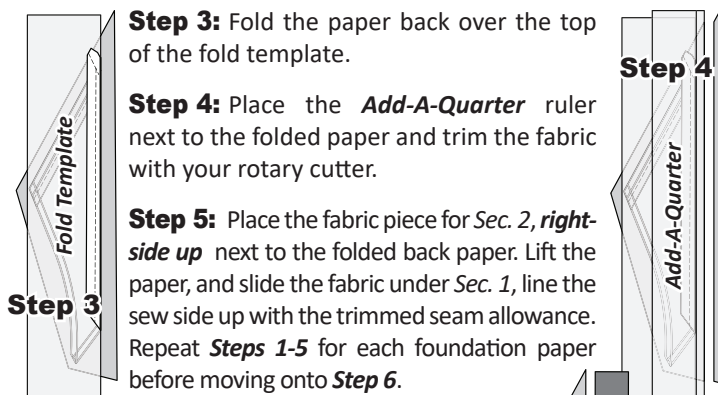
### FOUNDATION PAPER PIECING: UNIT J3

**NOTE - Tracing the Dashed Lines:** Place the foundation paper onto a light table. Flip the foundation paper over and trace the dashed lines printed on the front side of the foundation paper, onto the backside of the paper.



**Step 1:** The first piece of fabric is placed *wrong-side up* on your table. Lift the foundation paper, and slide the fabric under Sec. 1. Glue is used to adhere the fabric to the backside of the paper. Repeat **Step 1** for each foundation unit.

**Step 2:** Place the fold template over the top of Sec. 1, lining the edge up with the solid black line marked *Line 1*.



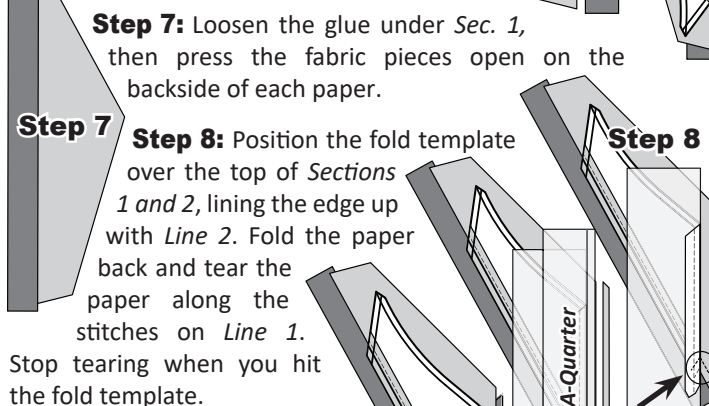
**Step 3:** Fold the paper back over the top of the fold template.

**Step 4:** Place the **Add-A-Quarter** ruler next to the folded paper and trim the fabric with your rotary cutter.

**Step 5:** Place the fabric piece for Sec. 2, *right-side up* next to the folded back paper. Lift the paper, and slide the fabric under Sec. 1, line the sew side up with the trimmed seam allowance. Repeat **Steps 1-5** for each foundation paper before moving onto **Step 6**.

**Step 6:** Sew on *Line 1*. The stitches should start and stop about 1/8" past the beginning and the end of each stitch line. Complete the sewing on each unit before moving onto the next step.

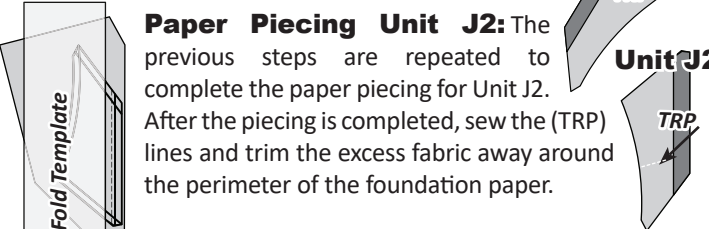
**NOTE - Trimming the Threads:** Sewing past the ends of your sew line makes it possible to cut the thread ends off each time you trim with your **Add-A-Quarter** ruler.



**Step 7:** Loosen the glue under Sec. 1, then press the fabric pieces open on the backside of each paper.

**Step 8:** Position the fold template over the top of Sections 1 and 2, lining the edge up with *Line 2*. Fold the paper back and tear the paper along the stitches on *Line 1*. Stop tearing when you hit the fold template.

**Step 9:** Trim the fabric with the **Add-A-Quarter** ruler, position the third fabric piece *right-side up* next to the paper. Lift the paper and slide the fabric under Sec. 3 in position. Open the paper, sew on *Line 2* and press.



**Paper Piecing Unit J2:** The previous steps are repeated to complete the paper piecing for Unit J2. After the piecing is completed, sew the (TRP) lines and trim the excess fabric away around the perimeter of the foundation paper.

### ASSEMBLY

**Removing Paper:** It is recommended to remove the foundation paper from each Unit J2 & J3 just prior to sewing the units together. The paper is not removed from Unit J1. The paper will work as a stabilizer as you complete the steps for the curved piecing. After the curved piecing is complete the foundation paper is removed from Unit J1. If you did not sew your **Registration Lines** do so before you remove the paper. To remove the paper, start with the last section and work backward in descending order. Gently pull the paper away from the seam. If it gets stuck in the small points,