

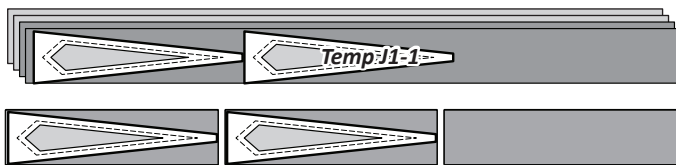
Step 4: Stack the (8) J1-2 fabric pieces, starting with *Fabric J1:b* on the bottom and *Fabric J1:a* on the top. Place these pieces with the **Foundation Papers** in Bag #J1. Repeat to stack the (8) J1-3 fabric pieces.

► **Fabrics J2:a and J2:b, Temp J1-1**

Step 1: Cut and stack (2) 3-1/2" by 42" strips each from *Fabric J2:a* and *J2:b*. Stack the strips on your cutting table facing **right-side up**, placing *Fabric J2:b* on the bottom and *Fabric J2:a* on the top.



Step 2: *Unit J1, Template J1-1* is used to cut (8) pieces matching the size and shape of the template, repositioning the template as needed for each cut.



Step 3: Stack the (8) J1-1 fabric pieces, starting with *Fabric J2:b* on the bottom and *Fabric J2:a* on the top. Place these pieces with the **Foundation Papers** in Bag #J1.



► **Fabric J3, Temp J1-4**

Step 1: Cut (1) 2-1/2" by 42" strip from *Fabric J3*, and place facing **right-side up** on your cutting table.



Step 2: *Unit J1, Template J1-4* is used to cut (4) pieces, matching the size and shape of the template pairs.



Step 3: Stack and position the (4) pieces under the template. Clip the section templates to the fabric beneath. Slice through the paper on Cut Line 1 to separate the individual sections. Place these pieces with the **Foundation Papers** in Bag #J1.



► **Fabrics J4:a and J4:b, Temp J1-5**

Step 1: Cut (1) 3" by 42" strip each from *Fabric J4:a* and *J4:b*. Stack the strips on your cutting table facing **right-side up**, placing *Fabric J4:b* on the bottom and *Fabric J4:a* on the top.



Step 2: *Unit J1, Template J1-5* is used to cut (4) pieces, (2) from each fabric, matching the size and shape of the template pairs.



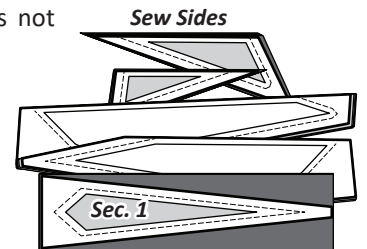
Step 3: Stack and position the (4) pieces **under the template pairs**. Clip the section templates to the fabric beneath. Slice through the paper on Cut Line 1 to separate the individual sections.



Step 4: Stack the (8) fabric pieces, starting with *Fabric J4:b* on the bottom and *Fabric J4:a* on the top. Place these pieces with the **Foundation Papers** in Bag #J1.

STACKING: UNIT J1, BAG #J1

Position the templates and fabric pieces in numerical order facing **right-side up**, with the **sew-sides** aligned at the top. *Sec. 1* does not have a sew side.

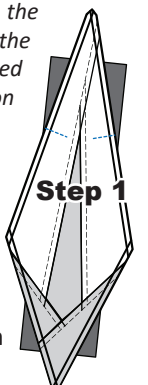
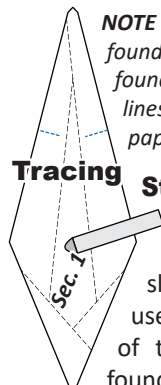


Stacking: The stacking process begins with the largest *Sec. #* on the bottom. The pieces are stacked in reverse order finishing with *Sec. 1* on top.

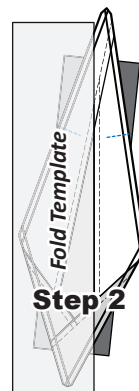
FOUNDATION PAPER PIECING: UNIT J1

NOTE - Tracing the Dashed Lines: Place the foundation paper onto a light table. Flip the foundation paper over and trace the dashed lines printed on the front side of the foundation paper, onto the backside of the paper.

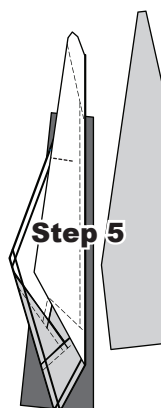
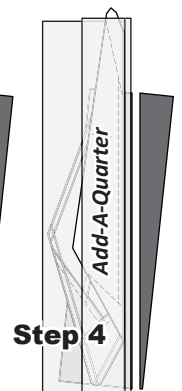
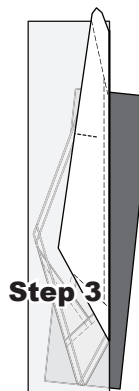
Step 1: The first piece of fabric is placed **wrong-side up** on your table. Lift the foundation paper, slide the fabric under *Sec. 1*. Glue is used to adhere the fabric to the backside of the paper. Repeat **Step 1** for each foundation unit.



Step 2: Place the fold template over the top of *Sec. 1*, lining the edge up with the solid black line marked *Line 1*.



Step 3: Fold the paper back over the fold template.



Step 4: Place the **Add-A-Quarter** ruler next to the folded back paper and trim the fabric with your rotary cutter.

Step 5: Place the fabric piece for *Sec. 2* **right-side up** next to the folded back paper. Lift the paper, and slide the fabric under *Sec. 1*, lining the sew side up with the trimmed seam allowance. Repeat **Steps 2-5** for each foundation paper before moving onto **Step 6**.