

fabric under *Sec. 1*, lining the **sew-side** up with the trimmed seam allowance. Repeat **Steps 2–5** for each foundation paper before moving onto **Step 6**.

Step 6: Sew on *Line 1*. The stitches should start and stop about 1/8" past the beginning and the end of each stitch line. Complete the sewing on each unit before moving onto the next step.

NOTE - Trimming the Threads: Sewing past the ends of your sew line makes it possible to cut the thread ends off each time you trim with your **Add-A-Quarter** ruler.

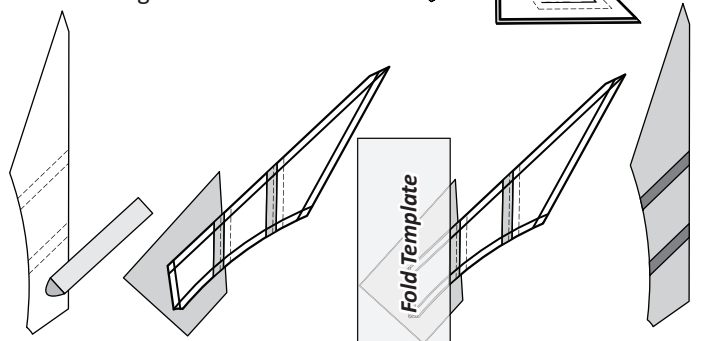
Step 7: Loosen the glue under *Sec. 1*, then press the fabric pieces open on the back side of each paper.

Step 8: Position the fold template over the top of *Sections 1 and 2*, lining the edge up with *Line 2*. Fold the paper back and trim the fabric with the **Add-A-Quarter** ruler.

Step 9: Continue adding the remaining fabrics to the foundation units. When the piecing is completed, sew the **(TRP)** lines and trim the excess fabric away around the perimeter of the foundation papers. Place these pieces back into Bag #K4.

PAPER PIECING: UNIT K2R, BAG #K3

Step 1: Repeat the previous steps to complete the paper piecing for **Unit K2R**. After the piecing is completed, sew the **(TRP)** lines and trim the excess fabric away around the perimeter of the foundation paper. Place these pieces back into Bag #K3.



GROUP K ASSEMBLY

Removing Paper: It is recommended that you only remove the foundation paper from each Unit just prior to joining it to another block or block group. Some of the elements do not require you to remove the paper until you are ready to assemble the whole quilt project, while other elements are joined at this time to complete the block group that you are working on. It is important that you read forward before sewing any of the block groups together.

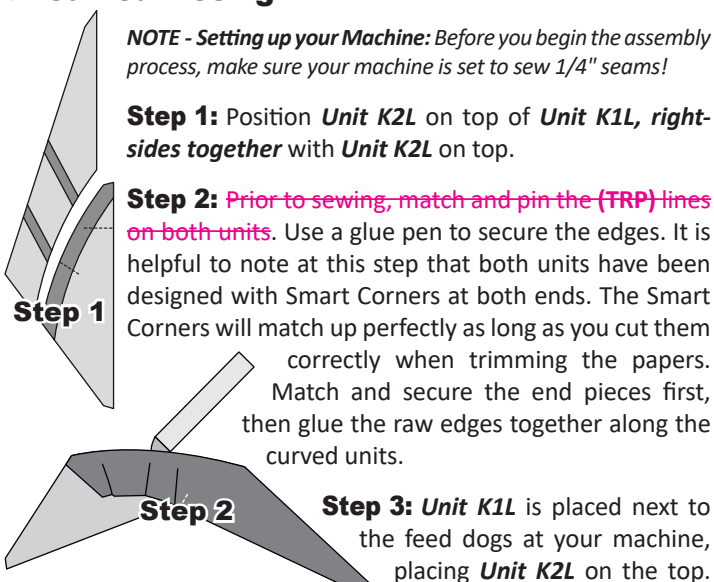
Registration Lines: If you did not sew your **Registration Lines** you will need to complete them before you remove the paper.

► Curved Piecing:

NOTE - Setting up your Machine: Before you begin the assembly process, make sure your machine is set to sew 1/4" seams!

Step 1: Position **Unit K2L** on top of **Unit K1L**, **right-sides together** with **Unit K2L** on top.

Step 2: Prior to sewing, match and pin the **(TRP)** lines on both units. Use a glue pen to secure the edges. It is helpful to note at this step that both units have been designed with Smart Corners at both ends. The Smart Corners will match up perfectly as long as you cut them correctly when trimming the papers. Match and secure the end pieces first, then glue the raw edges together along the curved units.



Step 3: **Unit K1L** is placed next to the feed dogs at your machine, placing **Unit K2L** on the top. Start sewing at the beginning point and continue the seam to the end point keeping the edges aligned as you sew. Press the seams toward **Unit K2L**.

Step 4: **Unit K1R** is now joined with **Unit K2R**. When the curved piecing is complete Press the seam toward **Unit K1R**.

Step 4: To avoid Y-seams in the assembly process, the Star Units are **NOT** joined at this time. The pieces are set aside until all the piecing is completed for the remaining groups in your quilt pattern. The fabric references match the front side of the blocks, and match Quiltster.

GROUP L: MOROCCAN STAR INSTRUCTIONS

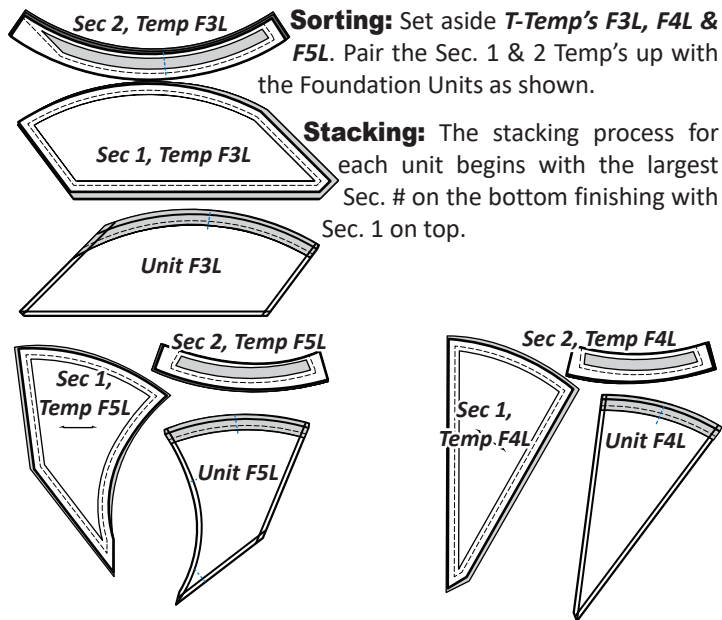
Ziploc Storage Bags: You will need **(4)** bags to complete the organization for these instructions. Label the bags as follows to stay organized while cutting the Foundation Units and Templates.

- Bag #L1: **(4)** Unit L1L Papers, and associated Templates
- Bag #L2: **(4)** Unit L1R Papers and associated Templates
- Bag #L3: **(4)** Unit L2L Papers and associated Templates
- Bag #L4: **(4)** Unit L2R Papers and associated Templates

► Preparing Foundation Papers & Templates:

Cut out **(4) ea.** of Units L1L, L1R, L2L, & L2R [NP 763 & NP 764]. The Templates and Template Layout Sheets (TLS) are placed in a temporary bag. After the fabric has been cut, the individual *Sec. Temp's* and (TLS) are placed into assigned bags with their associated foundation papers. See the newsprint graphics that follow for information on how to organize units and templates into bags. *Refer back to *General Information for Foundation papers and templates for additional instructions on how to prepare foundation papers and templates.*

UNITS F3L-F5L, T-TEMP F3L-F5L, BAG #F6



Sorting: Set aside *T-Temp's F3L, F4L & F5L*. Pair the Sec. 1 & 2 Temp's up with the Foundation Units as shown.

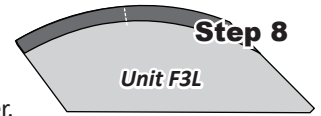
Stacking: The stacking process for each unit begins with the largest Sec. # on the bottom finishing with Sec. 1 on top.

presser foot is aligned with the basting stitch to achieve a 1/4" seam allowance.



Step 7: After the seam is completed, press the fabric on the back side of the paper.

Step 8: The excess fabric is trimmed off on the solid line around the perimeter of the foundation paper.

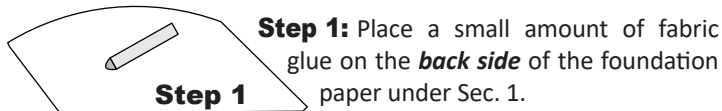


Step 9: Fold the accent strip back over the top of Sec. 1 on your foundation unit. Then trim the fabric & paper along the inside edge of the basting stitches. This will leave you with a 'scant-quarter-inch-seam' under the accent strip.



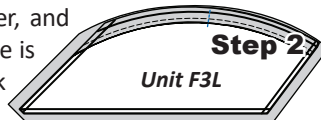
Step 10: Re-press the accent strips, and place the pieces back into Bag #F6. Do not remove the remaining foundation paper.

► Foundation Curved Piecing:

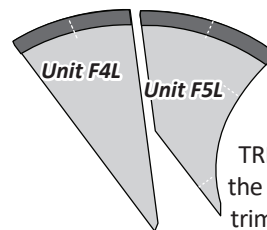


Step 1: Place a small amount of fabric glue on the *back side* of the foundation paper under Sec. 1.

Step 2: Position the first piece of fabric for Sec. 1 *wrong-side up* on your table. Lift the foundation paper, and slide the fabric under Sec. 1. The glue is used to adhere the fabric to the back side of the paper. Repeat Steps 1 and 2 for each foundation unit.



► Units F4L & F5L:



Previous Instructions: Repeat Steps 1–7 to complete the curved piecing for Units F4L & F5L. After you complete

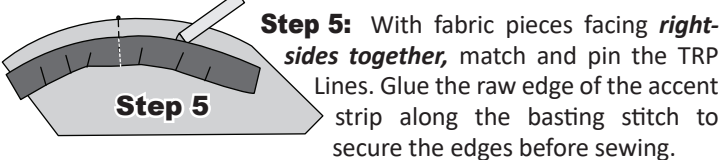
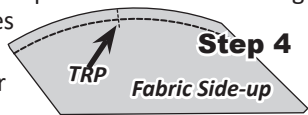
Step 7, you will need to sew the remaining TRP Lines on each foundation paper. Once the (TRP) Lines are sewn, continue with the trimming process in Steps 8 & 9. Re-press the accent strips, and place the pieces into Bag #F6.

STACKING AND FOUNDATION PIECING UNITS F3R-F5R, T-TEMP. F3R-F5R, BAG #5



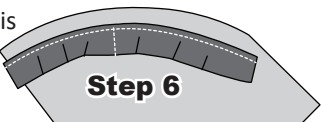
Step 3: A basting stitch is sewn the full length of the dashed line. A 2.5 stitch length is used to sew the basting stitch.

Step 4: Position *Unit F3L* fabric-side-up and locate the basting stitches. Now find the (TRP) Lines printed on the paper and mark the position on the fabric with a pin or removable marking tool.



Step 5: With fabric pieces facing *right-sides together*, match and pin the TRP Lines. Glue the raw edge of the accent strip along the basting stitch to secure the edges before sewing.

Step 6: The curved piecing is completed by sewing on Sew Line 2. There are two options on how to complete the seam.

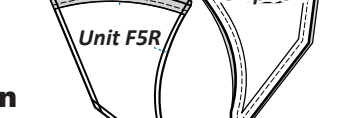
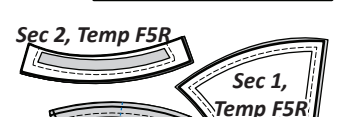
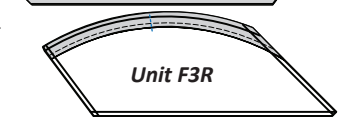
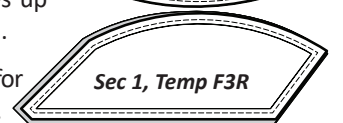
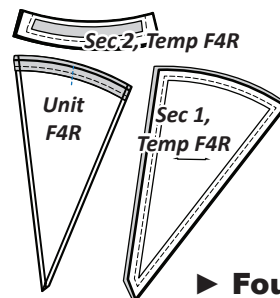


Option One: Sewing directly on the sew line. Position the fabric with the paper facing up, fabric on the bottom. To avoid sewing puckers into the seam, lift the paper about 1/2" and hold it slightly above the surface of the machine as you sew on the stitch line. This allows the fabric to move freely as it passes over the feed dogs on your machine.

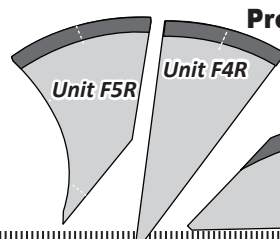
Option 2: Sewing directly on the fabric. The paper is placed next to the feed dogs, fabric facing up. The edge of your quarter-inch

Sorting: Set aside *T-Temp's F3R, F4R & F5R*. Pair the Sec. 1 & 2 Templates up with the Foundation Units as shown.

Stacking: The stacking process for each unit begins with the largest Sec. # on the bottom, finishing with Sec. 1 on top.



► Foundation Curved Piecing:



Previous Instructions:

Steps 1–10 are repeated to complete the curved piecing for Units F3R–F5R.

When you are done place the pieces into Bag #F5.