

► **Leaf Top Fabric Information:**

The *Unit Chart* that follows includes the number and size of the precut strips for each Fabric #, and a reference to which fabrics go with the Templates and (TLS) to complete **Units K1R, K1L, K2R, and K2L**. The precut fabric strips listed on the chart are located in Group Bags as noted in the pre-cutting instructions. Also, the Fabric Reference row that requires the (8) rainbow fabrics is highlighted in Grey. Put a swatch of each next to it, or just make a note. A color layout, shown below the unit chart, gives a visual reference to the location of each Fabric Color.

Units K1R, K1L, & K2R, K2L Yardage		
Make (8) ea.		
GROUP-K-002 FABRIC #	PRECUT STRIPS	ASSIGNED COLOR
Fabric K1 Temp K1L-1 & K1R-1	(4) 3-1/2" Strips	Fabric Swatch
Fabric K2 Unit K2L & K2R (TLS) #1	(2) 6-1/2" Strips	Fabric Swatch
Rainbow Fabrics K3: a,b,c,d,e,f,g,h Unit K2L & K2R (TLS) #2 & 3	(1) 3-1/4" strip of each color	Fabric Swatch
Rainbow Fabric s K4: a,b,c,d,e,f,g,h Unit K2L & K2R (TLS) #4	(1) 1-1/2" strip of each color	Fabric Swatch

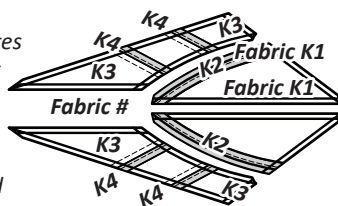
► **Color Layout**

NOTE - Backside Graphic: The color layout shown matches the printed side of the paper and the backside of the quilt.

NOTE - Stacking strips: *Templates and (TLS) are repositioned on the cut strips to achieve the number of cuts required in the cutting instructions. Please read carefully to ensure the correct # of pieces are stacked beneath each Template before cutting.

NOTE - Glue: Repositionable glue placed on the backside of each template will keep the templates and (TLS) from moving in the cutting process. After each cut simply reposition the template to the next location.

Note: Each Unit is made with (1) color from each Fabric K3: a-h and K4:a-h

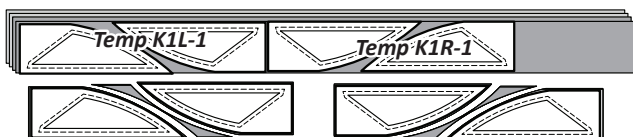


► **Fabrics K1, Temp K1R-1 & K1L-1**



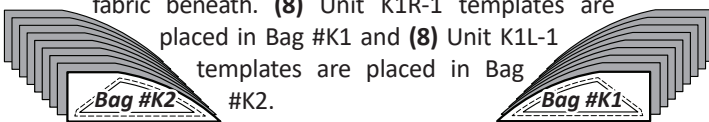
Step 1: Stack the (4) 3-1/2" by 42" precut strips from *Fabric K1* onto your cutting table facing **right-side up**.

Step 2: *Unit K1R, Template K1R-1* and *Unit K1L, Template K1L-1* are used to cut (8) pieces each, matching the size and shape of each template, repositioning the templates for each cut. The Curved



Diamond Cutting and Trimming Ruler is a great tool for the curved edges.

Step 3: Paper clips are used to clip the paper templates to the fabric beneath. (8) Unit K1R-1 templates are placed in Bag #K1 and (8) Unit K1L-1 templates are placed in Bag #K2.

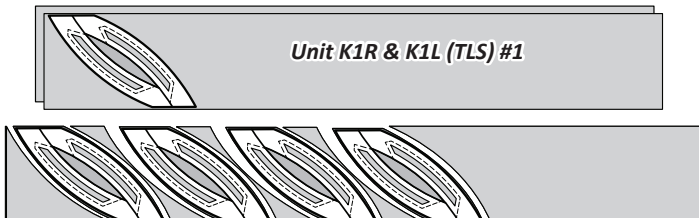


► **Fabrics K2 (TLS) #1**

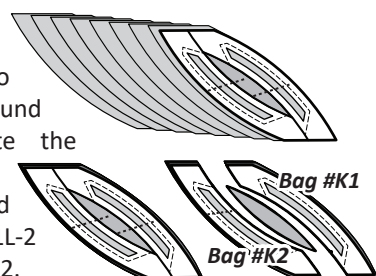
Step 1: Stack the (2) 6-1/2" by 42" precut strips from *Fabric K2* onto your cutting table facing **right-side up**.



Step 2: *Unit K1L & K1R (TLS) #1* is placed onto the strip as shown. Cut (8) pieces, matching the size and shape of the Layout Sheet, repositioning the (TLS) as needed for each cut. The Curved Diamond Cutting and Trimming Ruler is a great tool for the curved edges.



Step 3: Stack the (8) fabric pieces with *Fabric K2:b on the bottom; then K2:a on the top*. Position the (TLS) on the top layer and clip the Sec. Templates onto the fabric beneath. Cut around each template to separate the individual sections. (8) Unit K1R-2 templates are placed in Bag #K1 and (8) Unit K1L-2 templates are placed in Bag #K2.



► **Fabric K3: (TLS) #2 & 3**

Step 1: Re-stack the (8) 3-1/4" by 42" precut strips from *Rainbow Fabric K3:a-h* onto your cutting table facing **right-side up**. The colors for your strips should be stacked in alphabetical order with Fabric J3:h (green) on the bottom and Fabric J3:a (yellow) on the top.

Step 2: *Unit K2R (TLS) #3* and *K2L (TLS) #2* are placed onto the strips as shown.



Step 3: Cut (8) pieces, one from each color, matching the size of each (TLS).



Step 4: Clip the Sec. Templates to the fabric beneath and complete the cutting by slicing through the paper and fabric on each Cut Line 1 in numerical order. The Unit K2R templates are placed in Bag #K3 and the Unit K2L templates are placed in Bag #K4.

