

## CURVED PIECING

**NOTE - Machine Settings:** Set your machine to sew a quarter-inch seam allowance before you begin the curved piecing.

**Step 1:** Prior to starting the curved piecing, you will need to remove the foundation papers from **Unit B1**.



Steps 2 & 3

**Step 2:** Position one **Unit B1**, onto the top of each **T-Temp B1** with **right-sides together**. Match and pin the first edge, weaving the pin through both pieces along the sides to hold the edges together. The weaving provides a more secure hold than simply pinning the edges one time.

**Step 3:** Pin the second edge weaving the pin as before. Using a glue pen, dab a small amount of glue around the perimeter of the convex edge of **Unit B1**, quickly shape, and match the curved edges together before the glue dries.

**Step 4:** Position the pieces at your machine with the **B1 Units** on top, next to the presser foot. This will result with each **T-Temp B1** on the bottom next to the feed dogs.

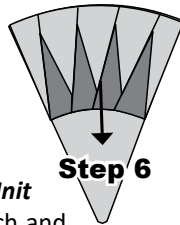


Step 4

**NOTE - Purple Thang:** The Purple Thang works great as a third finger to help hold the pieces together when sewing the curves. It can be used to smooth out pleats and hold the edges together.

**Step 5:** Make sure your machine is set to sew a quarter-inch seam allowance before completing the curved seams.

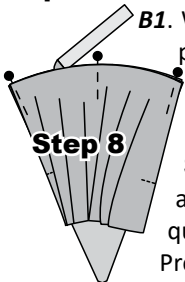
**Step 6:** Press the curved seams towards **T-Temp B1**.



Step 6

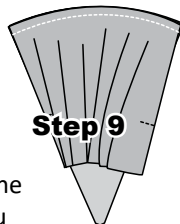
**Step 7:** Remove the foundation papers from **Unit B2**.

**Step 8:** The **Unit B2** pieces, are sewn onto **Unit B1**. With **right-sides together** match and pin the edges. Glue along the perimeter of the convex edge of **Unit B1**, and match the curved edges before the glue dries.



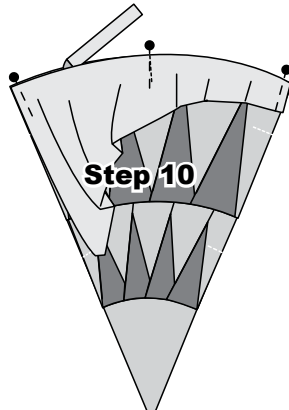
Step 8

**Step 9:** Position the pieces at your machine and sew a quarter-inch seam allowance. Press the curved seams towards **Unit B1**.



Step 9

**Step 10:** **T-Temp B2L** and **B2R** are sewn onto the **Unit B2** pieces to complete the units. Before you begin sewing match the **(TRP) Lines** in the center of both pieces and then both ends. Use your glue pen to secure the curved edges. Sew the quarter-inch seam then press the seams toward **T-Temp B2L** and **B2R**.

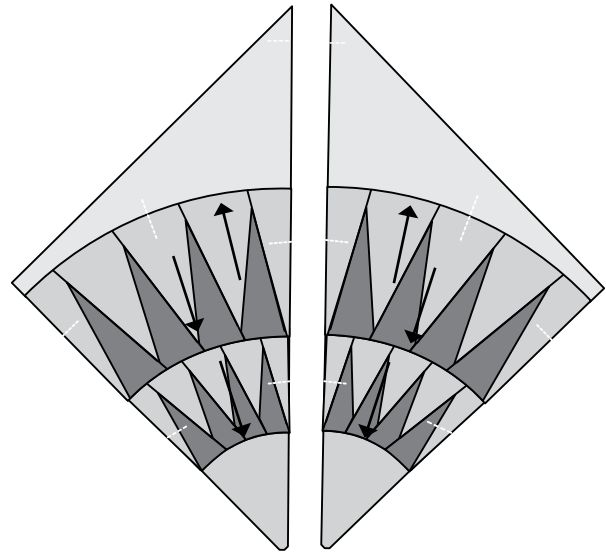


Step 10

## Finishing the Block

To avoid Y-seams in the assembly process, the left and right units are not joined at this time. The pieces are set aside until all the piecing is completed for the remaining groups in your pattern.

## Group A: Block BB



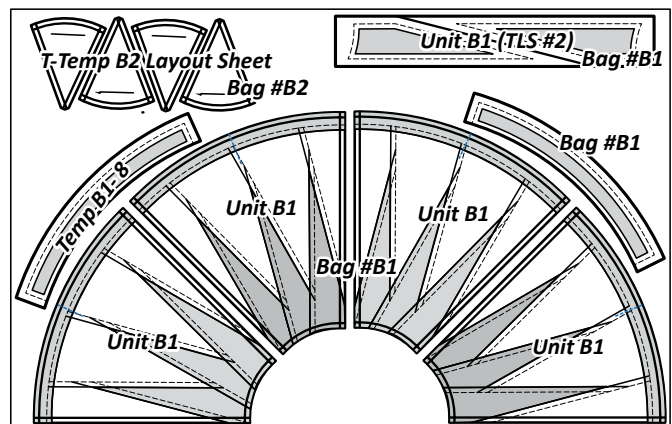
## GROUP B: TRELLIS FENCE BORDER

**Ziploc Storage Bags:** You will need (2) bags to complete the organization for these instructions. Label the bags as follows. The Templates and Template Layout Sheets are placed into their respective bags after the cutting is complete with the fabric.

- **Bag #B1:** (16) **Unit B1** Foundation Papers, Template B1-8, and associated (TLS #1 & #2).
- **Bag #B2:** T-Templates B2, B1L, B3L, B4L, B1R, B3R, B4R.

## PREPARING THE FOUNDATION PAPERS:

**Foundation Papers:** Cut out the Foundation Papers and cutting templates included on [NP 732] and [TP 547]. Reference the newsprint graphics that follow for the location of each Unit, Template, and Template Layout Sheet along with the associated Bag # and number of pieces to cut, if applicable. \*Refer back to General Information for Foundation Papers and Templates for additional instructions on how to prepare your foundation papers and templates.



(4) NP 732