

Step 2: Set your stitch length at 2.8 and sew the (TRP) Line printed on each *T-Template A-5*. The threads are trimmed on the front and backside of each template after the sewing is complete.

Step 3: Clip the pieces together with the T-Template on top, and place into Bag #AB1.

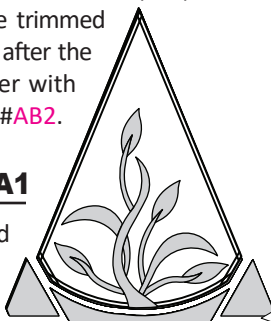
Accent Fabric AB6: Cut (2) 20" x 42" strips and place it on the cutting table facing *right-side-up*.



Step 1: Position the *T-Template A-1* onto the stack as shown. Cut around the perimeter of each T-Template. This cut should be an exact cut, since this is a T-Template. So, if you are not comfortable getting an accurate cut through (2) strips of fabric, cut the strips separately instead of stacked.



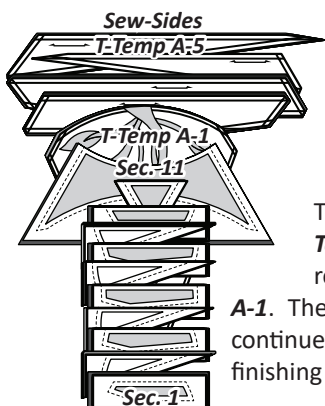
Step 2: Set your stitch length at 2.8 and sew the three (TRP) Lines printed on *T-Template A-1*. The threads are trimmed on the front and backside of each template after the sewing is complete. Clip the pieces together with the T-Template on top, and place into Bag #AB2.



STACKING: BAG #AB1, UNIT A1

Sort the pieces in numerical order. You should have (8) pieces clipped to each template. Position the templates and fabric pieces

facing *right-side-up*, with the *sew-sides* aligned at the top. Sec. 1 does not have a sew side.

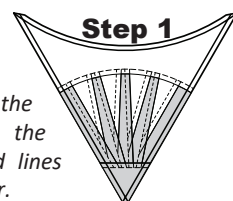


Stacking Order Unit A1

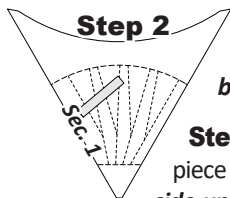
The stacking process begins with *T-Template A-5* on the bottom, stacking in reverse numerical order, to *T-Template A-1*. Then, start with Sec. 11, Temp A1-4, and continue in stacking in reverse numerical order, finishing with Sec. 1 on top as shown.

FOUNDATION PAPER PIECING, BAG #AB1

Step 1: Place Unit A1 *right-side-up* onto your table and position as shown.

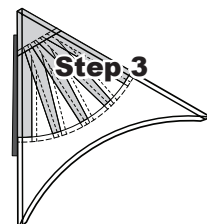


NOTE - Tracing the Dashed Lines: Place the foundation paper onto a light table. Flip the foundation paper over and trace the dashed lines printed on the front side of the foundation paper.



Step 2: Find Sec. 1 on the foundation paper. Place a small amount of fabric glue on the *backside* of the paper under Sec. 1.

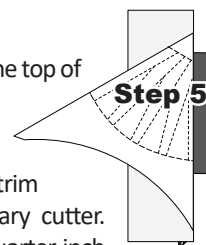
Step 3: Position the first piece of fabric for Sec. 1 *wrong-side-up* on your table. Lift the foundation paper, slide the fabric under Sec. 1 and glue the first piece of fabric to the backside of the paper. Step 3 is repeated for each unit before moving onto Step 4.



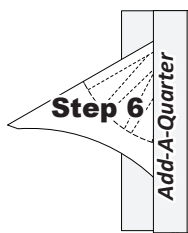
NOTE - Fabric Placement: The *wrong-side* of the fabric is against the backside of the paper.

Step 4: Place the fold template over the top of Sec. 1, lining the edge up on the solid black line marked Line 1.

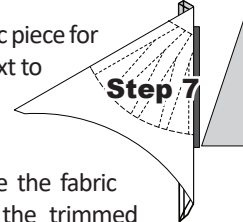
Step 5: Fold the paper back over the top of the fold template.



Step 6: Place the *Add-A-Quarter* ruler next to the folded back section lip-side down and trim the fabric with your rotary cutter. This leaves you with a quarter-inch seam allowance, which is lined up with the sew side on the next piece of fabric.



Step 7: Place the fabric piece for Sec. 2, *right-side-up* next to the folded back paper as shown.

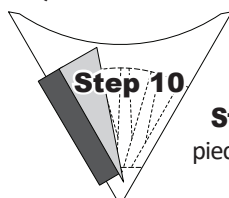


Step 8: Lift the foundation paper and slide the fabric under Sec. 2. Line the sew-side up with the trimmed quarter-inch seam allowance. Make sure the fabric extends beyond the boundaries of the dashed lines for Sec. 2. Repeat Steps 4-8 for each foundation paper before moving onto Step 9.



Step 9: Sew on Line 1. The stitches should start and stop about 1/8" past the beginning and the end of each stitch line. Complete the sewing on each Unit before moving onto the next step.

NOTE - Trimming the Threads: Sewing past the ends of your sew line makes it possible to cut the thread ends off each time you trim with your Add-A-Quarter ruler.



NOTE - Loosen the Glue: Loosen the glue under Sec. 1. This should be done before you press.

Step 10: Flip the papers over, press the fabric pieces open on each paper.