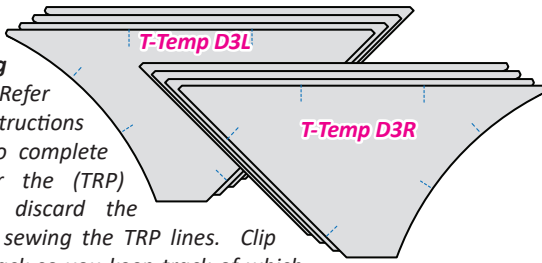


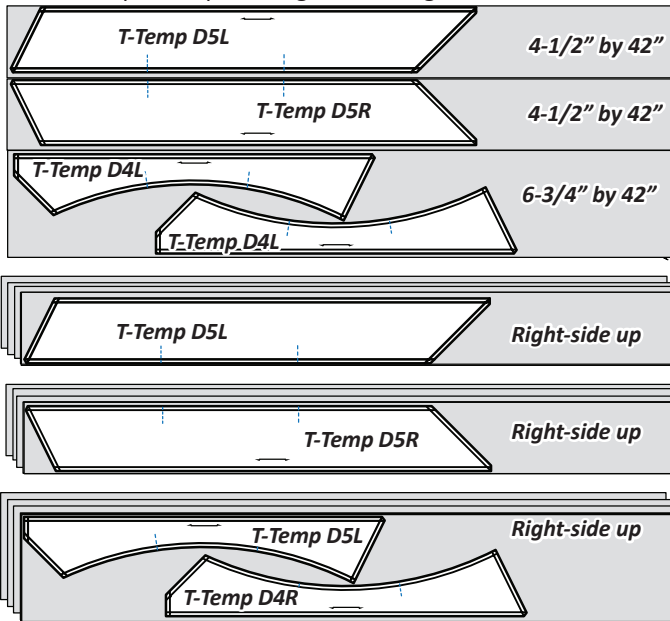
Step 2: Cut (4) pieces measuring the same size and shape of each *T-Template D3R & D3L*. Reposition the templates for each additional cut. Accuracy is important when cutting these templates.

NOTE - Sewing the TRP Lines: Refer back to the instructions for Fabric D6 to complete the sewing for the (TRP) Lines. Do not discard the Templates after sewing the TRP lines. Clip them to each stack so you keep track of which piece goes where.



► **Fabric D16: T-Temp D4R, D5R, D4L, & D5L, Bag #4**

Step 1: Cut and stack (4) 15-3/4" by 42" strips. Stack the strips facing *right-side up* on the table. Then subcut (2) 4-1/2" by 42" strip stacks and (1) 6-3/4" x 42" strip stack. Apply a small amount of repositionable fabric glue on the backside of each template before you position the templates onto your stacks. The backside of each template is placed against the right-side of the fabric.

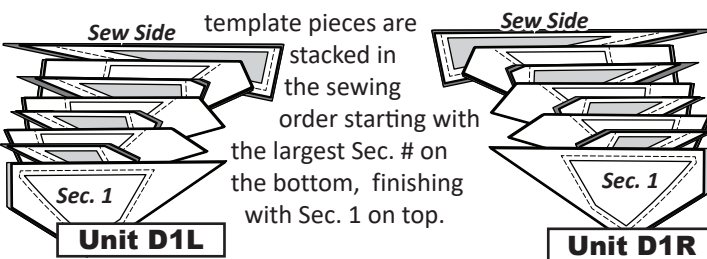


Step 2: Cut (4) pieces measuring the same size and shape of each *T-Template D4R, D4L, D5R, & D5L*. Accuracy is important when cutting these templates.

Step 3: Add the TRP lines using the same steps described for previous blocks.

■ **STACKING: UNIT D1L & D1R, BAG #D1 & D2**

The D1L and D1R units are stacked and assembled the same. The template pieces are stacked in the sewing order starting with the largest Sec. # on the bottom, finishing with Sec. 1 on top.

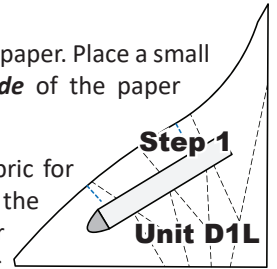


■ **FOUNDATION PAPER PIECING: BAGS #D1 & #D2**

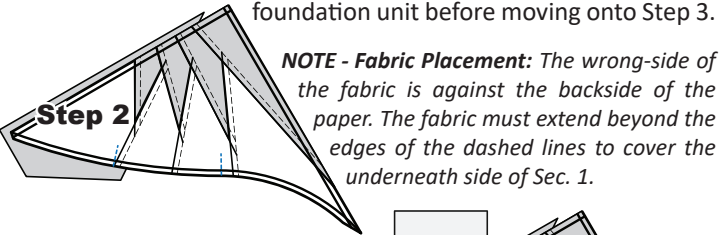
NOTE - Tracing the Dashed Lines: Once you are familiar with the process for Foundation Paper Piecing, tracing the backside of the foundation paper become optional.

Step 1: Find Sec. 1 on the foundation paper. Place a small amount of fabric glue on the *backside* of the paper under Sec. 1.

Step 2: Position the first piece of fabric for Sec. 1 *wrong-side up* on your table. Lift the foundation paper, slide the fabric under Sec. 1 and glue the first piece of fabric to the backside of the paper. Steps 1 & 2 are repeated for each foundation unit before moving onto Step 3.



NOTE - Fabric Placement: The wrong-side of the fabric is against the backside of the paper. The fabric must extend beyond the edges of the dashed lines to cover the underneath side of Sec. 1.



Step 3: Place the fold template over the top of Sec. 1. Line the edge up with the solid black line marked Line 1.

Step 4: Fold the paper back over the top of the fold template.

Step 5: Place the *Add-A-Quarter* ruler next to the folded back section lip-side down and trim the fabric with your rotary cutter. This leaves you with a quarter-inch seam allowance which, is lined up with the sew side on the next piece of fabric.

Step 6: Place the fabric piece for Sec. 2, *right-side up* next to the folded back paper.

Step 7: Lift the foundation paper and slide the fabric under Sec. 2. Line the sew-side up with the trimmed quarter-inch seam allowance. Make sure the fabric extends beyond the boundaries of the dashed lines for Sec. 2. Repeat Steps 3-7 for each foundation paper before moving onto the next step.

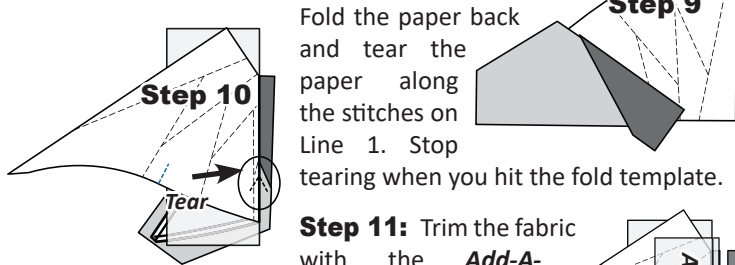
Step 8: Sew on Line 1. The stitches should start and stop about 1/8" past the beginning and the end of each stitch line. Complete the sewing on each Unit before moving onto the next step.

NOTE - Trimming the Threads: Sewing past the ends of the sew line allows for cutting the thread ends off each time you trim with your *Add-A-Quarter* ruler.

NOTE - Before you Press: Loosen the glue under Sec. 1. This should be done before you press.

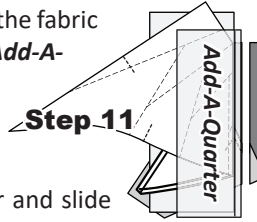
Step 9: Flip the papers over, press the fabric pieces open on each paper.

Step 10: Position the fold template over the top of Sections 1 and 2, lining the edge up with Line 2.

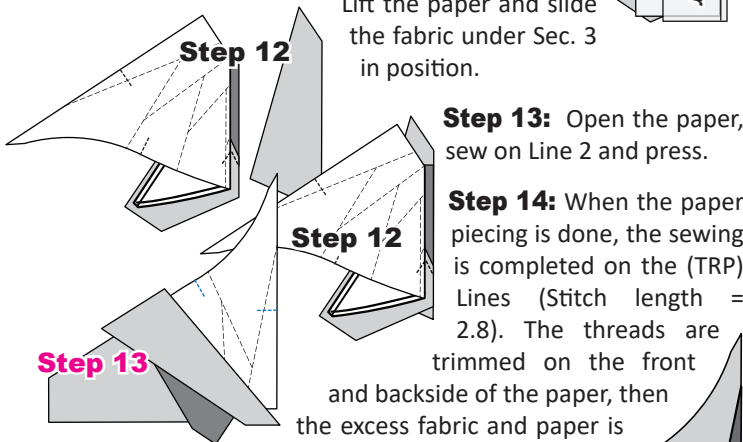


Fold the paper back and tear the paper along the stitches on Line 1. Stop tearing when you hit the fold template.

Step 11: Trim the fabric with the **Add-A-Quarter** ruler.



Step 12: Position the third fabric piece **right-side up** next to the paper.



Lift the paper and slide the fabric under Sec. 3 in position.

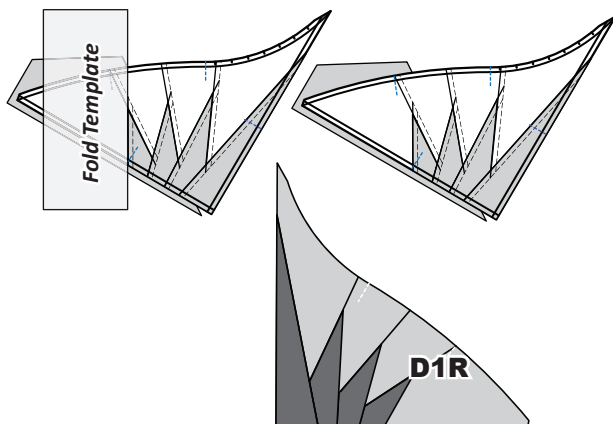
Step 13: Open the paper, sew on Line 2 and press.

Step 14: When the paper piecing is done, the sewing is completed on the (TRP) Lines (Stitch length = 2.8). The threads are trimmed on the front and backside of the paper, then the excess fabric and paper is trimmed off around the

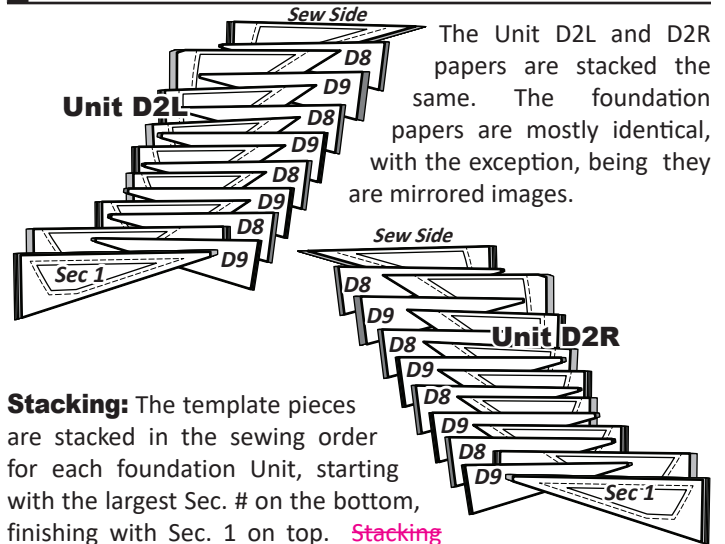
perimeter of the exterior dark line printed on the foundation paper. Do not remove the foundation paper at this time. Place the pieces into **Bag #D2**.

► Unit D1R

The paper piecing is the same for Unit D1R. Step 1 & 2 have been provided to help you get started with the paper piecing. If you need additional help refer back to the previous instructions for Unit D1L. Don't forget to sew the (TRP Lines).



STACKING: UNITS D2L & D2R BAG #D3



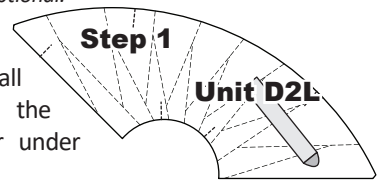
The Unit D2L and D2R papers are stacked the same. The foundation papers are mostly identical, with the exception, being they are mirrored images.

Stacking: The template pieces are stacked in the sewing order for each foundation Unit, starting with the largest Sec. # on the bottom, finishing with Sec. 1 on top. **Stacking illustrations for units D2L and D2R have been provide on Page 2, located with the Color Layout.**

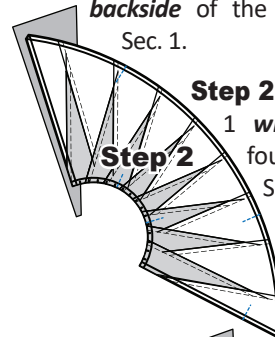
FOUNDATION PAPER PIECING: UNIT D2L AND D2R, BAG #D3

NOTE - Tracing the Dashed Lines: Optional.

Step 1: Find Sec. 1 on the foundation paper. Place a small amount of fabric glue on the **backside** of the paper under Sec. 1.



Step 2: Position the first piece of fabric for Sec. 1 **wrong-side up** on your table. Lift the foundation paper, slide the fabric under Sec. 1 and glue the first piece of fabric to the backside of the paper. Steps 1 & 2 are repeated for each foundation unit before moving onto Step 3.

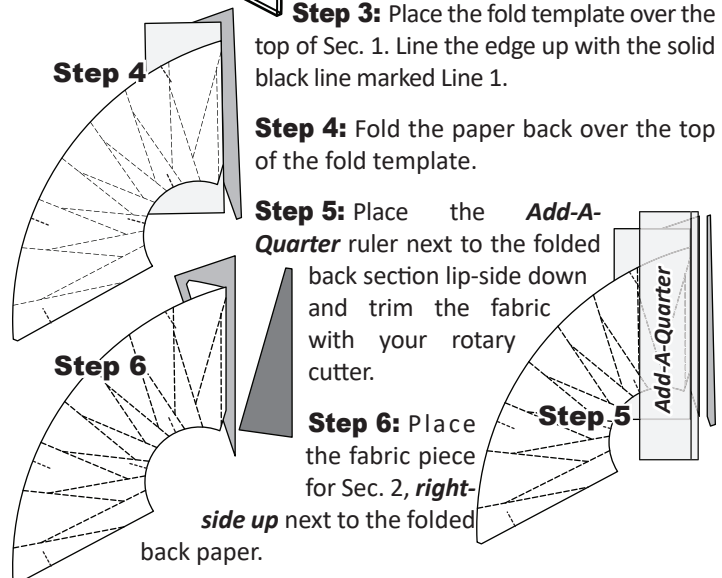


Step 3: Place the fold template over the top of Sec. 1. Line the edge up with the solid black line marked Line 1.

Step 4: Fold the paper back over the top of the fold template.

Step 5: Place the **Add-A-Quarter** ruler next to the folded back section lip-side down and trim the fabric with your rotary cutter.

Step 6: Place the fabric piece for Sec. 2, **right-side up** next to the folded back paper.



Step 7: Lift the foundation paper and slide the fabric under Sec. 2 lining the sew-side up with the trimmed seam allowance. Repeat Steps 3-7 for each foundation paper before moving onto the next step.

Step 8: Sew on Line 1. The stitches should start and stop about 1/8" past the beginning and the end of each stitch line. Complete the sewing on each unit before moving onto the next step.

Step 9: Flip the papers over, press the fabric pieces open on the backside of each paper.

Step 10: Position the fold template over the top of Sections 1 and 2, lining the edge up with Line 2. Fold the paper back and tear the paper along the stitches on Line 1. Stop tearing when you hit the fold template.

Step 11: Repeat the previous steps to complete the piecing for Units D2L. When the paper piecing is done, the sewing is completed on the (TRP) Lines. The threads are trimmed on the front and backside of the paper, then the excess fabric and paper is trimmed off around the perimeter of the exterior dark line printed on the foundation paper.

Step 12: Do not remove the foundation paper at this time. Place the pieces into Bag #D3.

► Unit D2R

The paper piecing is the same for Unit D2R. Step 1 & 2 have been provided to help you get started with the paper piecing. If you need additional help refer back to the previous instructions for Unit D2L.

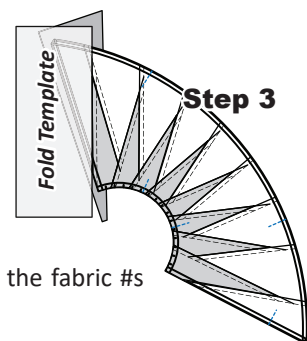
► Foundation Strip Piecing: Units D3L, D4L, D3R, & D4R, Bag #D4

Step 1: Cut the 2-1/4" x 42" strips from Colors #1, #2, #3, and #4 in half (2-1/4" x 21").



Step 2: Then, sort and stack the colors in the sewing order for each Foundation Unit. The order in which the fabrics are sewn

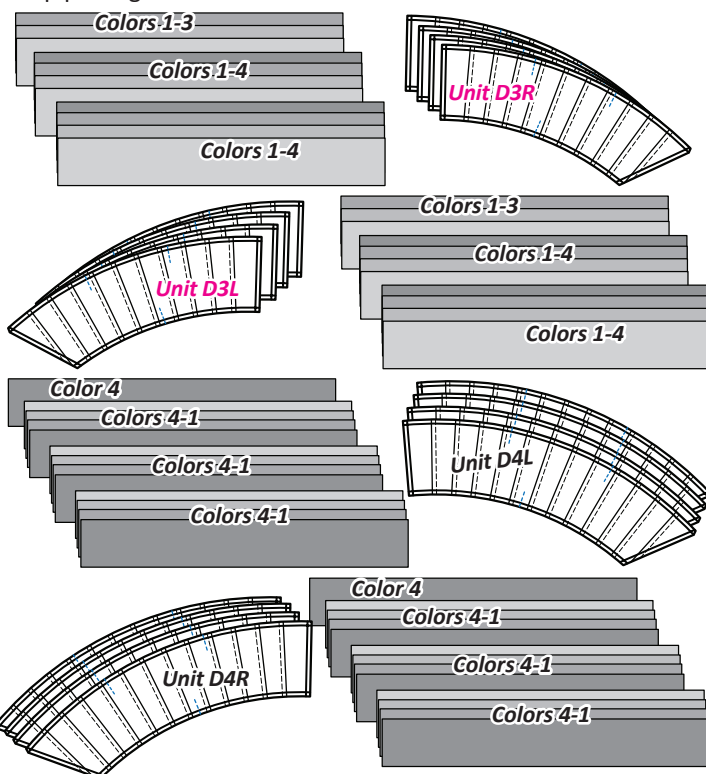
onto the foundation papers has been assigned and printed onto the foundation papers. Note that the Color #s printed on the foundation units are referred to as Color #1-#4. In your cutting instructions these fabrics are referred to as Fabric D11-D14. In the cutting instructions you were told to label the fabric #s with their associated Colors #.



Four (4) foundation papers are sewn onto each 21" strip.

Please note the first strip placed under Sec. 1 on Foundation Units D3R and D3L is Color #1. The first strip placed under Sec. 1 on Foundation Units D4R and D4L is Fabric #4. Fabric swatches should be pasted into each section on the first foundation unit for each group to assure you are adding the strips in the correct order.

Step 3: Clip the groups of strips and foundation papers together as shown in the graphic below so you are prepared for foundation strip piecing.



► Strip Piecing Unit D3R

Step 1: Position Strip #1, and Strip #2 on your table. Stack the strips facing *right-sides-together*, Strip #1 is on the top, Strip #2 on the bottom (shown to right).

Step 2: Position the first piece of foundation paper, Unit D3R, *right-side up*, onto the top of Strip #1. Center Sec. 1, over the fabric. Line the first dashed line printed on the paper up with the edge of both fabric strips. A pin is placed through the paper and fabric to secure the first piece from moving.