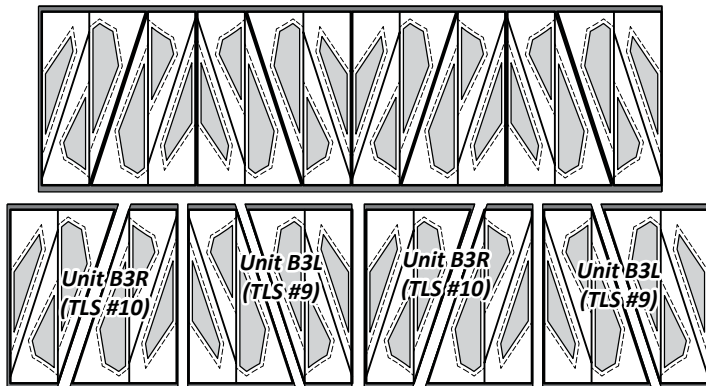
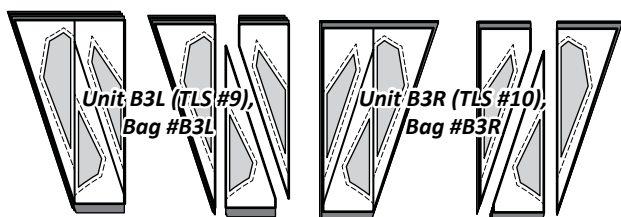


Step 2: *Unit B3L and B3R (TLS #9 & #10)* are placed onto the strips as shown. Cut (4) pieces, matching the size and shape of each TLS.



Step 3: Stack (4) pieces under each TLS. A paper clip is used to clip each section to the fabric to keep the template pieces from moving in the cutting process.



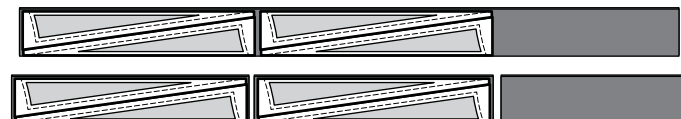
Step 4: The cutting is completed by slicing through the paper on each *Cut Line* to separate the individual sections. Place the individual template pieces clipped to the fabric beneath labeled with B3L into Bag #BA3-L and the pieces that are labeled with B3R into Bag #BA3-R.

► **Fabrics BA12: Unit B3R (Temp B3R-13)**

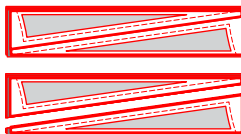
Step 1: Cut (1) 3" by 42" strip from *Fabric BA12*, and place facing *right-side up* on your cutting table.



Step 2: *Unit B3R-13 Temp* is placed onto the strips as shown. Cut (4) pieces, matching the size and shape of the template.



Step 3: Clip the template to the fabrics beneath and place the pieces into Bag #BA3-R.

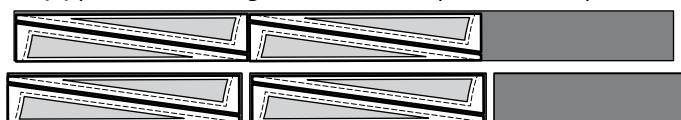


► **Fabrics BA13: Unit B3L (Temp B3L-13)**

Step 1: Cut (1) 3" by 42" strips from *Fabric BA13*, and place facing *right-side up* on your cutting table.



Step 2: The *Unit B3L-13 Temp* is placed onto the strips as shown. Cut (4) pieces, matching the size and shape of the template.

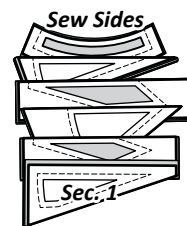


Step 3: Clip the template to the fabrics beneath and place the stack into Bag #BA3-L.



STACKING: UNIT B1 BAG #BA1

Position the templates and fabric pieces in numerical order facing *right-side up*, with the *sew-sides* aligned at the top. *Sec. 1* does not have a sew side.

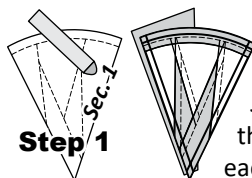


Stacking: The stacking process begins with the largest *Sec. #* on the bottom. The pieces are stacked in reverse order finishing with *Sec. 1* on top.

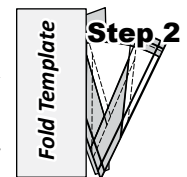
FOUNDATION PAPER PIECING: UNIT B1

NOTE - Tracing the Dashed Lines: Place the foundation paper onto a light table. Flip the foundation paper over and trace the dashed lines printed on the front side of the foundation paper, onto the backside of the paper.

Step 1: The first piece of fabric is placed *wrong-side up* on your table. Lift the foundation paper, slide the fabric under *Sec. 1*. Glue is used to adhere the fabric to the backside of the paper. Repeat **Step 1** for each foundation unit.



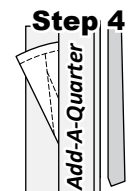
Step 2: Place the fold template over the top of *Sec. 1*, lining the edge up with the solid black line marked *Line 1*.



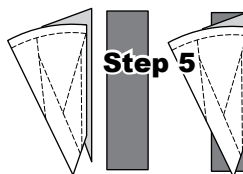
Step 3: Fold the paper back over the top of the fold template.



Step 4: Place the *Add-A-Quarter* ruler next to the folded paper and trim the fabric with your rotary cutter.



Step 5: Place the fabric piece for *Sec. 2*, *right-side up* next to the folded back paper. Lift the paper, and slide the fabric under *Sec. 1*, line the sew side up with the trimmed seam allowance. Repeat **Steps 1-5** for each foundation paper before moving onto **Step 6**.



Step 6: Sew on *Line 1*. The stitches should start and stop about 1/8" past the beginning and the end of each stitch line. Complete the sewing on each unit before moving onto the next step.

NOTE - Trimming the Threads: Sewing past the ends of your sew line makes it possible to cut the thread ends off each time you trim with your *Add-A-Quarter* ruler.

Step 7: Loosen the glue under *Sec. 1*, then press the fabric pieces open on the backside of each paper.



Step 8: Position the fold template over the top of *Sections 1 and 2*, lining the edge up with *Line 2*. Fold the paper back and tear the paper along the stitches on *Line 1*. Stop tearing when you hit the fold template.

