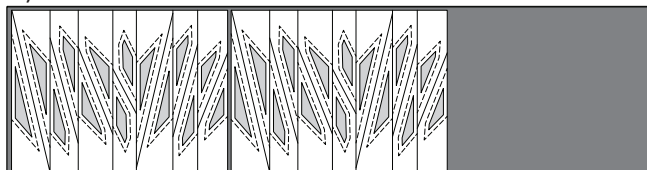


► **Fabric AA2: Units AA1 & AA2 (TLS #2)**

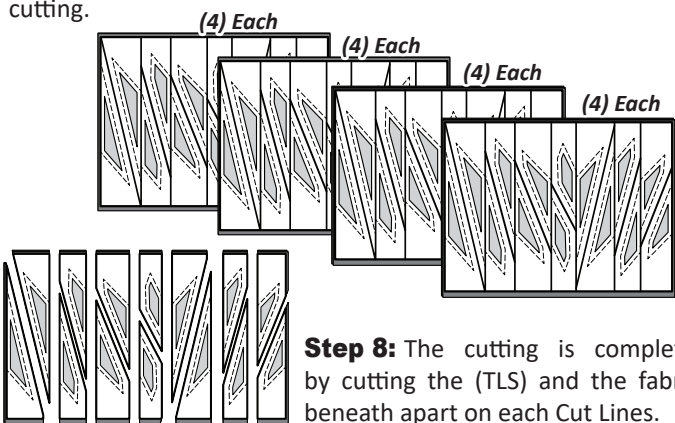
Step 5: Cut (8) 11" x 42" strips from Fabric AA2. Open and re-stack the strips facing *right-side up* into (2) stack of four strips.



Step 6: Position (2) *Unit AA1 & AA2 Template Layout Sheet #2* on each stack as shown. Cut (16) pieces matching the size of the (TLS).



Step 7: Position (4) pieces under each (TLS). Paper clips are used to clip each Temp Sec. onto the fabric beneath before you begin cutting.

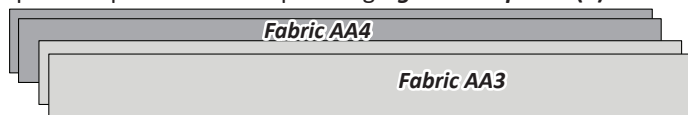


Step 8: The cutting is completed by cutting the (TLS) and the fabrics beneath apart on each Cut Lines.

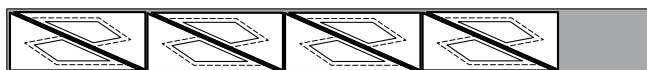
- Place the section pieces for Unit AA1 into Bag #AA1.
- Place the section pieces for Unit AA2 into Bag #AA2.

► **Fabric AA3 & AA4: (Temp AA2-8)**

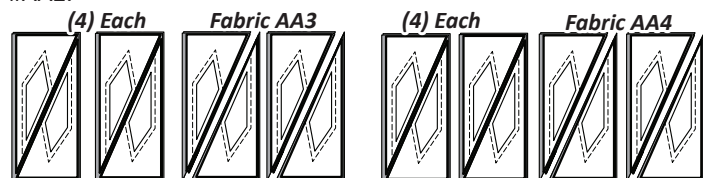
Step 9: Cut (2) 4" x 42" strips from each Fabric AA3 and AA4. Open and position the strips facing *right-side up* into (1) stack.



Step 10: *Unit AA2, Template AA2-8* is used to cut (8) pieces, matching the size of the Template from each fabric. [Each strip yields (4) pieces and the Template is reused in this process.]

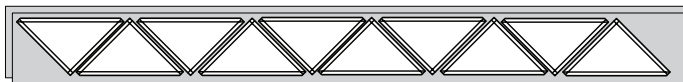


Step 11: Place (4) pieces cut from each fabric under one template. Cut the (TLS) and the fabrics beneath apart on Cut Line 1 to yield (16) pieces from each color. Place these pieces into Bag #AA2.

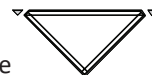


► **Fabric AA5: (T-Temp AA-1)**

Step 12: Cut (2) 4-1/2" x 42" strips from Fabric AA5. Open and re-stack the strips facing *right-side up* into one stack.



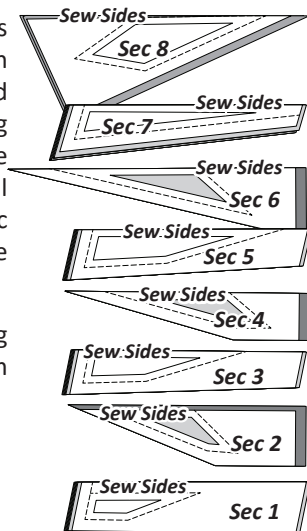
Step 13: *T-Template AA-1* is used to cut (16) triangles. You only need to cut (6) from the 2nd strip.



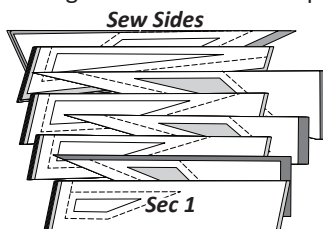
Step 14: Smart Corners have been added to the templates which requires additional trimming on both ends. Place these pieces into Bag #AA2.

■ **SORTING & STACKING: UNIT AA2 BAG #AA2**

Graphics and detailed instructions are provided for Unit AA2 as it has an extra step that needs to be explained to add Sec. 8. Sort the pieces in Bag #AA2 on your table, arranging the section #s for each unit in numerical order with the templates and fabric pieces facing *right-side-up*. Align the sew-sides at the top.

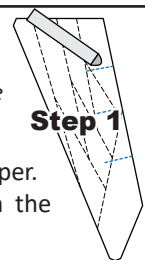


The pieces are then stacked beginning with the largest Sec. # on the bottom finishing with Sec. 1 on the top.



■ **PAPER PIECING: UNIT AA2**

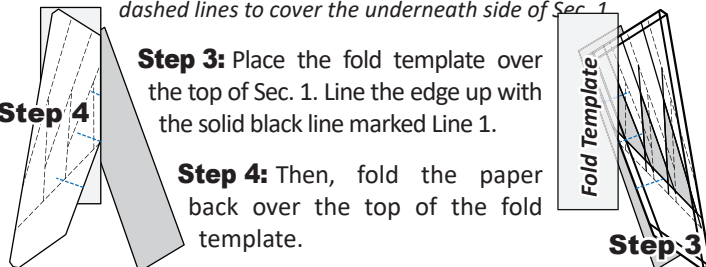
NOTE - Tracing the Dashed Lines: Place the foundation paper onto a light table. Flip the foundation paper over and trace the dashed lines printed on the front side of the foundation paper, onto the backside of the paper.



Step 1: Find Sec. 1 on the foundation paper. Place a small amount of fabric glue on the *backside* of the paper under Sec. 1.

Step 2: Position the first piece of fabric for Sec. 1 *wrong-side-up* on your table. Lift the foundation paper, slide the fabric under Sec. 1 and glue the fabric to the backside of the paper. Steps 2 and 3 are repeated for each foundation unit before moving onto Step 4.

NOTE - Fabric Placement: The *wrong-side* of the fabric is against the backside of the paper. The fabric must extend beyond the edges of the dashed lines to cover the underneath side of Sec. 1.



Step 3: Place the fold template over the top of Sec. 1. Line the edge up with the solid black line marked Line 1.

Step 4: Then, fold the paper back over the top of the fold template.

Step 3