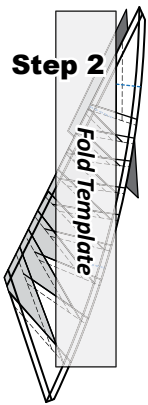
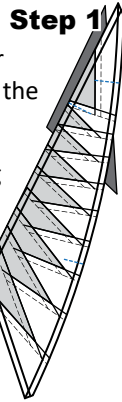


**Step 1:** The first piece of fabric is placed *wrong-side-up* on your table. Lift the foundation paper, slide the fabric under Sec. 1. Glue is used to adhere the fabric to the backside of the paper. Repeat Steps 1 and 2 for each foundation unit.



**Step 2:** Place the fold template over the top of Sec. 1. Line the edge up with the solid black line marked *Line 1*.

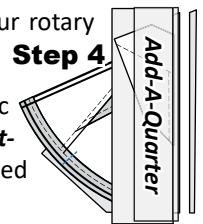
Continue with the paper piecing repeating the previous steps laid out for Unit D1R. After the paper piecing and curved piecing are completed, sew the (TRP) Lines and complete the trimming as explained previously.



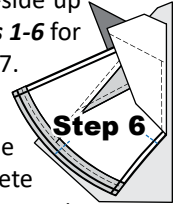
the folded paper and trim the fabric with your rotary cutter.



**Step 5:** Place the fabric piece for Sec. 2, *right-side up* next to the folded back paper.

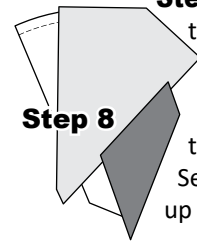


**Step 6:** Lift the paper, and slide the fabric under Sec. 1, line the sew-side up with the trimmed seam allowance. Repeat Steps 1-6 for each foundation paper before moving onto Step 7.



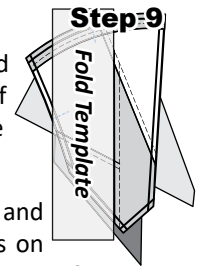
**Step 7:** Open the paper and sew on Line 1. The stitches should start and stop about 1/8" past the beginning and the end of each stitch line. Complete the sewing on each unit before moving onto the next step.

**Step 8:** Loosen the glue under Sec. 1, then press the fabric pieces open on the backside of each paper.



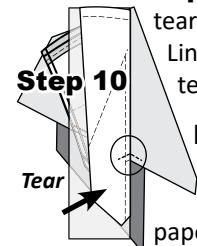
**Step 8**

**Step 9:** Position the fold template over the top of Sections 1 and 2, lining the edge up with Line 2.



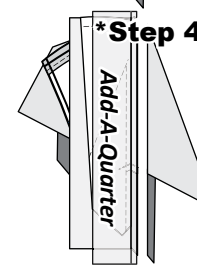
**Step 9**

**Step 10:** Fold the paper back and tear the paper along the stitches on Line 1. Stop tearing when you hit the fold template.

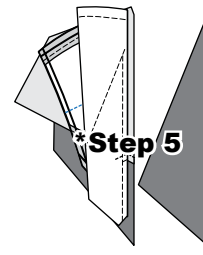


**Step 10**

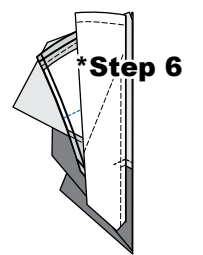
**Repeat Steps 2-9:** Trim the fabric with the *Add-A-Quarter* ruler, position the third fabric piece *right-side up* next to the paper. Lift the paper and slide the fabric under Sec. 3.



**\*Step 4**

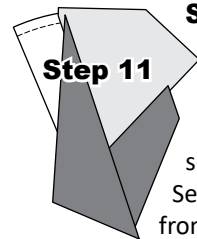


**\*Step 5**



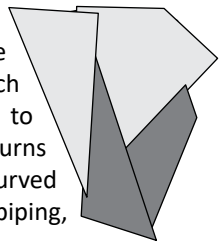
**\*Step 6**

**Step 11:** Open the paper, sew on Line 2, and press.



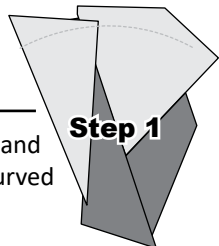
**Step 11**

Continue adding the template pieces to each section. When you get to Section 5, the paper piecing turns from straight line piecing to curved line piecing, when adding the piping, which is very fun and unique.



## CURVED PAPER PIECING: UNIT D2

**Step 1:** Set your stitch length at about 2.8 and on Unit D2, sew a basing stitch on the curved dashed line marked *Basting Stitch Line 4*.

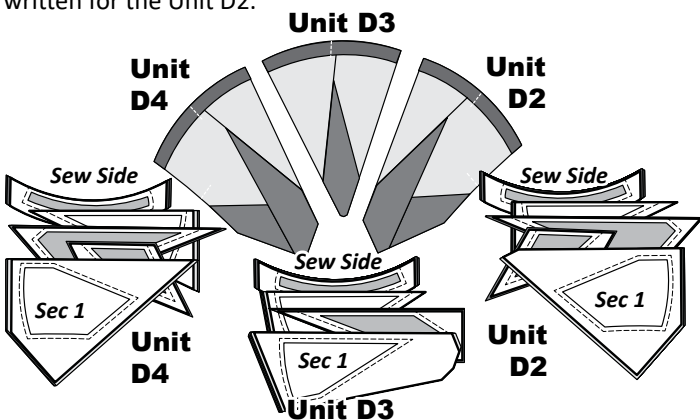


**Step 1**

## STACKING AND PAPER PIECING: UNITS

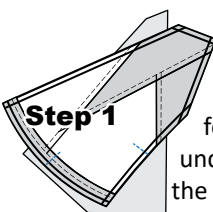
Position the templates and fabric pieces in numerical order for each unit facing *right-side up*, with the *sew-sides* aligned at the top.

Stacking: The stacking process begins with the largest Sec. # on the bottom of each stack. The pieces are stacked in reverse order finishing with Sec. 1 on top. The paper piecing instructions are written for the Unit D2.



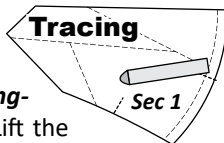
## FOUNDATION PAPER PIECING: UNIT D2

**NOTE - Tracing the Dashed Lines: Optional**



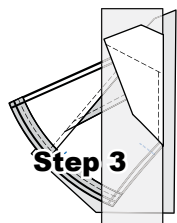
**Step 1**

**Step 1:** The first piece of fabric is placed *wrong-side-up* on your table. Lift the foundation paper, slide the fabric under Sec. 1. Glue is used to adhere the fabric to the backside of the paper. Repeat *Step 1* for each foundation paper.



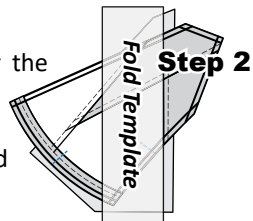
**Tracing**

**Step 2:** Place the fold template over the top of Sec. 1. Line the edge up with the solid black line marked *Line 1*.



**Step 3**

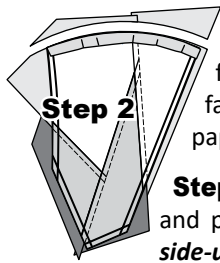
**Step 3:** Fold the paper back over the top of the fold template.



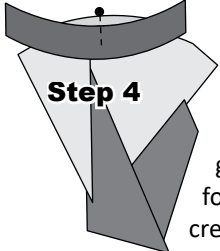
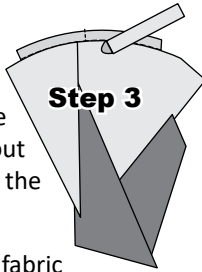
**Step 2**

**Step 4:** Place the *Add-A-Quarter* ruler next to

**Step 2:** Fold the paper back along the edge of the **Basting Stitch Line 4** as shown. Note: you may need to tear the paper a bit at the (TRP) Line before folding the paper back. Trim off the excess fabric along the curved edge of the folded back paper as shown.

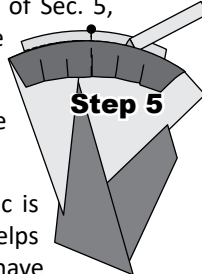


**Step 3:** Flip the paper over and position each unit **fabric-side-up**. Then, use your glue pen and run a small line of glue (about 1/8" wide) on the fabric following the edge of the **Basting Stitch Line**.



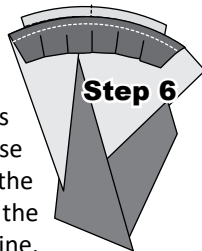
**Step 4:** Position the fabric strip for **Sec. 5**, facing **wrong-side-up**. Weave a pin through the center of the paper. The **TRP Line** on the paper side can be your guide. To find the center of **Sec. 5**, fold it in half and put a little crease in the piping.

**Step 5:** Glue the edge of the piping along the Basting Stitches.



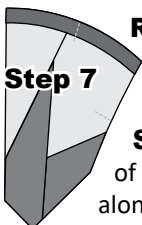
**Step 6:** Once the strip is in place, the fabric is pressed with steam along the edges. This helps flatten the fabric along the seam area. We have provided you with two different sewing options on how to complete the curved piecing. For accuracy I normally choose Option 1.

**Option 1:** The paper is flipped over so you are sewing, paper-side-up, and a curved seam is completed by stitching on **Sew Line 5**. If you use choose **Option 1**, be a little cautious about how you handle your paper, otherwise you may end up with tiny puckers. To avoid the pucker, hold the paper just off the surface of the sewing machine when stitching on the sew line. This allows the fabric to feed evenly between the presser foot and the feed dogs. Flip the paper over, check your seam to make sure you did not sew any puckers into the curve seam. If it looks good, press the fabric open to cover **Sec. 5** on your paper.



**Option 2:** The curved seam is completed when stitching a 1/4" seam allowance, by lining the edge of your quarter-inch foot up with the basting line. (Fabric-Side-Up). This technique is very much the same as sewing a normal curved seam. After the seam is sewn, flip the paper over and check for accuracy. Your stitching line should match up with the sew line labeled as **Sew Line 5** on the front side of the foundation paper.

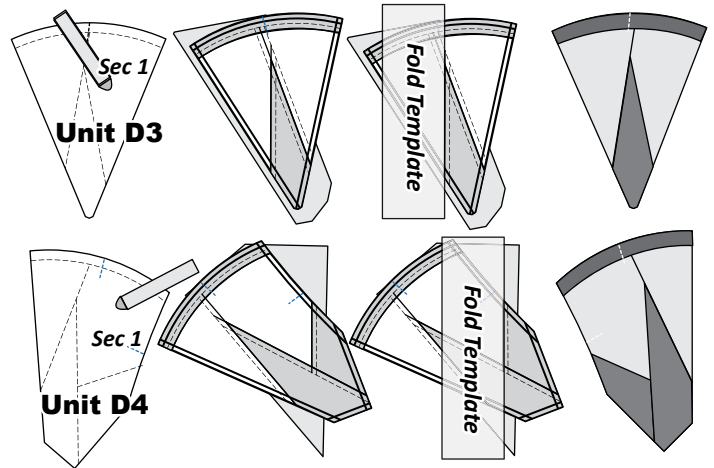
**Registration Lines (TRP):** Before for you complete the final trimming, you need to sew the (TRP) lines using a 2.8 stitch length.



**Step 7:** Trim the excess fabric off around the edge of the paper, on the exterior line. Don't forget to trim along the curved edge!

## FOUNDATION PAPER PIECING: UNITS D3 AND D4, BAG #D2

**Units D3 & D4:** A few steps to get you started with the paper piecing are provided below for Units D3 & D4.



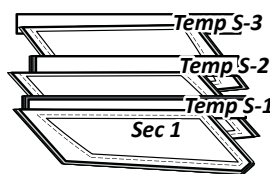
**Step 1:** After the paper piecing is completed, sew the (TRP) Lines and complete the trimming.

## STACKING: UNITS D5L-D7L, D5R-D7R, BAG #D4

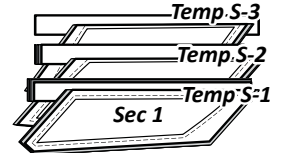
**Stacked Graphics:** The stacking graphics are located below for each Unit.. Sort the pieces for each **Unit D5L-D7L** and **D5R-D7R** in numerical order. Position the templates and fabric pieces facing **right-side-up**, with the **sew-sides** aligned at the top.

**Stacking:** The stacking process begins with the last section on the bottom of each stack. The pieces are then stacked in reverse order finishing with **Sec. 1** on top as shown. Each group of template is now clipped to their associated Foundation Units.

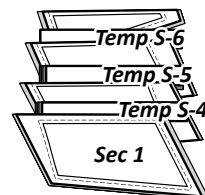
**Unit D5L**



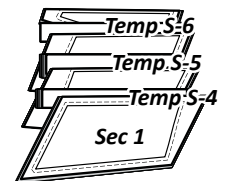
**Unit D5R**



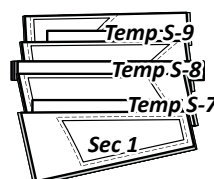
**Unit D6L**



**Unit D6R**



**Unit D7L**



**Unit D7R**

