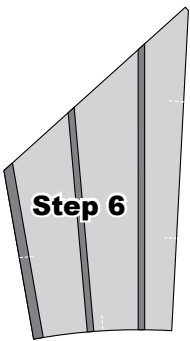
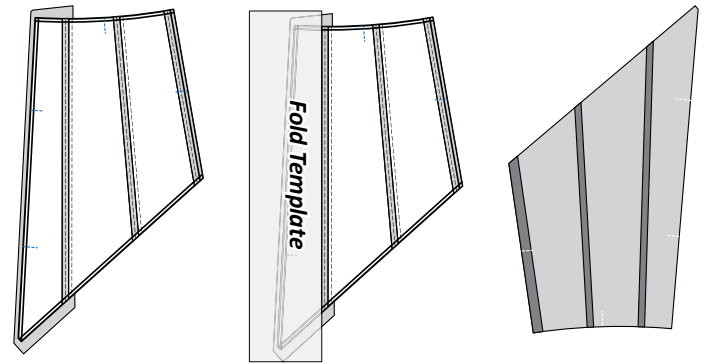
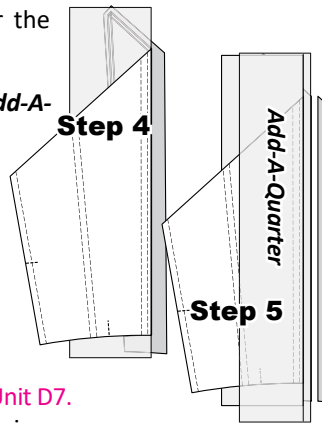


**Step 4:** Fold the paper back over the top of the fold template.

**Step 5:** Trim the fabric with the *Add-A-Quarter* ruler.



**Step 6:** Continue with the paper piecing repeating the previous steps laid out for **Unit D7**. After the paper piecing and curved piecing are completed, sew the (TRP) Lines and complete the trimming as explained previously in **Step 13, Unit D1**.

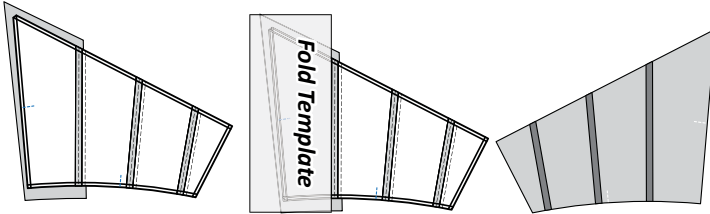


► **Unit D12:**

**Step 1:** After the paper piecing is completed, sew the (TRP) Lines and complete the trimming. (Graphics above.) *top of next column.*

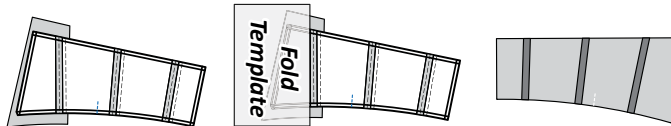
► **Unit D8:**

**Step 1:** After the paper piecing is completed, sew the (TRP) Lines and complete the trimming.



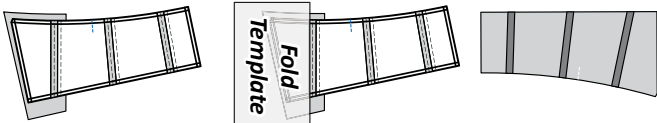
► **Unit D9:**

**Step 1:** After the paper piecing is completed, sew the (TRP) Lines and complete the trimming.



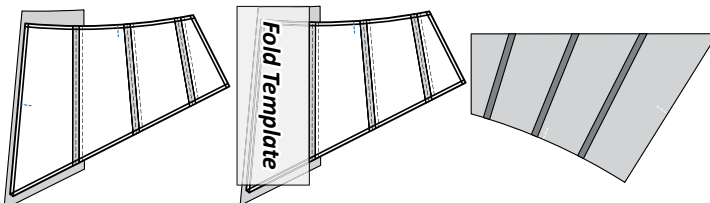
► **Unit D10:**

**Step 1:** After the paper piecing is completed, sew the (TRP) Lines and complete the trimming.



► **Unit D11:**

**Step 1:** After the paper piecing is completed, sew the (TRP) Lines and complete the trimming.



**ASSEMBLE THE UNITS**

**Illustration 1:** Arrange the blocks on your design wall as shown in Illustration 1. Remove the foundation papers from all Units D1, through D12.

**Illustration 2:** Join the following units working left to right across your design wall.

- Join (4) each Unit D12 with Unit D11. Press the seams toward Unit D12.
- Join (4) each Unit D8 with D7. Press the seams toward Unit D8.
- Join (4) each Unit D6 with D5. Press the seams toward Unit D6.
- Join (4) each Unit D2 with D1. Press the seams toward Unit D2.

**Illustration 3:** Curved piecing is required to sew the seams noted. Reference the curved piecing instructions on Page 22. Join the following pieces working left to right across your design wall.

- Join (4) each Units D6/D5 with **T-Temp D1R**. Press the seams toward **T-Temp D1R**.
- Join (4) each Unit D4 with **T-Temp D2R**. Press the seams toward **T-Temp D2R**.
- Join (4) each Unit D3 with **T-Temp D2L**. Press the seams toward **T-Temp D2L**.
- Join (4) each Units D2/D1 with **T-Temp D1L**. Press the seams toward **T-Temp D1L**.

**Illustration 4:** Curved piecing is required to sew the seams noted. Join the following pieces working left to right across your design wall.

- Join (4) each Units D12/D11 with Units D6/D5. Press the seams toward Units D12/D11.
- Join (4) each Unit D10 with Unit D4. Press the seams toward Unit D10.
- Join (4) each Unit D9 with Unit D3. Press the seams toward Unit D9.
- Join (4) each Units D8/D7 with Units D2/D1. Press the seams toward Units D8/D7.

► **Finishing the Block**

To avoid Y-seams in the assembly process, the remaining groups are not joined until later.