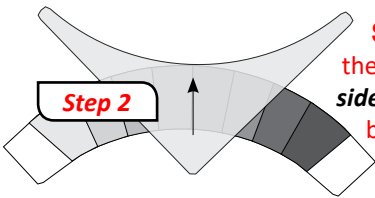
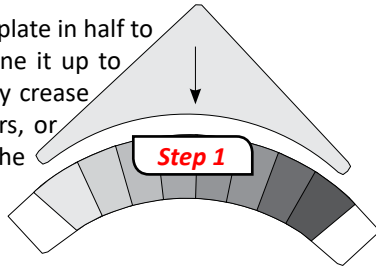


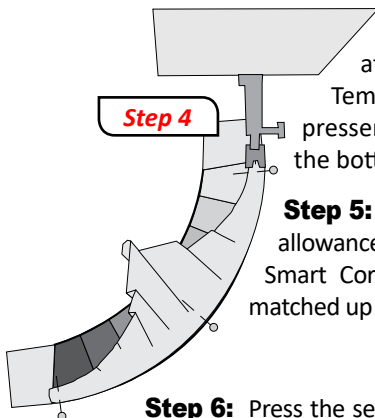
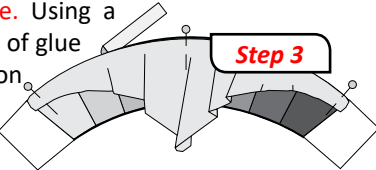
## ► Part 2: Curved Piecing Unit Block 2

**Step 1:** Fold the Center Template in half to find the center point, then line it up to Sew Line 1, on the arc. Lightly crease the fabric to mark the centers, or mark it with a pencil using the holes in the Creative Grids Templates.



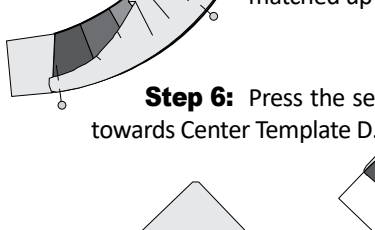
**Step 2:** Position Unit B and the Center Template with **right-sides-together**. Unit B on the bottom Center Template on top. Match and pin the centers together on both pieces.

**Step 3:** Match the ends of the center Template to the marked edge of Unit B on each side with two additional pins. Smart Corners are there as a guide. Using a glue pen, dab a small amount of glue along the raw edge of the melon piece. Quickly shape, and match the edges of both pieces together.

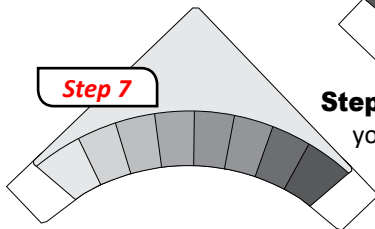


**Step 4:** Position the pieces at your machine with the Center Templates on top, next to the presser foot. This leaves the Arcs on the bottom next to the feed dogs.

**Step 5:** Check the width of the seam allowance! It should measure 1/4". With Smart Corners, your pieces should have matched up perfectly!



**Step 6:** Press the seam towards Center Template D.

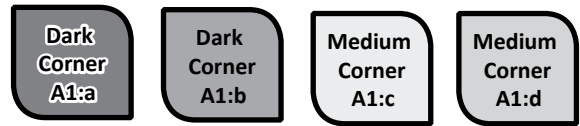


**Step 7:** For the 87" by 100" layout, you will need to complete (49) Unit Block 2. If you are not making the 87" x 100" quilt, check the Unit Block Chart below for the number of Unit Block 2 needed for your quilt.

below for the number of Unit Block 2 needed for your quilt.

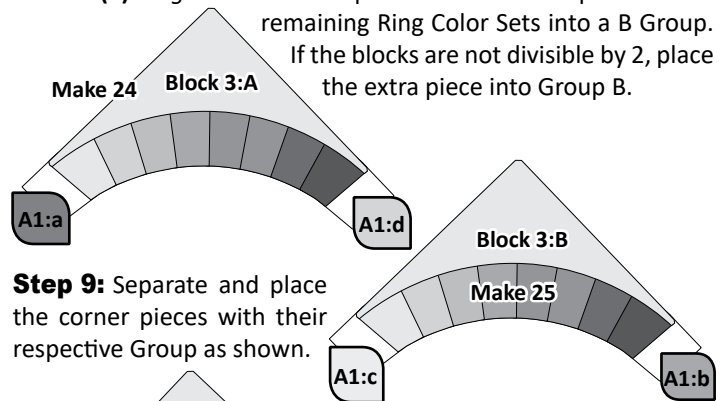
## ► CHOOSING THE CORNER FABRICS

A **four-patch** is created at the intersection where the (4) rings are joined. I generally use (4) colors, to build the **four-patches**. The four corner fabrics were cut from the medium and dark accent fabrics listed in the yardage requirements in Chapter 1.

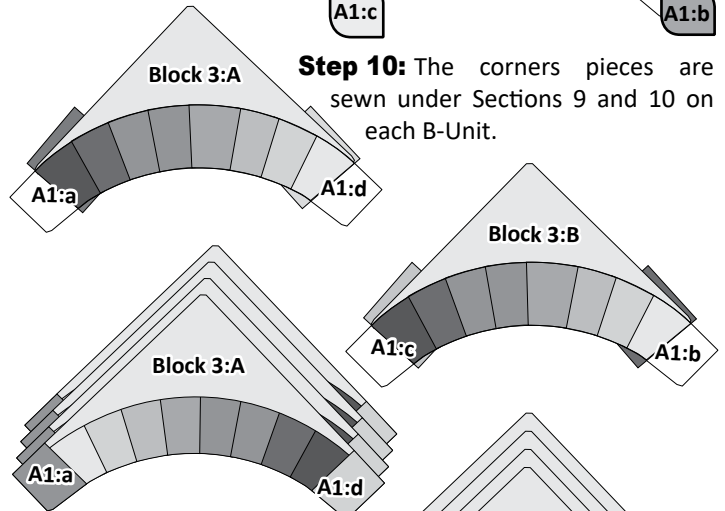


## ► Part 3: Corner Blocks 3:A & 3:B

**Step 8:** The Unit Block 2 pieces are divided into (2) equal stacks. Choose (3) Ring Color Sets and place into an A Group. Place the remaining Ring Color Sets into a B Group. If the blocks are not divisible by 2, place the extra piece into Group B.



**Step 9:** Separate and place the corner pieces with their respective Group as shown.



**Step 10:** The corners pieces are sewn under Sections 9 and 10 on each B-Unit.

**Step 11:** The corner pieces are pressed, then the excess fabric is trimmed off around each corner. Trim the Smart Corners.

**Step 12:** Remove the foundation paper from the **backside** of each unit.

**Step 13:** Refer to Line 4 on the chart below for the correct number of pieces to make for your quilt. Keep the blocks in each group separated.

Wedding Ring Unit Block Chart: Make the Number of Blocks Noted					
Line 1	Number of Rings	4 by 5	5 by 5	5 by 6	6 by 6
Line 2	Quilt Size	87" x 100"	100" x 100"	100" x 112"	112" x 112"
Line 3	Unit Blocks: 1 & 2	49	60	71	84
Line 4	Unit Blocks: 3:A & 3:B	(24) 3:A (25) 3:B	30 each	(35) 3:A (36) 3:B	42 each