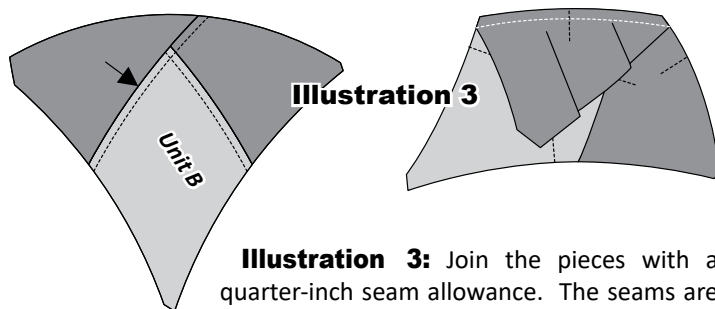


popular. So pick your stitch. Play around a bit on your machine. Once you find the stitch you want, play around with the length and width. When you are happy, then you can begin the appliqué process.

**General Machine Settings for Invisible Appliqué:**

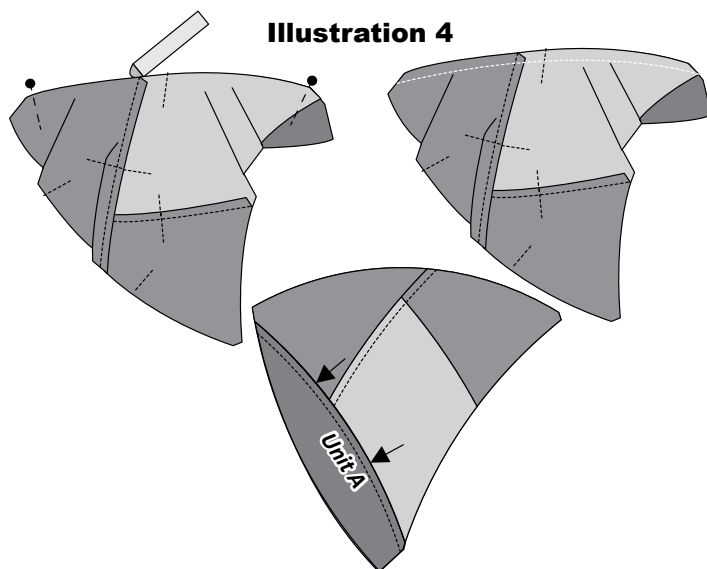
Blanket Stitch: Width (.07-1.2) Length, (1.7-2.1)  
Zigzag: Width (.05-.09) Length, (1.3-1.5)

3. **Appliqué Foot:** An Open Toe Embroidery Foot is the most common foot used for Machine Appliqué.
4. **Object Placement:** When you begin stitching, the needle position should be set so it jumps on and off the folded-edge of the appliqué pieces.



**Illustration 3:** Join the pieces with a quarter-inch seam allowance. The seams are pressed towards the B-Units.

**Illustration 4:** The B/C pieces are sewn onto Unit A. Match and pin the (TRP) lines. Match the smart corners, then glue both ends and the raw edges along the curve. Join the pieces with a quarter-inch seam allowance. The seams are pressed towards the A-Units.



**Illustration 4**

**Illustration 5:** Reference Illustration 5 for which T-Templates to add to the Unit A/B/C Sections. Match the smart corners, then glue both ends and the raw edges along the curve. Join the pieces with a quarter-inch seam allowance.

- T-Temp D-1 is sewn onto Group 1. The seams are pressed towards T-Temp D-1.
- T-Temp D-2 is sewn onto Group 2. The seams are pressed towards T-Temp D-2.
- T-Temp D-4/D-3 is sewn onto Group 3. The seams are pressed towards T-Temp D-4/D-3.

**Illustration 6:** Number the Block Groups 1 to 6 starting with Group 1 at the top, moving clockwise around your Block.

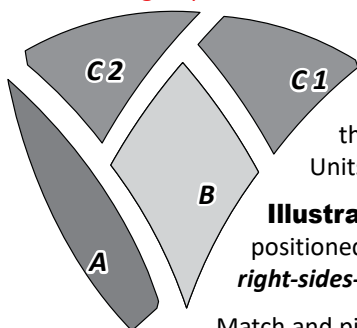
- Group 1 is sewn onto Group 2. Press towards Group 2.
- Group 2 is sewn onto Group 3. Press towards Group 3.
- Group 3 is sewn onto Group 4. Press towards Group 4.
- Group 4 is sewn onto Group 5. Press towards Group 5.
- Group 5 is sewn onto Group 6. Press towards Group 6.
- Group 6 is sewn onto Group 1. Press towards Group 1.

The appliqué circle templates are centered over the center hole and glued in place using Roxanne's' Baste-it glue around the edge of the turned-under seam allowance. Once the glue is dry, the circles are machine stitched onto the center of the Snowflake Blocks. Return to Page 17 for the appliqué instructions.

**Curved Piecing Assembly Steps**

Once you begin to assemble the Block Groups shown on Page 19 you will notice they are all identical and joined with curved seams. The curved piecing is the same throughout the piecing process for each block group. Illustrations related to each step are shown on

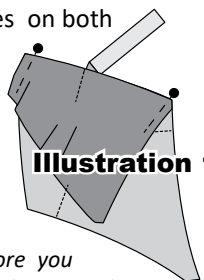
Page 19 and in the instructions below.



**Foundation Papers:** Remove the foundation papers from all Units A, B & C.

**Illustration 1:** The C1 pieces are positioned over the top of the B pieces with right-sides-together.

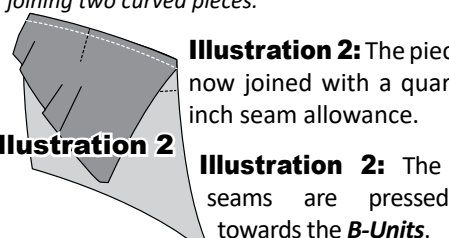
Match and pin the (TRP) lines on both Unit pieces. Glue the smart corners at both ends, then glue the raw edges along the curved edge to secure the pieces from moving in the sewing process. *TIPS: If the pieces are not fitting perfect, use a steam iron to shrink the raw edges until the edges fit perfect.*



**Illustration 1**

**NOTE - Tips:** Gluing the raw edges together before you sew a curved seam allows the fabrics to feed evenly between the presser foot and feed dogs as you sew.

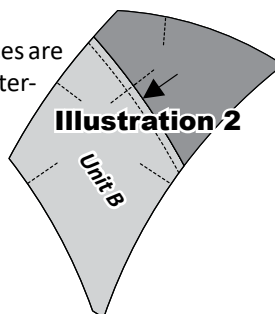
**NOTE - Tips:** Always sew with the convex edge on the bottom, near the feed dogs, and the concave edge on the top, near the presser foot, when joining two curved pieces.



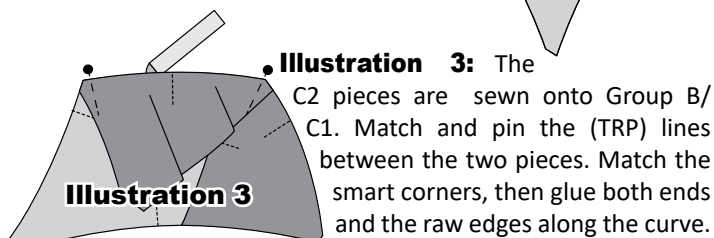
**Illustration 2**

**Illustration 2:** The pieces are now joined with a quarter-inch seam allowance.

**Illustration 2:** The seams are pressed towards the B-Units.



**Illustration 2**



**Illustration 3**

**Illustration 3:** The C2 pieces are sewn onto Group B/C1. Match and pin the (TRP) lines between the two pieces. Match the smart corners, then glue both ends and the raw edges along the curve.