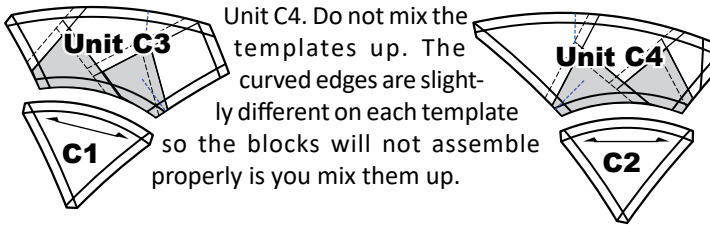


## Curved Piecing T-Template C1 & C2

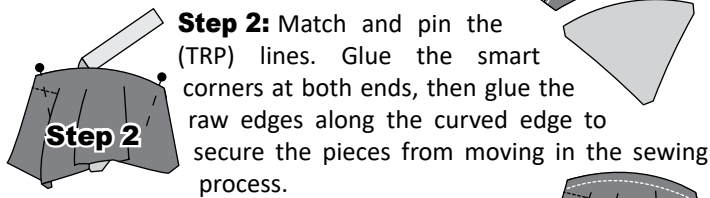
**Foundation Papers:** If you have not already done so, remove the foundation papers from both Unit C3 and C4.

**T-Template C1** is joined with Unit C3. **T-Template C2** is joined with

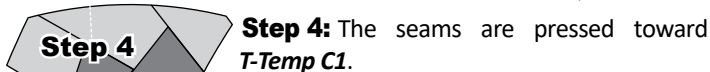


### ► Unit C3 and T-Template C1

**Step 1:** Position **Unit C3** over the top of **T-Temp C1** with *right-sides-together*.

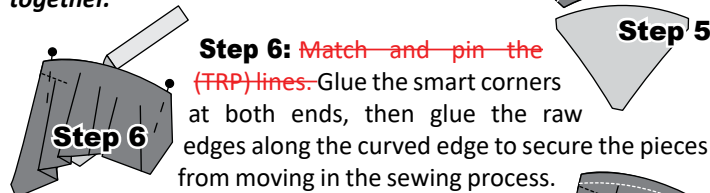


**Step 3:** The pieces are now joined with a quarter-inch seam allowance.

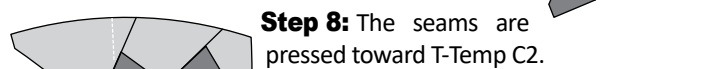


### ► Unit C4 and T-Template C2

**Step 5:** Position **Unit C4** over the top of **T-Temp C2** with *right-sides-together*.



**Step 7:** The pieces are now joined with a quarter-inch seam allowance.



**NOTE - Tips:** Gluing the raw edges together before you sew a curved seam allows the fabrics to feed evenly between the presser foot and feed dogs as you sew.

**NOTE - Tips:** Always sew with the convex edge on the bottom, near the feed dogs, and the concave edge on the top, near the presser foot, when joining two curved pieces.

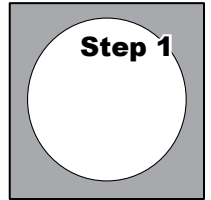
## Blank Border: T-Temps C-1 & C-2

**NOTE - T-Temp C-1 and C-2 Instructions:** These are included in the respective booklets. There is only cutting required for this option.

## Turn-Under Appliqué

In the Introduction booklet, there are (7) appliqué circles that have been perfectly cut with a laser out of an appliqué stabilizer product that Quiltworx uses called Stitch-N-Peel. Do not lose these circles as they are required for the center of each of your snowflakes. They are included in the Introduction booklet so they can be kept together on the sheet they have been cut from. To remove one from each set of (4), simply use your rotary cutter or a pair of scissors to clip the small tabs that are holding the circle in place. One 2-1/2" x 42" strip can make several center circles. So, if you want to cut them out of the same fabric, this is fine. Otherwise, you will need at least a 2-1/2" square for each center.

**Step 1:** Just prior to adhering the Circle onto your fabric, the shiny paper is removed from the backside of the circle. The sticky side of the template is placed against the wrong side of the 2-1/2" square cut for your circle.



**Step 2:** Trim the fabric around the outer edge of the circle, leaving about 3/16" of fabric for the turn-under on the backside.

**Step 3:** Using your glue pen, apply a small amount of glue on the backside of the fabric, around the edge of the circle.

**Step 4:** Use the flat end of your Purple Thang and gently fold and press the seam allowance over the edge of the circle, pressing the fabric into the glue on the backside of the stabilizer.

**Placement of the Circle:** After the glue has dried, the circle is glued over the hole in the center of each block.

## MACHINE APPLIQUÉ

The circle is sewn onto the Quilt by machine. The instructions in this booklet are for Machine Appliqué.

**NOTE - A Little Advice:** Generally, the smaller the thread, the smaller the needle, the smaller the stitch, the better it looks. But remember, that's following someone else's advice (in this case, mine) and is not always the right solution. If you are not comfortable going smaller, a larger stitch may be the right choice for you. Experiment a little on a different piece of fabric if you are new to Machine Appliqué until you have some confidence!

- 1. Selecting Thread:** I normally use the lighter weight threads, 60 weight and smaller. I have used cotton, polyester, rayon, and silk.

**NOTE - My Advice!:** Use what you like. We are lucky to have a lot of great options, so pick a thread and be happy. I normally match the thread color to the fabric. I generally use the same thread in the bobbin as I use on the top.

- 2. Stitches and Stitch Setting:** My appliqué is normally done with a very small zigzag or a very small blanket stitch. Decorative stitches are also becoming very