

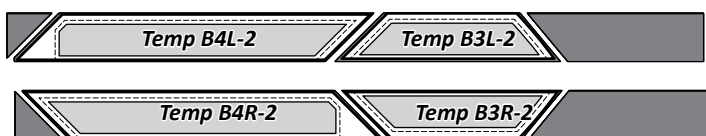
**Step 3:** Clip the similar pieces together, then place the corresponding template on top of each. Clip them together. Place the B4L pieces in Bag #B4L, the B3L pieces in Bag #B3L, the B4R pieces into Bag #B4R, and the B3R pieces into Bag #B3R.

► **Fabric B7 (Temp B4L-2, B3L-2, B4R-2, and B3R-2)**

**Step 1:** Cut (8) 3" by 42" strips from Fabric B7. Stack these into (2) stacks of (4), facing *right-side-up*.



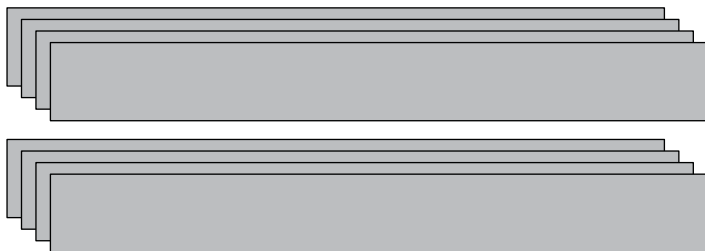
**Step 2:** Use the *Temp B4L-2, Temp B3L-2, Temp B4R-2, and B4R-2* as shown to cut (4) pieces the size and shape of each Template.



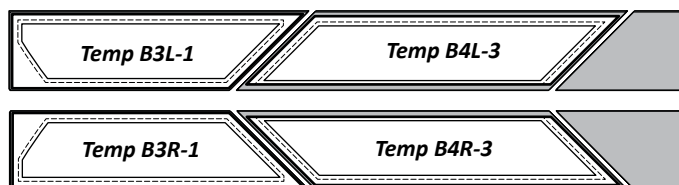
**Step 3:** Clip the similar pieces together, then place the corresponding template on top of each. Clip them together. Place the B4L pieces in Bag #B4L, the B3L pieces in Bag #B3L, the B4R pieces into Bag #B4R, and the B3R pieces into Bag #B3R.

► **Fabric B8 (Temp B4L-3, B3L-1, B4R-3, and B3R-1)**

**Step 1:** Cut (8) 5" by 42" strips from Fabric B8. Stack these into (2) stacks of (4), facing *right-side-up*.



**Step 2:** Use the *Temp B4L-3, Temp B3L-1, Temp B4R-3, and B4R-1* as shown to cut (4) pieces the size and shape of each Template.



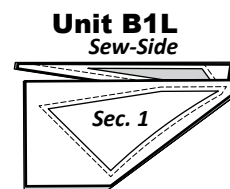
**Step 3:** Clip the similar pieces together, then place the corresponding template on top of each. Clip them together. Place the B4L pieces in Bag #B4L, the B3L pieces in Bag #B3L, the B4R pieces into Bag #B4R, and the B3R pieces into Bag #B3R.

**STACKING: UNIT B1L, BAG #B1L**

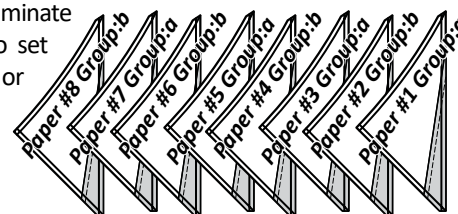
In the cutting instructions, I had you stack your fabrics in the proper sewing order before you cut. So now you need to stack your papers to match the cutting order of the fabrics.

Position the templates and fabric pieces in numerical order for each unit facing *right-side-up*, with the *sew-sides* aligned at the top. Sec. 1 does not have a sew side.

**Stacking:** The stacking process begins with the largest Sec. # on the bottom of each stack. The pieces are stacked in reverse order finishing with Sec. 1 on top. The paper piecing instructions are written for the Unit B1L.



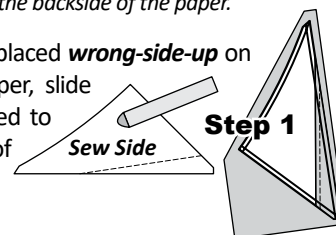
**Stacking your Foundation Papers:** Since you are working with two colorways in the same bag and stack of fabrics, it is best if you take the time to label your foundation papers. Our recommendation is to label the papers as #1 to #8 and also label them as Color Group :a or Color Group :b, alternating those labels and starting with Color Group :a on top. It is up to you whether you want to glue a small swatch in each section to the first Color Group :a paper and first Color Group :b paper as well. This will eliminate confusion if you have to set them aside for awhile or you forget where you are at in the sewing process.



**FOUNDATION PAPER PIECING: UNIT B1L**

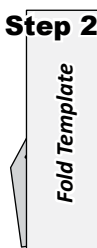
**NOTE - Tracing the Dashed Lines:** Place the foundation paper onto a light table. Flip the foundation paper over and trace the dashed lines printed on the front side of the foundation paper, onto the backside of the paper.

**Step 1:** The first piece of fabric is placed *wrong-side-up* on your table. Lift the foundation paper, slide the fabric under Sec. 1. Glue is used to adhere the fabric to the backside of the paper. Repeat Step 1 for each foundation paper.



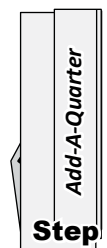
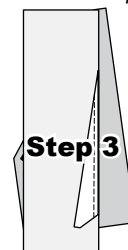
**NOTE - Fabric Order:** In each stack, you should have (4) fabrics cut from each a & b color group. When you start chain piecing make sure that Fabric B1:a is sewn to the first sheet of foundation paper labeled #1.

**Step 2:** Fabric B1:b is sewn to the second sheet labeled #2. Keep adding the fabric in the order shown in the stacking instructions.



**Step 2:** Place the fold template over the top of Sec. 1. Line the edge up with the solid black line marked Line 1.

**Step 3:** Fold the paper back over the top of the fold template.



**Step 4:** Place the *Add-A-Quarter* ruler next to the folded paper and trim the fabric with your rotary cutter.

**Step 5:** Place the fabric piece for Sec. 2, *right-side up* next to the folded back paper.

