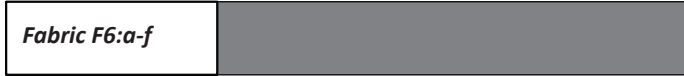


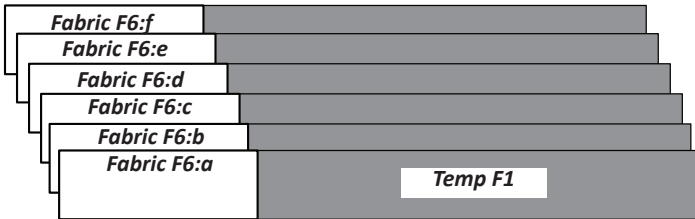
► Fabric F6: Units F4L-F6L & F4R-F6R Temp F1

One 4-1/2" by 42" strip is cut for each Fabric #. One piece is cut from each color.

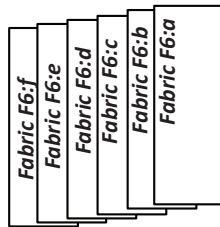


NOTE - Save Yardage: If you want to save a little fabric do a little math before you cut your strips. Quiltster assigns (1) strip to each Fabric #: a, b, c, d, e, & f. So if you are repeating the same fabric several times you may be able to cut back on the number of strips cut from each color.

Step 6: The strips are stacked facing **right-side-up**. Position **Temp F1** onto your stack cut (1) piece from each color.



Step 7: Label each template piece with its assigned Fabric #. Then place the into Bag #F2.

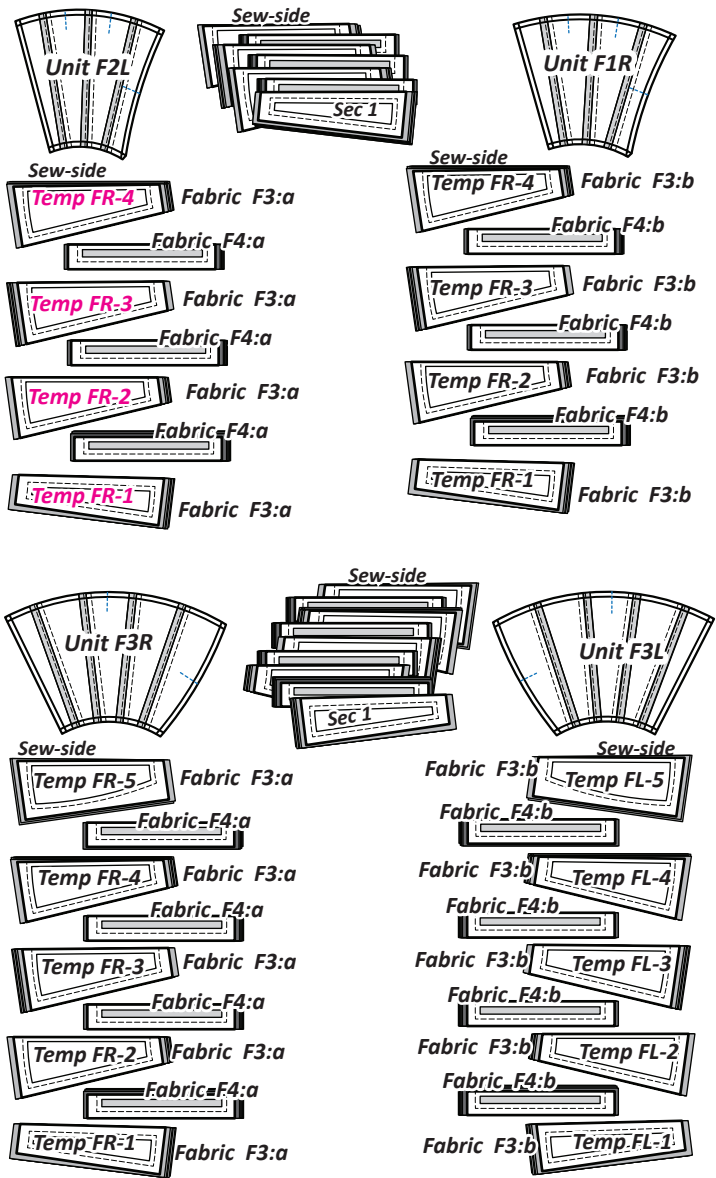
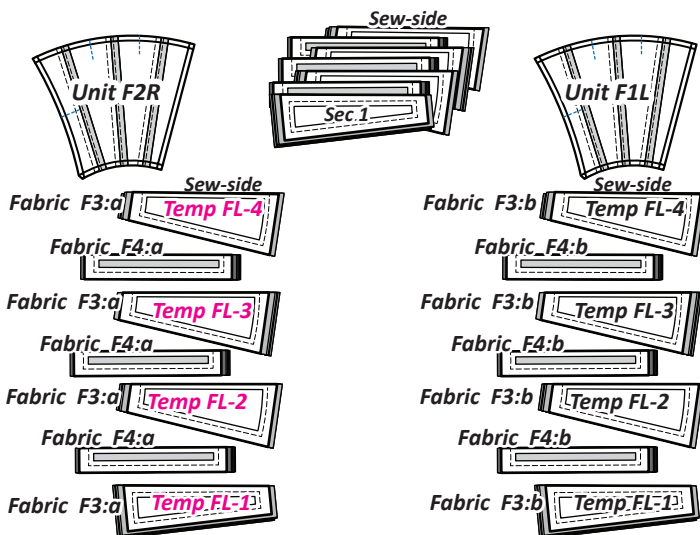


► Fabric F7:a & F7:b: Appliqué

You will find the instructions and Unit Chart for the Appliqué on Page 18.

STACKING: UNIT F1R- F3R & F1L- F3L

Organization: Arrange the templates and fabric pieces in the order shown for each Foundation Unit facing **right-side-up** with the **sew-side** aligned at the top. Stack the pieces as shown for each group.



FOUNDATION PAPER PIECING: UNITS F1-F3

NOTE - Tracing the Dashed Lines: Optional.

Step 1: Find Sec. 1 on the foundation paper. Place a small amount of fabric glue on the **backside** of the paper under Sec. 1.

Step 2: Position the first piece of fabric for Sec. 1 **wrong-side-up** on your table. Lift the foundation paper, slide the fabric under Sec. 1. The glue is used to adhere the fabric to the backside of the paper. Repeat Steps 1 and 2 for each foundation unit.

Step 3: Place the fold template over the top of Sec. 1. Line the edge up with the solid black line marked Line 1.

Step 4: Fold the paper back over the top of the fold template.