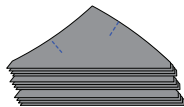
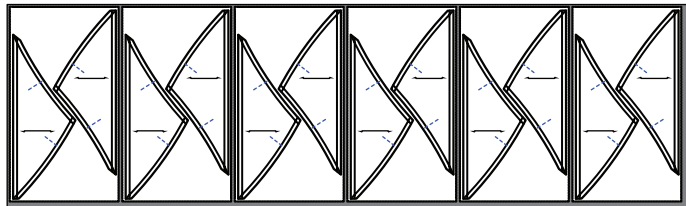


► **Fabric C11: T-Temp C4L Cutting Layout #11 (Referenced as C-Layout)**

The cutting for T-Temp C4L is identical to the cutting above for C4L.

**Step 1:** Sew the (TRP) Lines. After the threads are trimmed, the individual templates are cut out and placed in Bag #C5.

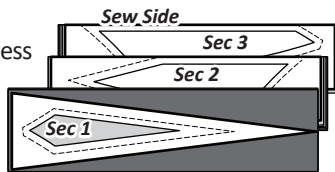


**STACKING: UNIT C1, UNIT BAG #C1**

**NOTE -** If you have cut from (2) or more colors, Fabric C1:a for each Sec.# will be on the top of each stack.

**Organization:** Stack the templates and fabric pieces in numerical order facing *right-side up*, with the *sew-sides* aligned at the top. Sec. 1 does not have a sew side.

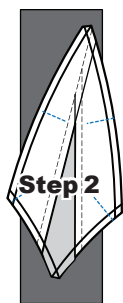
**Stacking:** The stacking process begins with the largest Sec. # on the bottom. The pieces are stacked in reverse order finishing with Sec. 1 on top.



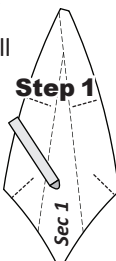
**FOUNDATION PAPER PIECING: UNIT C1**

**NOTE - Tracing the Dashed Lines:** Place the foundation paper onto a light table. Flip the foundation paper over and trace the dashed lines printed on the front side of the foundation paper, onto the backside of the paper.

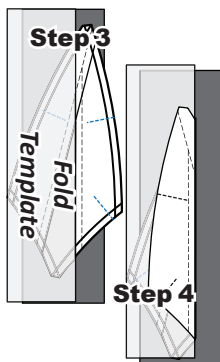
**Step 1:** Find Sec. 1 on the foundation paper. Place a small amount of fabric glue on the *backside* of the paper under Sec. 1.



**Step 2:** Position the first piece of fabric for Sec. 1 *wrong-side-up* on your table. Lift the foundation paper, slide the fabric under Sec. 1. The glue is used to adhere the fabric to the backside of the paper. Repeat Steps 1 and 2 for each foundation unit.

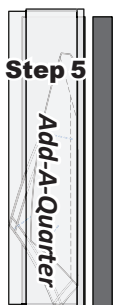


**Step 3:** Place the fold template over the top of Sec. 1. Line the edge up with the solid black line marked Line 1.

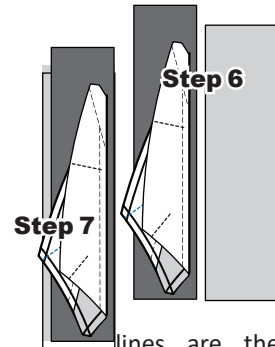


**Step 4:** Fold the paper back over the top of the fold template.

**Step 5:** Place the *Add-A-Quarter* ruler next to the folded back section lip-side down and trim the fabric with your rotary cutter. This leaves a quarter-inch seam allowance which is lined up with the sew side on the next piece of fabric.



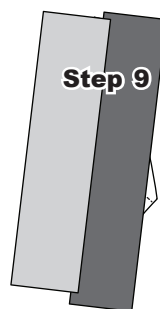
**Step 6:** Place the fabric piece for Sec. 2, *right-side up* next to the folded back paper as shown.



**Step 7:** Lift the foundation paper and slide the fabric under Sec. 2. Line the sew-side up with the trimmed seam allowance. Make sure the fabric extends beyond the boundaries of the dashed lines for Sec. 2. Repeat *Steps 3-7* for each foundation paper before moving onto Step 8.

**Step 8:** Sew on Line 1. [The sew lines are the solid lines] The stitches should start and stop about 1/8" past the beginning and the end of each sew line. Complete the sewing on each unit before moving onto the next step.

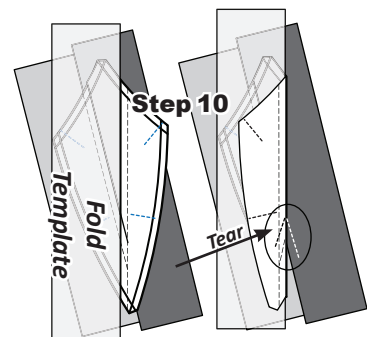
**NOTE - Trimming the Threads:** Sewing 4 to 5 stitches past the ends of your sew line makes it possible to cut the thread ends off each time you trim with your *Add-A-Quarter* ruler.



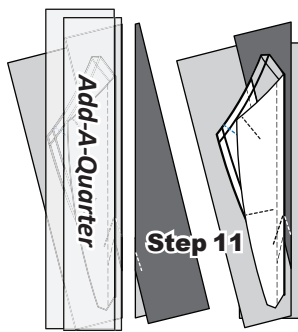
**Step 9:** Loosen the glue under Sec. 1, then press the fabric pieces open on the backside of each paper.

**Step 10:** Position the fold template over the top of Sections 1 and 2, lining the edge up with Line 2.

Fold the paper back and tear the paper along the stitches on Line 1. Stop tearing when you hit the fold template.

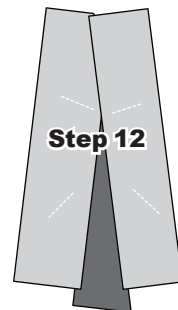


tearing when you hit the fold template.



**Step 11:** Trim the fabric with the *Add-A-Quarter* ruler, position the third fabric piece *right-side up* next to the paper and slide the fabric under Sec. 3.

**Step 12:** Open the paper, sew on Line 2 and press.



**Step 13:** When the piecing is complete, re-set your stitch length and sew the (TRP) Lines on each Foundation Unit. After the (TRP) Lines are sewn, the threads are trimmed on the front and backside of each unit, the excess fabric and paper is trimmed off on the exterior line around the perimeter of each unit. Place the finished units into Bag #C1.

