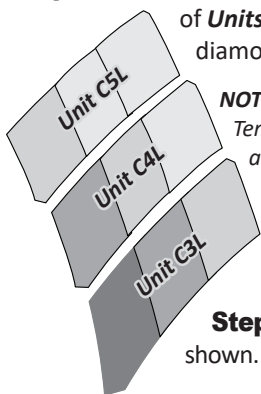


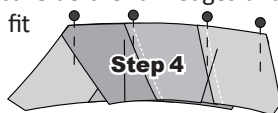
Step 2: Arrange the strips into the order shown below. One each of **Units C3L, C4L & C5L** are joined to complete (1) diamond.



NOTE - Making Corrections: Paper Piecing Templates Layout Sheet #12 includes (9) left and right traditional size templates for each diamond section. If you find you need to replace a color you can use these templates to cut out the required pieces to rebuild your diamond units.

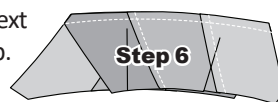
Step 3: The rows are assembled in the order shown.

Step 4: Position Unit C4L over the top of Unit C3L, the fabrics are facing **right-sides-together**. Match and pin each intersection where the sew lines intersect. Glue the raw edges and both ends where the Smart Corners fit before you sew the seam.

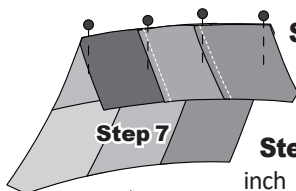


Step 5: Set your sewing machine to sew a quarter inch seam.

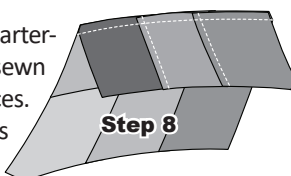
Step 6: Place Unit C3L on the bottom next to the feed dogs, leaving Unit C4L on top. After the sewing is completed the seam is pressed facing towards Unit C4L.



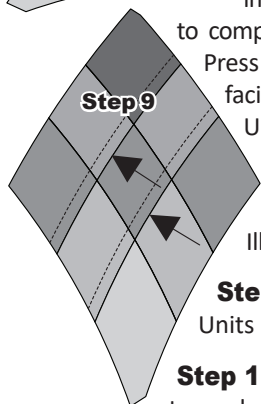
Step 7: Position Unit C5L on top of Unit C4L. Match and pin each intersection where the sew lines cross.



Step 8: A quarter-inch seam is sewn to complete your pieces. Press the seams facing towards Unit C5L.



Step 9: Repeat the sewing steps for Unit C3R-C5R. Pressing arrows are shown in Illustration 2.



Step 10: Remove the foundation papers on Units C1, C2L and C2R.

Step 11: Join Units C2L to Unit C1. Press towards Unit C1 as shown in Illustration 2.

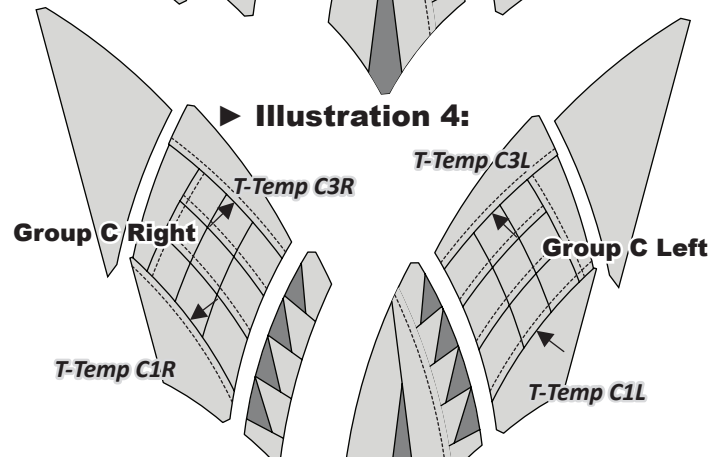
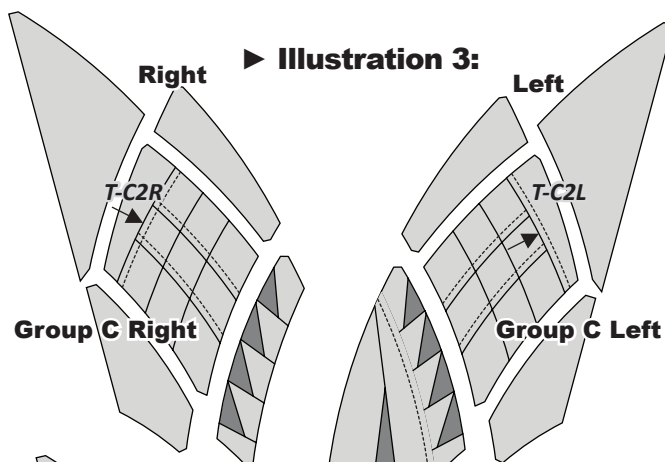
► **Illustration 3:**

Step 12: Join **T-Temp C2L** with the left diamonds. Press towards **T-Temp C2L**. Then join **T-Temp C2R** with the right diamonds. Press toward the diamonds.

► **Illustration 4:**

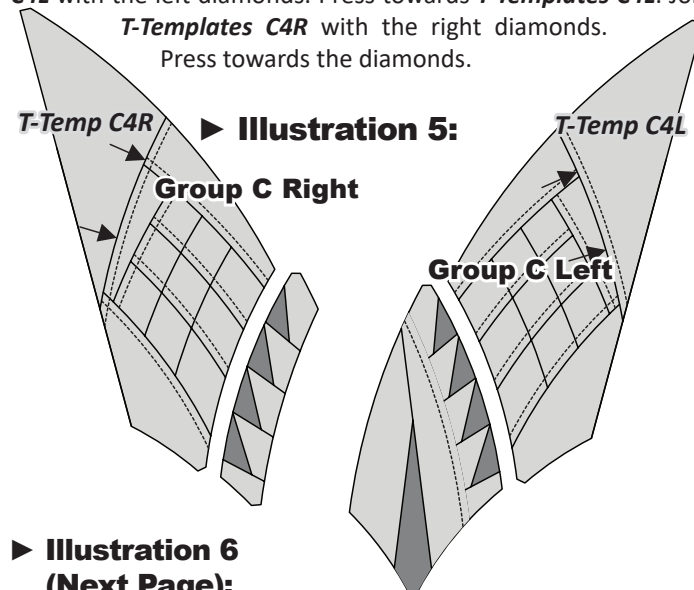
Step 13: Join **T-Templates C1L** with the left diamonds. Press towards the diamonds. Join **T-Template C3L** with the left diamonds. Press towards **T-Template C3L**.

Step 14: Join **T-Templates C1R** with the right diamonds. Press towards **T-Templates C1R**. Join **T-Template C3R** with the right diamonds. Press towards **T-Template C3R**.



► **Illustration 5:**

Step 15: Join **T-Templates C4L** with the left diamonds. Press towards **T-Templates C4L**. Join **T-Templates C4R** with the right diamonds. Press towards the diamonds.



► **Illustration 6 (Next Page):**

Step 16: Join Unit C2L with the left diamonds. Press towards Unit C2L. Join Unit C1R with the right diamonds. Press towards the diamonds.

► **Final Quilt Assembly Steps:**

Step 17: Reference LP 32 & 33 for the wall quilt assembly steps (see smaller graphics for 4 and 5 on Page 15) and LP 34 to 36 for Queen Assembly (Graphics 6 and 7 are shown on Page 15).

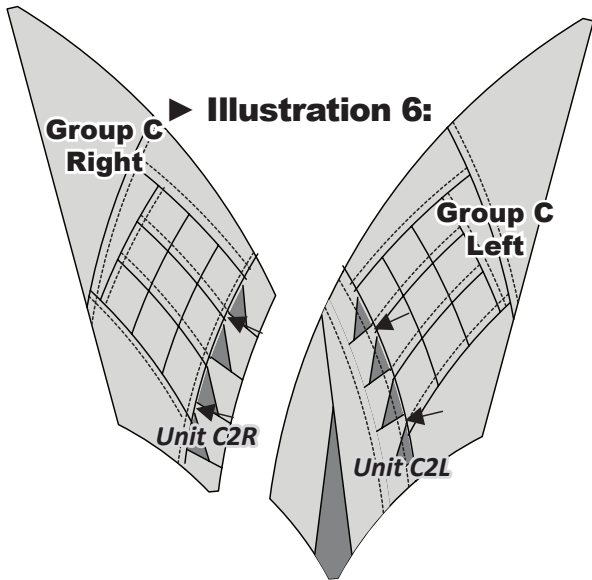
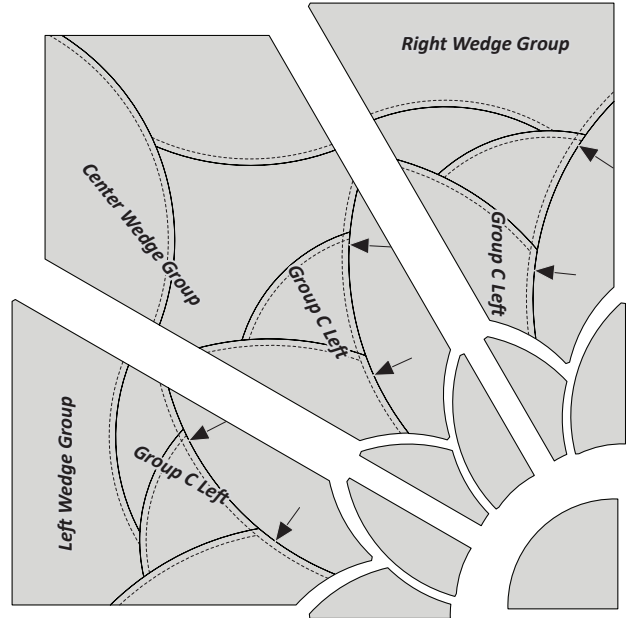


Illustration 6:

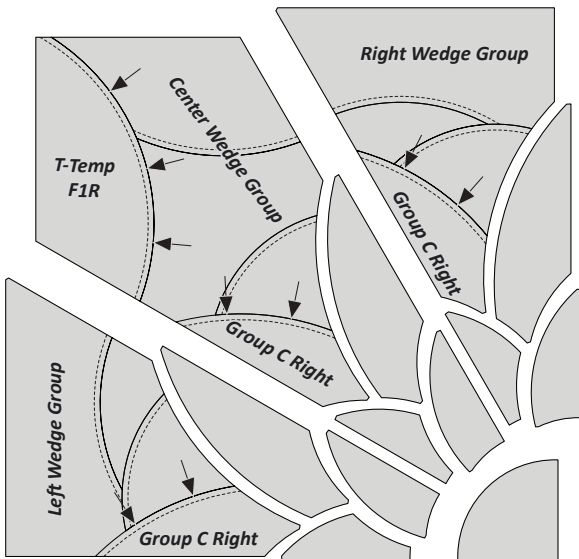
LP 32, Wall Assembly Graphic 5: Join the Block Groups.

- **Left Wedge:** Group C Left is joined with Left Group. Press seams to Left Wedge.
- **Center Wedge:** Group C Left is joined with Center Group. Press seams to Center Wedge.
- **Right Wedge:** Group C Left is joined with Right Group. Press seams to Right Wedge.



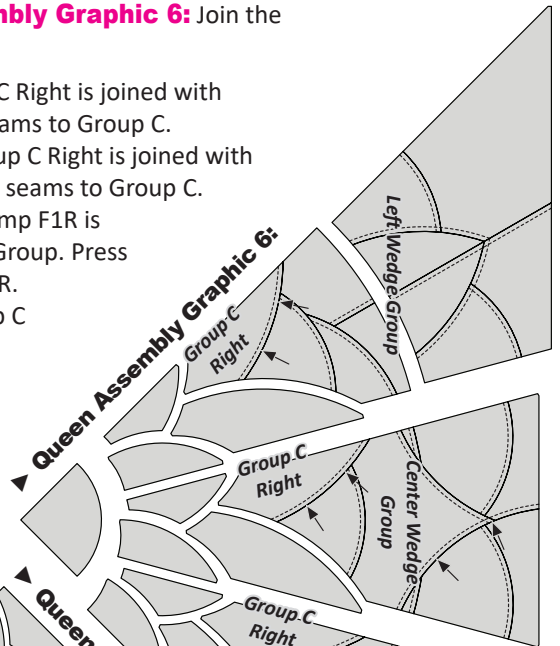
LP 32, Wall Assembly Graphic 4: Join the Block Groups.

- **Left Wedge:** Group C Right is joined with Left Group. Press seams to Group C.
- **Center Wedge:** Group C Right is joined with Center Group. Press seams to Group C. T-Temp F1R is joined with Center Group. Press seams to T-Temp F1R.
- **Right Wedge:** Group C Right is joined with Right Group. Press seams to Group C.



LP 35, Queen Assembly Graphic 6: Join the Block Groups.

- **Left Wedge:** Group C Right is joined with Left Group. Press seams to Group C.
- **Center Wedge:** Group C Right is joined with Center Group. Press seams to Group C.
- **Center Wedge:** T-Temp F1R is joined with Center Group. Press seams to T-Temp F1R.
- **Right Wedge:** Group C Right is joined with Right Group. Press seams to Group C.



LP 35, Queen Assembly Graphic 7: Join the Block Groups.

- **Left Wedge:** Group C Right is joined with Left Group. Press seams to Group C.
- **Center Wedge:** Group C Right is joined with Center Group. Press seams to Group C.
- **Center Wedge:** T-Temp F1R is joined with Center Group. Press seams to T-Temp F1R.
- **Right Wedge:** Group C Right is joined with Right Group. Press seams to Group C.

