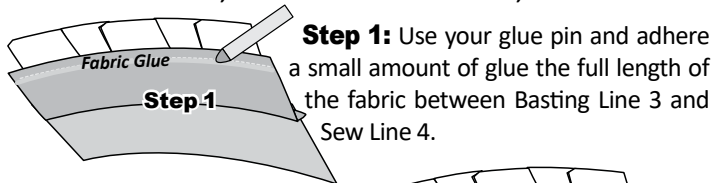


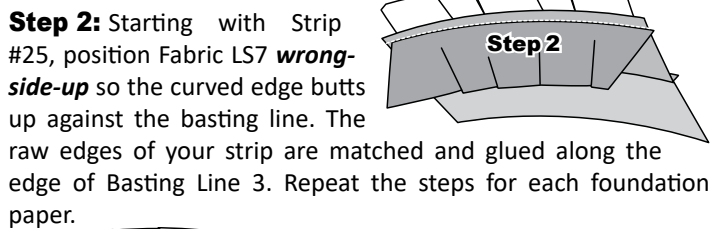
### ► Round 3: Temp CL-2, Fabric LS4-LS6

**Strips 1-8:** The Round 3 strips are used to complete the sewing for Sec. 3 on each of the Foundation Papers #1 through #12.

- Pair Fabric LS7, to Foundation Sheet C3L #1, Sec 3.
- Pair Fabric LS7, to Foundation Sheet C3L #2, Sec 3.
- Pair Fabric LS7, to Foundation Sheet C3L #3, Sec 3.
- Pair Fabric LS7, to Foundation Sheet C3L #4, Sec 3.
- Pair Fabric LS8, to Foundation Sheet C4L #5, Sec3.
- Pair Fabric LS8, to Foundation Sheet C4L #6, Sec3.
- Pair Fabric LS8, to Foundation Sheet C4L #7, Sec3.
- Pair Fabric LS8, to Foundation Sheet C4L #8, Sec 3.
- Pair Fabric LS9, to Foundation Sheet C5L #9, Sec 3.
- Pair Fabric LS9, to Foundation Sheet C5L #10, Sec 3.
- Pair Fabric LS9, to Foundation Sheet C5L #11, Sec 3.
- Pair Fabric LS9, to Foundation Sheet C5L #12, Sec 3.



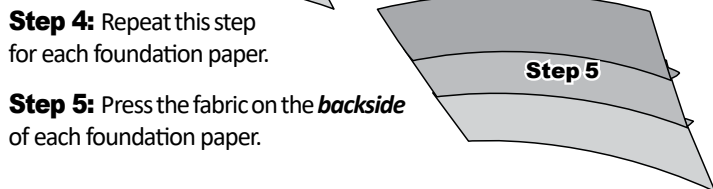
**Step 1:** Use your glue pin and adhere a small amount of glue the full length of the fabric between Basting Line 3 and Sew Line 4.



**Step 2:** Starting with Strip #25, position Fabric LS7 *wrong-side-up* so the curved edge butts up against the basting line. The raw edges of your strip are matched and glued along the edge of Basting Line 3. Repeat the steps for each foundation paper.



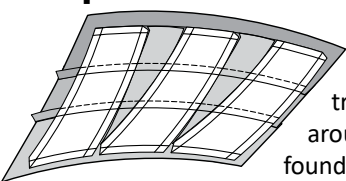
**Step 3:** Flip the papers *printed-side-up* at your sewing machine with the Sec.2 fabric next to the feed-dogs. Sew on Sew Line 3.



**Step 4:** Repeat this step for each foundation paper.

**Step 5:** Press the fabric on the *backside* of each foundation paper.

### ► Part 2: Trimming and Cutting the Papers



When the piecing is finished, the excess fabric and paper is trimmed off along the exterior line around the perimeter of each foundation sheet. Don't forget, you have a **Diamond Ruler** to help you through the trimming process.

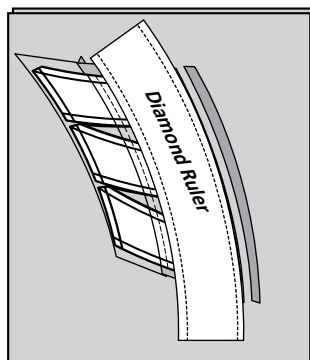
the trimming process.

#### Olfa Spinning Rotary Mat:

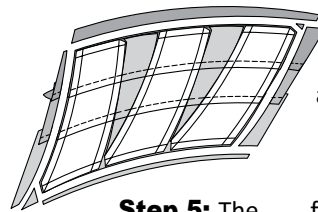
These units will be much easier to cut if you have a Rotary Spinning Mat.

**Step 1:** Place each unit one at a time on the center of the cutting mat with the *paper-side-up*.

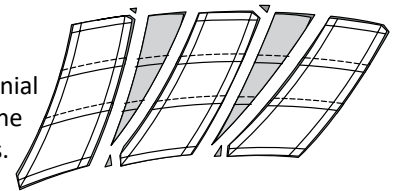
**Step 2:** The curved edges along the top and the bottom of each unit are the first lines trimmed.



**Step 3:** Trim the four smart corners on all four corners.



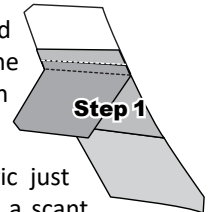
**Step 4:** Then the vertical lines on both sides and through the middle are trimmed.



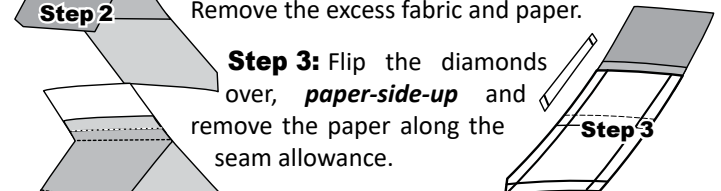
**Step 5:** The final trimming takes place on the remaining four Smart Corners.

### ► Part 3: Removing Foundation Papers and Trimming Basting Stitches

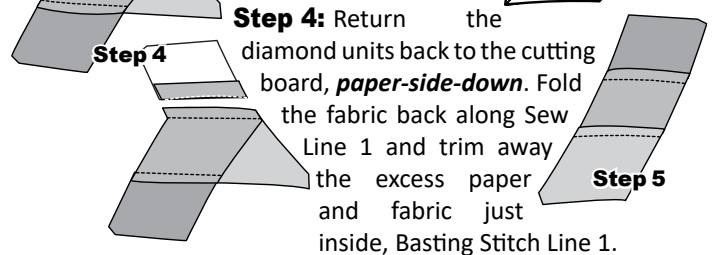
**Step 1:** Position the diamond paper pieced units on your table *paper-side-down*. Fold the Sec. 3 fabric back along **Sew Line 4**, so you can visually see the sewn basting stitches.



**Step 2:** Trim the paper and fabric just inside the **Basting Line 3**, leaving a scant quarter-inch seam allowance along **Sew Line 4**. Remove the excess fabric and paper.



**Step 3:** Flip the diamonds over, *paper-side-up* and remove the paper along the seam allowance.



**Step 4:** Return the diamond units back to the cutting board, *paper-side-down*. Fold the fabric back along Sew Line 1 and trim away the excess paper and fabric just inside, Basting Stitch Line 1.

**Step 5:** Lift the diamond pieces again and finish removing the paper under Sec. 1.

### ► Illustration 1: Design Wall Layout

**Step 1:** Arrange the Units and T-Templates as shown in Illustration 1, Page 13. You will have (12) block groups.

