

Amethyst

91" x 91" without the border. Adding the light blue border will increase the quilt to 100" x 100". A pieced border option is also available and can be added in Quiltster, where yardage can be obtained if desired.

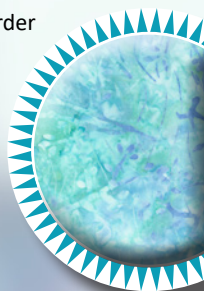
91" x 91"

without border
100" x 100" with border

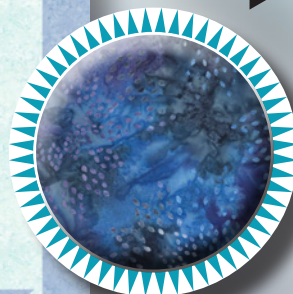
Shown with C1 border.



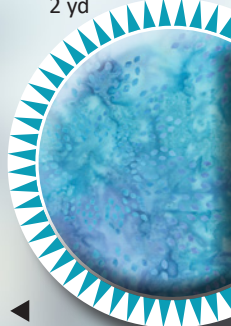
AC3:a, AC3:b, AC4:a,
AC4:b, AC6:c, AC7:a,
AC9:b, AL2, AL3
Tonga-B5054-Breeze
1 1/2 yd



AC7:c, AC8:a, AC8:b,
AC9:c, AC10:a,
AC10:b, AL4, AL5
Tonga-B6165-Celestial
2 yd



AC6:a, AC6:b,
AC8:c, AC10:c, AG2
Tonga-B6165-Island
1 3/8 yd



AL6, AL7
Tonga-B6166-Valor
1/2 yd



AC1:a-AC1:c,
AC11:a, AC11:b, AL14,
AL15, AG3, AG4
Tonga-B6168-Midnight
2 1/8 yd

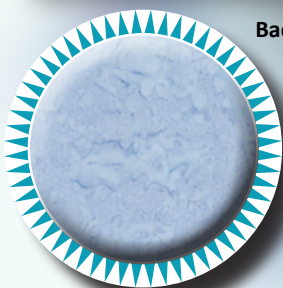


AC3:c, AC4:c, AC5:a-AC5:c,
AL1, AL8, AL9, AL10,
AL11, AG1, B1
Tonga-B7900-Mist
6 1/4 yd



Backing: 8 1/4 yd • Binding: Tonga B7900-Glacier, 3/4 yd

AC2:a, AC2:c,
AC7:b, AC9:a
Tonga-B7900-Straw
1 yd



AC11:c, AG5,
AL12, AL13
Tonga B7900-Glacier
2 3/4* yd
(*5 3/4 yd with C1 border
for 100" x 100" quilt.)



AC2:b
Tonga-B7900-Sheer
1/8 yd

Quiltworx.com
Judy Niemeyer Quilting

E-mail: info@quiltworx.com
Website: www.quiltworx.com

Visit us on:

