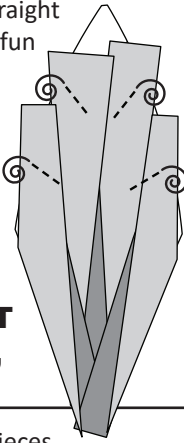


Continue adding the template pieces to each section. When you get to Section 8, the paper piecing turns from straight line piecing to curved line piecing which is very fun and unique.

Registration Lines: Before for you start the curved piecing you need to sew the Registration lines using a 2.8 stitch length basting stitch. The graphic to the right demonstrates the basting stitches to sew.



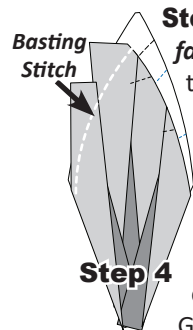
CURVED PAPER PIECING: UNIT AF1 (TEMPS AF1-8 AND AF1-9), BAG #AF1

Step 1: Remove the paper from the fabric pieces cut with *Temp AF1-8 and AF1-9*. If you have not sewn the basting lines, do so now!

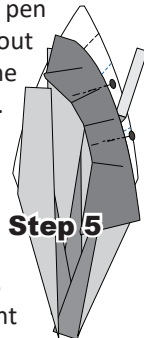
Step 2: Set your stitch length at about 2.8 and on Unit AF1 and sew a basting stitch on the curved dashed line marked *Basting Stitch Line 7*.

Step 3: Fold the paper back along the edge of the Basting Stitch Line 1 as shown and trim off the excess fabric as shown.

Step 4: Flip the paper over and position each unit *fabric-side-up*. Locate the basting stitches along the *Basting Stitch Line* sewn in Step 2.

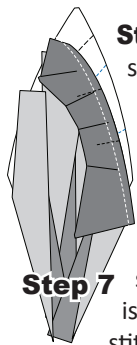


Step 5: Position the fabric for Sec. 8 (*Temp AF1-8*) facing *wrong-side-up*. Match and pin the [TRP] lines. Use your glue pen and run a small strip of glue (about 1/8" wide) on the fabric along the edge of the *Basting Stitch Line*. Glue the edge of the *Temp AF1-8* piece along the Basting Stitches, matching the TRP lines as you go.



Step 6: Once the strip is in place, the fabric is pressed with steam along the edges. This helps flatten the fabric along the seam area to prevent puckering when sewing the seam.

Step 7: We have provided you with two different sewing options on how to complete the curved piecing on the following page.

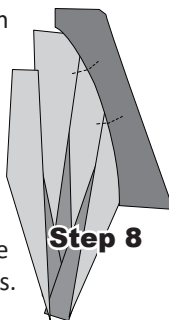


Option 1: The curved seam is completed when stitching a 1/4" seam allowance, by lining the edge of your quarter-inch foot up with the basting line. [Fabric Side Up]. This technique is very much the same as sewing a normal curved seam. After the seam is sewn flip the paper over and check for accuracy. Your stitching line should match up with the sew line labeled as *Line 8* on the front side of the foundation paper.

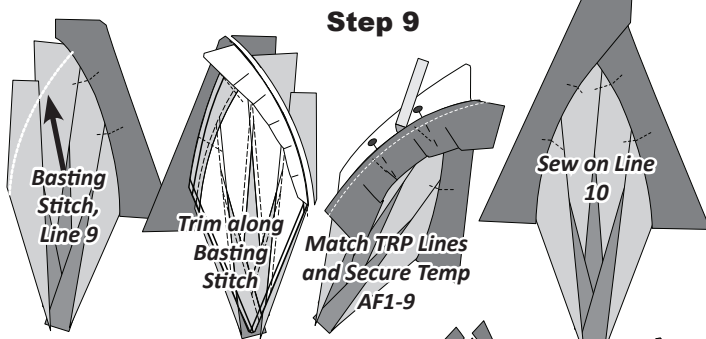
Option 2: The paper is flipped over so you are sewing, paper-side-up) and a curved seam is completed by stitching a 1/4" seam allowance on *Line 8*. If you use choose Option 2, be a little cautious about how you handle your paper, otherwise you may end up with tiny puckers. To avoid the pucker, hold the paper just off the surface of the sewing machine when stitching on the sew

line. This allows the fabric to feed evenly between the presser foot and the feed dogs.

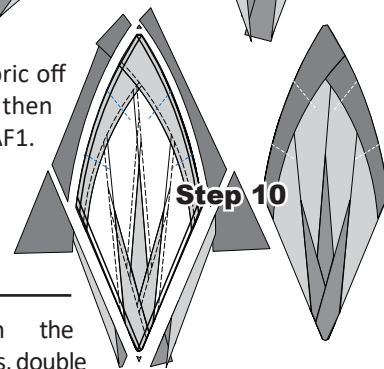
Step 8: Flip the paper over, check your seam to make sure you did not sew any puckers into the strips. If it looks good, press the fabric to cover Sec. 8.



Step 9: Repeat this process to add the *Template AF1-9* pieces to Section 9 on each of the (24) units.



Step 10: Trim the excess fabric off around the edge of the paper, then remove the paper from Unit AF1.

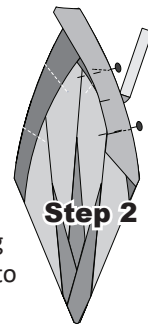


FINAL CURVED PIECING, T-TEMPS AF-1 AND AF-2

Step 1: Before sewing on the *T-Template AF-1 and AF-2* pieces, double check to make sure the TRP lines have been added.

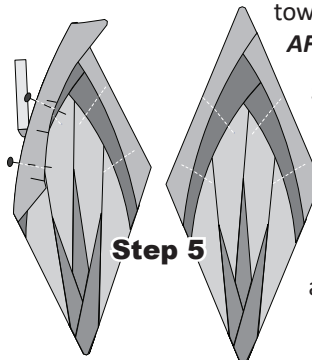
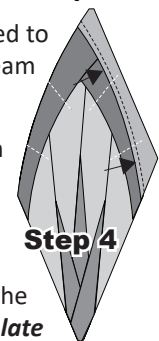


Step 2: With your *Template* pieces marked, match and pin the *T-Template AF-1* to the foundation paper unit (right-sides-together). A glue pen used to secure the edge of the fabrics along the seam allowance will help keep everything in place. Use the *Smart Corners* and *TRP Lines* to position the fabric piece perfectly.



Step 3: Watch for puckers and use steam if needed to get the pieces to lie flat before sewing along the seam allowance.

Step 4: Set your machine to sew a 1/4" seam and sew along the curved edge. Press the seams toward the *T-Template AF-1* fabric.



Step 5: Repeat the steps to add *T-Template AF-2* to the other side. Press the seams towards the *T-Template AF-2* fabric. Place the diamonds back into Bag #AF1 to await final assembly.