

WOVEN STAR, UNIT AL INSTRUCTIONS

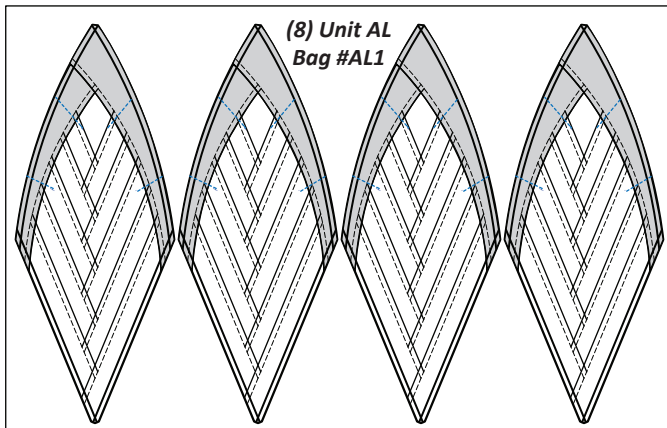
Ziploc Storage Bags: You will need (1) bag to complete the organization for these instructions.

- Bag #AL1: (8) Unit AL and Associated Templates

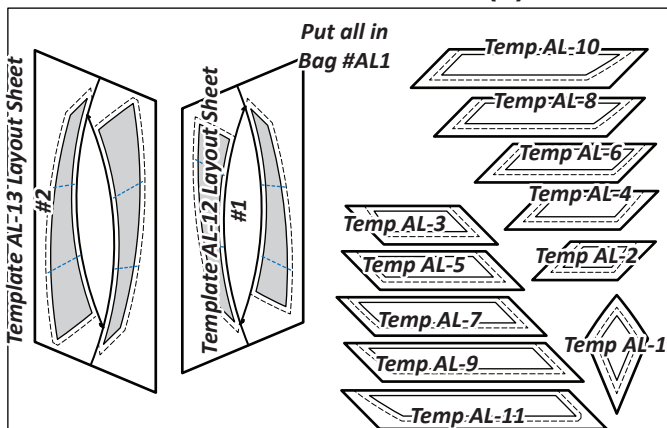
► Preparing the Foundation Papers:

Cut out (8) Unit AL on [NP 628] and (1) each of the Templates, Template Layout Sheets and T-Templates on [TP 399 & 400]. Place the Foundation Papers and Templates into their assigned Bag #. See the following newsprint graphics for the corresponding bag information. **Refer back to General Information for Foundation papers and templates for additional instructions on how to prepare your foundation papers and templates.*

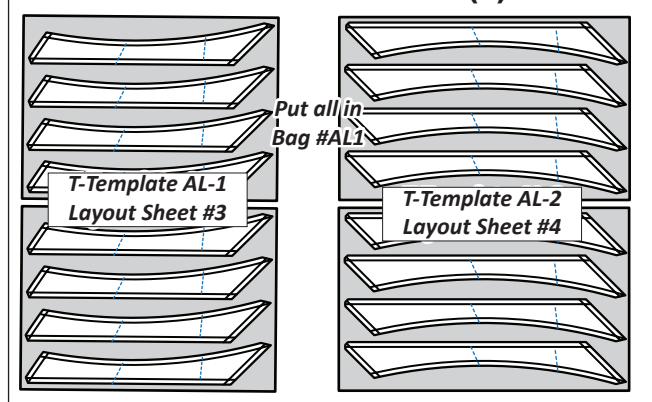
► (2) NP 628



► (1) TP 399



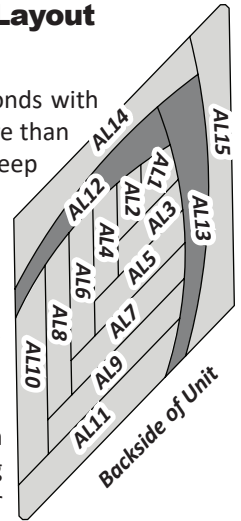
► (1) TP 400



► Fabric Reference and Color Layout Information

We have named all of the matching diamonds with an identifier like AA to AZ so if you put more than one block in a quilt, it will be easier to keep them organized. This is the AL block.

The table below includes yardage, fabric numbers, and a reference to which fabrics go with the templates and (TLS) to complete Units AL. This table is your guide for not only selecting your own colors, but keeping you organized. The color layout to the right shows the location of each fabric from the foundation paper side. Use this as a guide for pasting swatches to your papers so you remember which fabric goes where. Also, paste a swatch of your chosen fabric in the Assigned Colors column in the table!



Unit AL Yardage, Make (8)		
GROUP-AL FABRIC #	YARDAGE INCH	ASSIGNED COLOR
Fabric AL1: Temp AL-1	1/8 yd or (3")	Fabric Swatch
Fabric AL2: Temp AL-2	1/8 yd or (2")	Fabric Swatch
Fabric AL3: Temp AL-3	1/8 yd or (4")	Fabric Swatch
Fabric AL4: Temp AL-4	1/8 yd or (4")	Fabric Swatch
Fabric AL5: Temp AL-5	1/8 yd or (4")	Fabric Swatch
Fabric AL6: Temp AL-6	1/8 yd or (4")	Fabric Swatch
Fabric AL7: Temp AL-7	1/8 yd or (4")	Fabric Swatch
Fabric AL8: Temp AL-8	1/8 yd or (4")	Fabric Swatch
Fabric AL9: Temp AL-9	1/8 yd or (4")	Fabric Swatch
Fabric AL10: Temp AL-10	1/8 yd or (4")	Fabric Swatch
Fabric AL11: Temp AL-11	1/4 yd or (6")	Fabric Swatch
Fabric AL12: Temp AL-12 TLS #1	3/8 yd or (12-1/4")	Fabric Swatch
Fabric AL13: Temp. AL-13 TLS #2	3/8 yd or (13-1/2")	Fabric Swatch
Fabric AL14: T-Temp AL-1 T-TLS #3	3/8 yd or (13-1/2")	Fabric Swatch
Fabric AL15: T-Temp AL-2 T-TLS #4	1/2 yd or (15")	Fabric Swatch