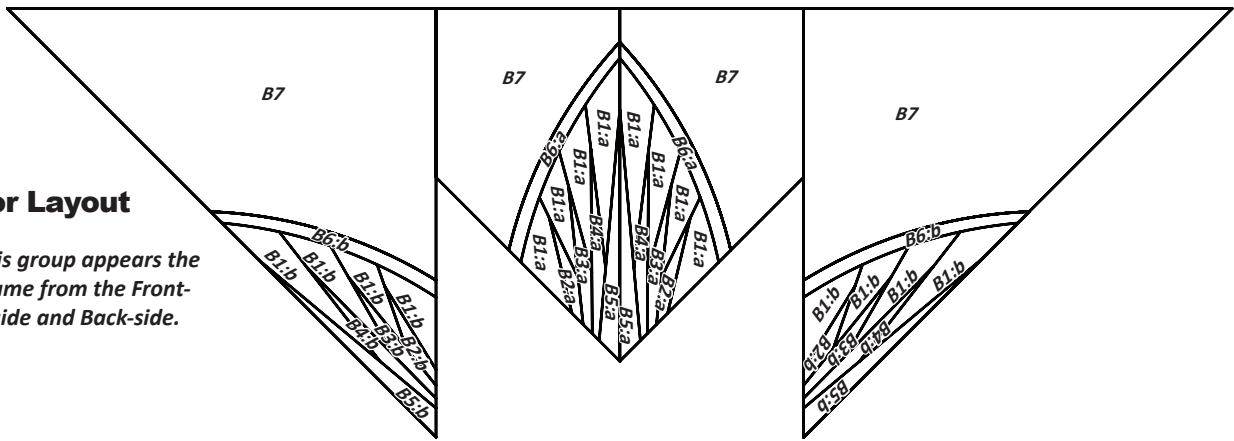


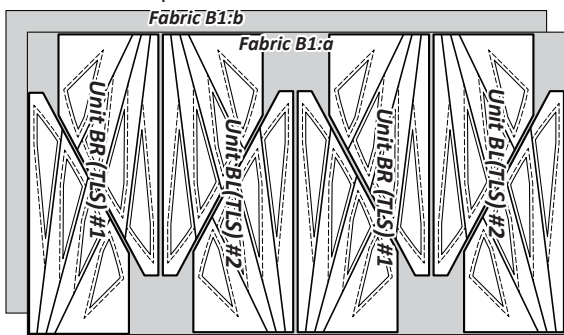
► **Color Layout**

This group appears the same from the Front-side and Back-side.

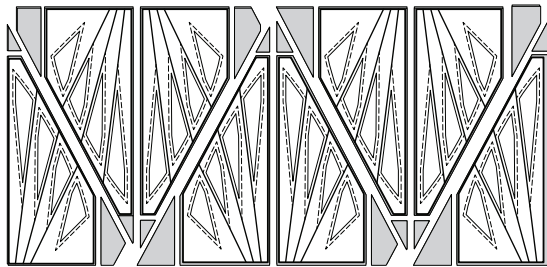


► **Fabric B1:a and B1:b TLS #1 & #2**

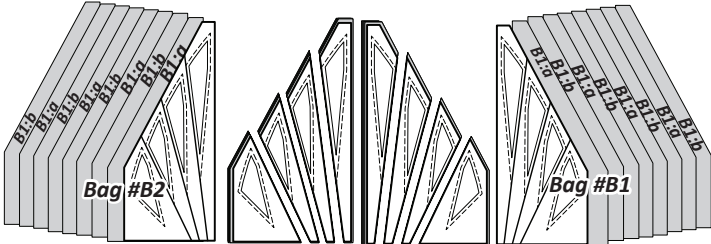
Step 1: Cut (1) 24" by 42" strip from each Fabric B1:a and B1:b and stack them facing *right-side up* with Fabric B1:b on the bottom and Fabric B1:a on the top.



Step 2: The *Unit BR & BL Template Layout Sheets #1 & #2* are positioned onto the strips as shown. Cut (4) pieces from each fabric matching the size of each (TLS). Reposition the (TLS) with each cut you make.



Step 3: The fabric pieces are stacked, starting with Fabric B1:b on the bottom, then B1:a, B1:b, and so forth ending with B1:a on the top. Paper clips are used to clip the paper templates to the fabric. The cutting is completed by cutting on each Cut Line in numerical order to separate the template pieces.



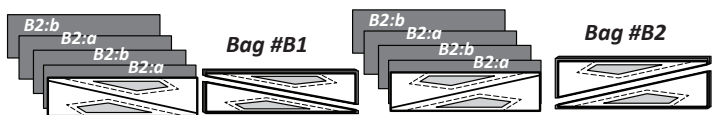
Step 4: Place the BR pieces with the foundation papers in Bag #B1 and the BL pieces with the foundation papers in Bag #B2.

► **Fabric B2:a & B2:b (TLS) #3 & #4**

Step 1: Cut (1) 3" by 42" strip from each Fabric B2:a and B2:b. Stack the strips facing *right-side up*, placing Fabric B2:b on the bottom and Fabric B2:a on the top. *Template BR-2 Layout Sheet #3* and *Template BL-2 Layout Sheets #4* are used to cut (2) pieces from each fabric.



Step 2: The fabric pieces are re-stacked, starting with Fabric B2:b on the bottom, then B2:a, B2:b, and so forth, ending with B2:a on the top. Paper clips are used to clip the paper templates to the fabric. The cutting is completed by cutting on Cut Line 1. Clip the pieces in each group together and place in the appropriate bag.



► **Fabric B3:a & B3:b (TLS) #5 & #6**

Step 1: Cut (2) 3" by 42" strips from each Fabric B3:a and B3:b. Stack the strips facing *right-side up*, placing Fabric B3:b on the bottom and Fabric B3:a on the top. *Template BR-4 Layout Sheet #5* and *Template BL-4 Layout Sheets #6* are used to cut (2) pieces from each fabric.



Step 2: The fabric pieces are re-stacked now, starting with a Fabric B3:b piece on the bottom, alternating with B3:a, ending with a B3:a piece on top. Cut on Cut Line 1, clip the pieces together, and place in the appropriate bag.

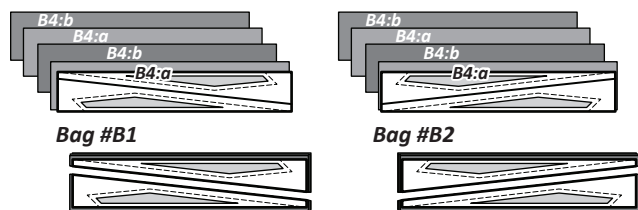


► Fabric B4:a & B4:b (TLS) #7 & #8

Step 1: Cut (2) 3" by 42" strips from each Fabric B4:a and B4:b. Stack the strips facing *right-side up*, placing Fabric B4:b on the bottom and Fabric B4:a on the top. *Template BR-6 Layout Sheet #7* and *Template BL-6 Layout Sheets #8* are used to cut (2) pieces from each fabric.



Step 2: The fabric pieces are re-stacked, starting with a Fabric B4:b piece on the bottom, then alternating with B4:a, ending with a B4:a piece on top. Cut on Cut Line 1, clip the pieces together, and place in the appropriate bag.

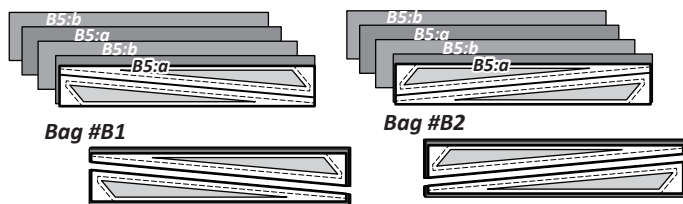


► Fabric B5:a & B5:b (TLS) #9 & #10

Step 1: Cut (2) 3" by 42" strips from each Fabric B5:a and B5:b. Stack the strips facing *right-side up*, placing Fabric B5:b on the bottom and Fabric B5:a on the top. *Template BR-8 Layout Sheet #9* and *Template BL-8 Layout Sheets #10* are used to cut (2) pieces from each fabric.

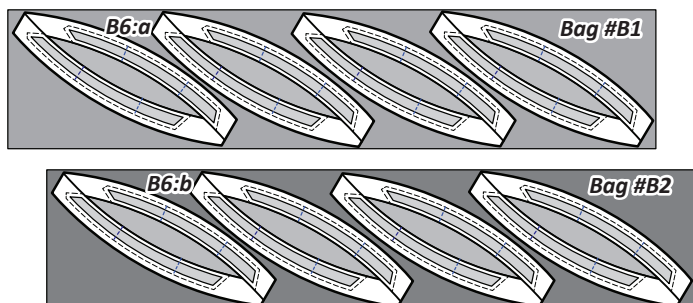


Step 2: The fabric pieces are re-stacked, starting with a Fabric B5:b piece on the bottom, then alternating with B5:a, ending with a Fabric B5:a piece on top. Cut on Cut Line 1, clip the pieces together, and place in the appropriate bag.

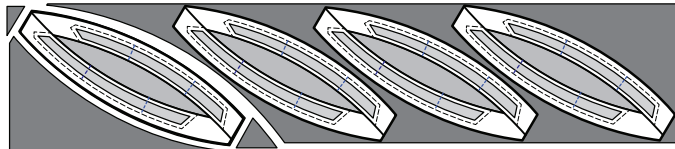


► Fabric B6:a & B6:b (TLS) #11

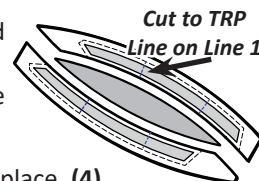
Step 1: Cut (1) 9" by 42" strip from Fabrics B6:a and B6:b. Place each strip on your table facing *wrong-side-up*. Position (4) Unit BL and BR TLS #11 on each strip as shown.



Step 2: BR & BL TLS #11 is printed with (4) registration lines. The layout sheets are sewn to the *wrong-side* of the fabric by stitching on each (TRP) Line using a minimum stitch length of 2.8 as a basting stitch. After the (TRP) lines are sewn, the template pieces are cut out around the perimeter of each unit.



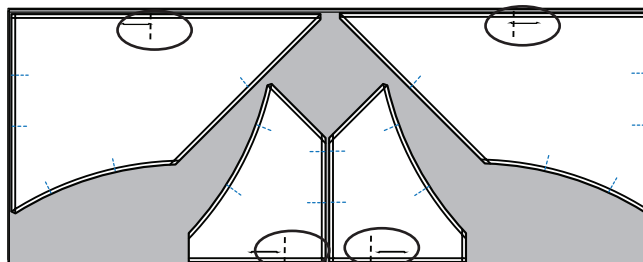
Step 3: To finish the cutting, cut to the 2nd TRP Line along Cut Line 1. Then, complete the cutting on Cut Line 2. Return to Cut Line 1 to complete the cutting.



Step 4: Clip the pieces together and place (4) Fabric B6:a pieces and (4) Fabric B6:b pieces in Bag #B1. Place the other (4) of each into Bag #B2. Clip them together with the B6:a pieces on top and B6:b pieces on the bottom.

► Fabric B7, T-Temps. B1R, B2R, B1L, B2L

Step 5: Cut and stack (4) 16-1/2" by 42" strips from Fabric B7 facing *right-side up*. Position the T-Templates as shown and cut (4) pieces for each template.

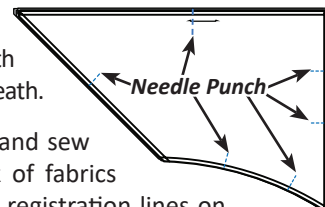


REGISTRATION LINES (TRP)

The T-Templates are printed with several registration lines. These lines are used to match up the curved seams, bias seams, and straight seams when assembling the units. The registration lines around the perimeter (marked with the ring in the graphic above) are matched up with the (TRP) lines printed on the border pieces in Group C. If you are not adding a (Group C) pieced border to your mixer pattern then you don't need to sew the registration marks along the outside perimeter of your blocks.

Marking the Registration Lines: Before placing these pieces back into a Bag, we strongly recommend marking each of the Registration lines using a Basting Stitch with a 2.8 stitch length, minimum. However, since you only have one T-Template for each piece and (8) pieces of fabric cut to that size, you cannot simply sew on the TRP lines to mark them like you did for the TLS #11 pieces. In this case, you must pre-mark them. There are a number of ways to accomplish this. Our favorite method is described below.

Step 1: Start by making sure the T-Templates are lined up perfectly with all the edges of the fabric pieces beneath.



Step 2: Unthread your machine and sew through the paper and the stack of fabrics with just the needle, marking the registration lines on each fabric with a series of needle punched holes.