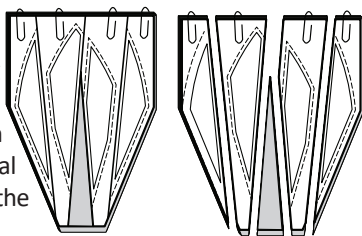
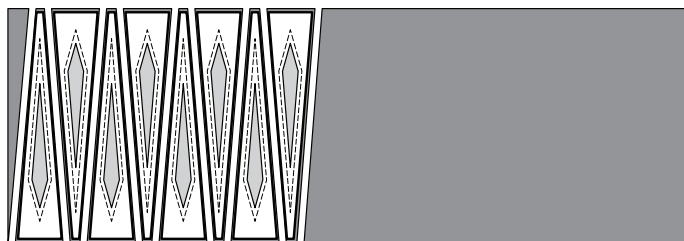


Step 3: The (8) pieces are stacked under the (TLS). A paper clip is used to clip each section to the fabric to keep the template pieces from moving in the cutting process. The cutting is completed by slicing through the paper on each cut line to yield (4) individual sections. Place the pieces with the Foundation Papers in Bag #AF1.



► **Fabric AF2: Temp AF1-1**

Step 1: Cut and stack (1) 16" by 42" strip facing *right-side up*. *Unit AF1, Template AF1-1* is used to cut (8) pieces. Place the pieces in Bag #AF1.

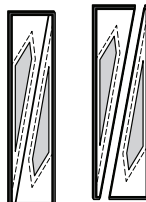


► **Fabric AF3: Temp AF1-4 Layout Sheet #3**

Step 1: Cut and stack (1) 13" by 42" strip facing *right-side up*. *Unit AF1, Template AF1-4 Layout Sheet* is used to cut (4) pieces the same size of the (TLS).

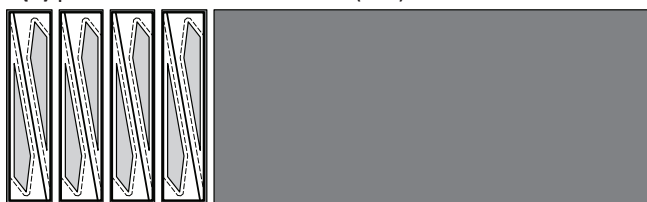


Step 2: Stack the (4) pieces under the (TLS). Cut the template on Line 1 to yield (8) pieces. Clip the pieces together and place in Bag #AF1.

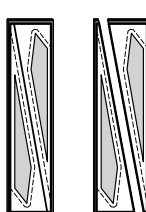


► **Fabric AF4: Temp AF1-5 Layout Sheet #2**

Step 1: Cut and stack (1) 13" by 42" strip facing *right-side up*. *Unit AF1, Template AF1-5 Layout Sheet* is used to cut (4) pieces the same size of the (TLS).

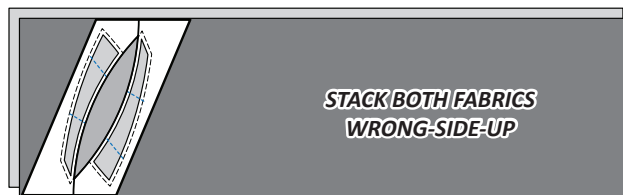


Step 2: Stack the (4) pieces under the (TLS). Cut the Template on Line 1 to yield (8) pieces. Clip the pieces together and place in Bag #AF1.

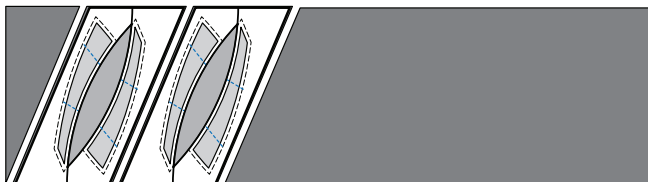


► **Fabric AF5:a and AF5:b: Temp AF1-8 Layout Sheet #4**

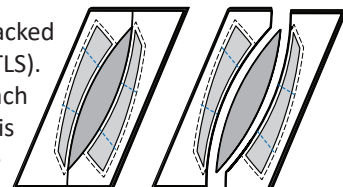
Step 1: Cut and stack (1) 12-1/4" by 42" strip facing *wrong-side up* from each of the (2) AF5 Fabrics.



Step 2: The *Unit AF1 Template AF1-8 Layout Sheet* is used to cut (4) pieces, (2) from each AF5 Fabric, matching the size and shape of the (TLS). Reposition the template for each additional cut.



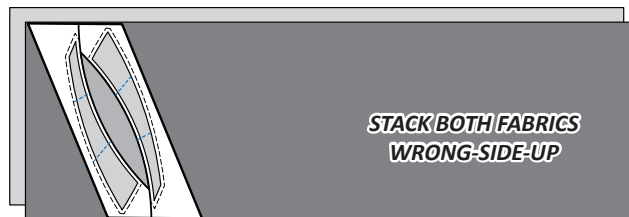
Step 3: The (4) pieces are stacked *wrong-side-up* under the (TLS). A paper clip is used to clip each section to the fabric. The cutting is completed by slicing through the paper on each cut line.



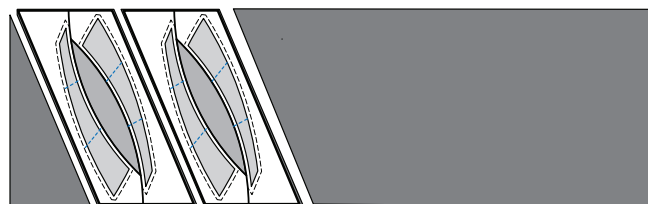
Step 4: Reference the *Sewing The TRP Lines* Section before placing these pieces in Bag #AF1.

► **Fabric AF6:a and AF6:b: Temp AF1-9 Layout Sheet #5**

Step 1: Cut and stack (1) 13-1/2" by 42" strip facing *wrong-side up* from each of the (2) AF6 Fabrics.



Step 2: The *Unit AF1 Template AF1-9 Layout Sheet* is used to cut (4) pieces, (2) from each AF6 fabric, matching the size and shape of the (TLS). Reposition the template for each additional cut.



Step 3: The (4) pieces are stacked *wrong-side-up* under the (TLS). A paper clip is used to clip each section to the fabric. The cutting is completed by slicing through the paper on each cut line.

