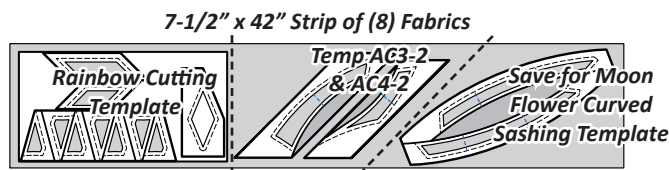


**Step 4:** Finally, the matching curved sashing pieces in the Moon Flower layout can be cut from the leftover piece of a 7-1/2" strip. The graphic below shows where the curved sashing pieces should be placed. But for now, simply cut this area away and place with the Group B fabrics and papers. The rest of this cutting will be taken care of in the Group B instructions.



**Step 5:** Cut on the dashed lines shown above. Then, cut around the Templates and TLSs inside the Rainbow cutting Template Square until you have a stack of (8) fabrics, (1) from each R1 to R8, beneath each template.

**Step 6:** Remove the Templates from the top of Templates AC1-2 and AC1-3 and shuffle Fabrics R1 and R2 to the bottom of each stack. Replace the Templates on top, then use a paper clip to clip Templates AC1-1, AC1-2, and AC1-3 to the top of each stack. Place these back into Bag #AC-1.



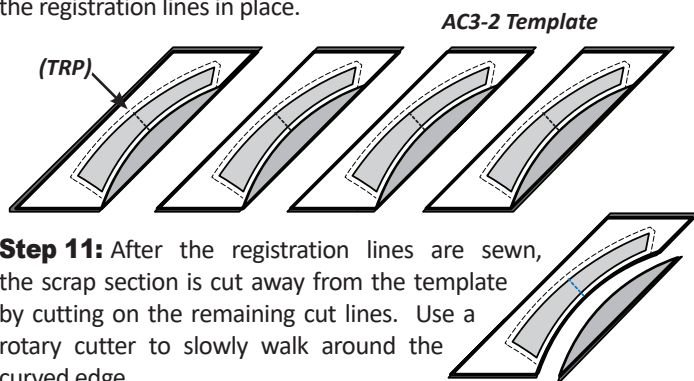
**Step 7:** The (8) pieces cut with TLS #3 are stacked beneath the (TLS). A paper clip is used to clip each section to the fabric to keep the template pieces from moving in the cutting process (paper clip not shown). The cutting is completed by slicing through the paper on each cut line to separate the individual sections.



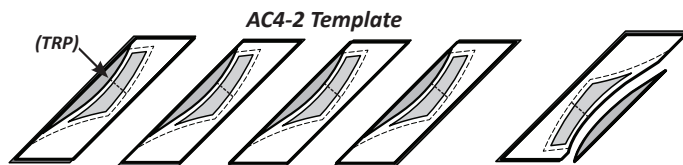
**Step 8:** Place the pieces with the Foundation Papers in Bag #AC2.

**Step 9:** Flip over the R1 to R8 fabrics, *wrong-side-up*, for the second area of the 7-1/2" strip. Cut between the AC3-2 and AC4-2 Templates to separate the stack, then carefully trim away any excess fabric around each piece.

**Step 10:** When you cut apart the AC3-2 and AC4-2 Templates sheets earlier, this resulted in (8) individual templates. Place (1) of Template with each piece of (8) fabrics. Place the Templates on top, one piece at a time. A very light swipe of glue will help keep the pieces in place. Or, use a flower pin. Then, find the (TRP) lines on each individual template. A stitch length of 2.8 is used to sew the registration lines in place.



**Step 11:** After the registration lines are sewn, the scrap section is cut away from the template by cutting on the remaining cut lines. Use a rotary cutter to slowly walk around the curved edge.



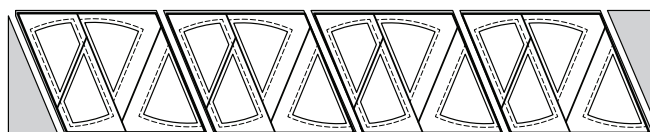
**Step 12:** Place the pieces cut with *Template AC3-2* with the Foundation Papers in Bag #AC3. And, the pieces with *Template AC4-2* with the Foundation Papers in Bag #AC4.

► **Fabric AC1: TLS #1**

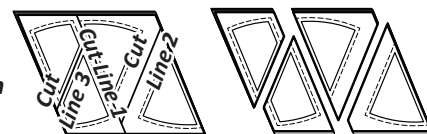
**Step 1:** Cut and stack (1) 8-1/2" by 42" strip facing *right-side up*.



**Step 2:** The *Unit AC1 Template Layout Sheet #1* is used to cut (4) pieces, matching the size and shape of the (TLS). Reposition the template for each additional cut.



**Step 3:** The (4) pieces are stacked under the (TLS). A paper clip is used to clip each section to the fabric to keep the template pieces from moving in the cutting process. The cutting is completed by slicing through the paper on each cut line to yield (8) individual sections. *Your pattern may have three lines labeled as Cut Line 1. This will be corrected in future printings. The correct labels should be as shown to the right.*



**Step 4:** Place the pieces with the Foundation Papers in Bag #AC1.

► **Fabric AC5: TLS #2**

**Step 1:** Cut and stack (2) 4-1/2" by 42" strips facing *right-side up*.



**Step 2:** The *Unit AC2 Template Layout Sheet #2* is used to cut (8) pieces, matching the size and shape of the (TLS). Reposition the template for each additional cut.



**Step 3:** The (8) pieces are stacked under the (TLS). A paper clip is used to clip each section to the fabric to keep the template pieces from moving in the cutting process. The cutting is completed by slicing through the paper on each cut line.



**Step 4:** Place the pieces with the Foundation Papers in Bag #AC2.

► **Fabric AC7: Temp AC3-1**

**Step 1:** Cut and stack (1) 10" by 42" strip facing *right-side up*.

