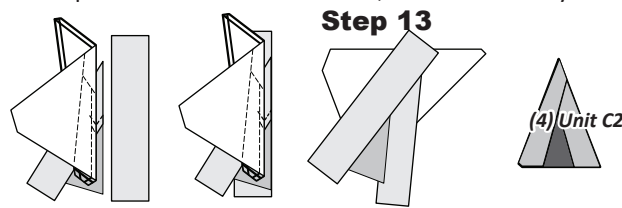
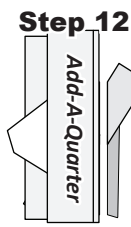
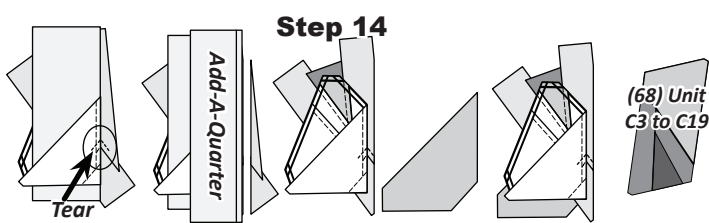


Step 12: Trim the fabric with the *Add-A-Quarter* ruler.

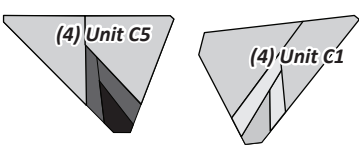
Step 13: Position the third fabric piece (this should be Group 2: Sec. 3, Temp C-3, **cut from Fabric C2:h**) **right-side up** next to the paper. Lift the paper and slide the fabric under Sec. 3. Repeat for all **(80)** units. Then, take the pieces to your sewing machine, open the paper, sew on Line 2 and press. At this point, all of the Unit C2 pieces are complete so set them aside. Graphic shows the unit trimmed, but do not trim yet.



Step 14: Add Sec. 4 in the same manner. Note that the Section **(4)** pieces for Unit C1 and C20 are a different size than the rest. But, the fabrics are all the same, so just follow in numerical order (noting that Papers #5 to #8 are finished already) to complete all **(80)** units. At this point, Units C3 to C19 are complete. Graphic shows **(1)** finished unit that is trimmed. But, don't trim them yet. Set these aside to finish Units C1 and C20.



Step 15: Repeat the same process for Section 5, just note that you are only working with papers #1 to #4 and #77 to #80. Place them in numerical order, then add Sec. 5 to complete the paper piecing.



► Transition & Registration Points (TRP)

Step 1: After the paper piecing is complete, the registration lines are sewn on the foundation papers with a basting stitch set at about 2.8. TRP Lines are only printed on a few specific units. The transition points that we have added match up with the Units and Templates in Group B and Group D. Units that include TRP lines are shown in the TRP Graphic below:

- Units C3, C5, C6, C9, C10, C12, C13, C16, and C19

NOTE - TRP Lines: If you are not making a Queen Size quilt you don't need to sew the (TRP) lines along the outside edges of the C Units that would normally match up with the units in Group D, but you will need them along the inside edge for Group B.

Trimming: The excess fabric and paper is trimmed off around the perimeter of each unit after the basting stitches are sewn. After the papers are trimmed, the thread ends on each of the basting stitches are cut off on the backside of the paper. On the fabric side, the thread ends are trimmed leaving a tail about 1/2" long. Lay the units out, in numerical order on a design wall. Don't remove the paper.

ASSEMBLE THE UNITS

Sewing the Units: The border units are arranged and sewn in numerical order. Take Unit C1 and C2 to your machine. Remove the paper from Unit C1 and C2, then sew a 1/4" seam to sew them together. The seams are pressed towards the C1 Units. Repeat this process to add Unit C3, then C4, and so on, until you have sewn all of the pieces together in numerical order.

Pressing: Press the seams in the direction of the arrows. Pressing is really optional for these border units. If you are sewing these units with a heavy cotton print, or a very strong contrast between light and dark value, you may want to change the pressing direction to suit your design the best.

