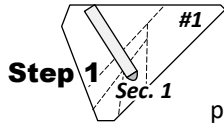


FOUNDATION PAPER PIECING: UNIT C1 TO C20, BAG #C1

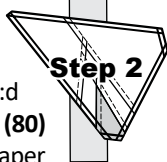
NOTE - Tracing the Dashed Lines: Place the foundation paper onto a light table. Flip the foundation paper over and trace the dashed lines printed on the front side of the foundation paper, onto the backside of the paper.



Step 1
Sec. 1

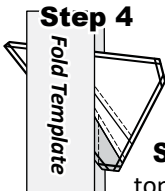
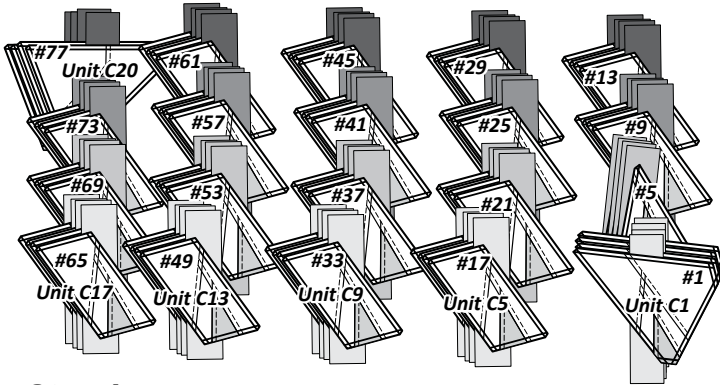
Step 1: The first piece of fabric is placed **wrong-side-up** on your table. Glue is used to adhere the fabric to the backside of the paper labeled as Paper #1 (Unit C1).

Step 2: Lift the foundation paper, slide the fabric under Sec. 1. Make sure you are starting with the first fabric in Group 2, which should be Fabric C2:d for Unit C1. **Repeat Steps 1 and 2** for each of the (80) foundation units. Work in numerical order (from Paper #2 to Paper #80). All of your Section 1 pieces should be added now.



Step 2

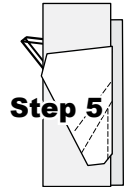
Step 3: Reorder your papers with Paper #80 on the bottom, stacking in reverse numerical order, ending with Paper #1 on top.



Step 4

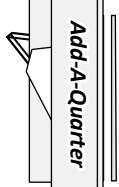
Step 4: Then, place the fold template over the top of Sec. 1. Line the edge up with the solid black line marked Line 1.

Step 5: Fold the paper back over the top of the fold template.



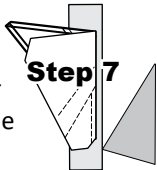
Step 5

Step 6: Place the **Add-A-Quarter** ruler next to the folded paper and trim the fabric with your rotary cutter.



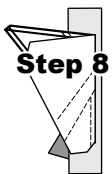
Step 6

Step 7: Place the fabric piece for Sec. 2 (this should be Fabric C3:d for Unit C1), **right-side up** next to the folded back paper.



Step 7

Step 8: Lift the paper, and slide the fabric under Sec. 1, line the sew-side up with the trimmed seam allowance. Repeat **Steps 1-8** for all (80) units before moving onto Step 9. Work in numerical order (Paper #2 to Paper #80) so your fabrics are sewn to the correct paper. You should have used all of your Sec. 2 pieces now. If you have stacked the papers as you go along nicely Paper #80 should be on top.

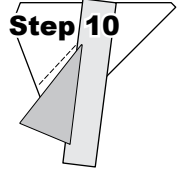


Step 8

Step 9: Take the (80) units to your machine and begin sewing Unit C20 on Line 1 Paper #80. Sew the units in reverse numerical order, ending with Unit C1. The stitches should start and stop about 1/8" past the beginning and the end of each stitch line. Complete the sewing on each of the (80) Units before moving onto the next step.

NOTE - Bobbin Thread: Double check your bobbin!

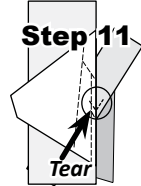
NOTE - Trimming the Threads: Sewing past the ends of your sew line makes it possible to cut the thread ends off each time you trim with your Add-A-Quarter ruler.



Step 10

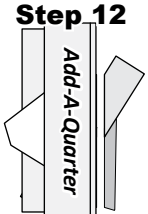
Step 10: Loosen the glue under Sec. 1, then press the fabric pieces open on the backside of each paper. Press open all (80) units. Restack them so that Paper #80 is on the bottom and Paper #1 is on the top.

Step 11: Beginning again with Paper #1, Unit C1. Position the fold template over the top of Sec. 1 and 2, lining the edge up with Line 2. Fold the paper back and tear the paper along the stitches on Line 1. Stop tearing when you hit the fold template.



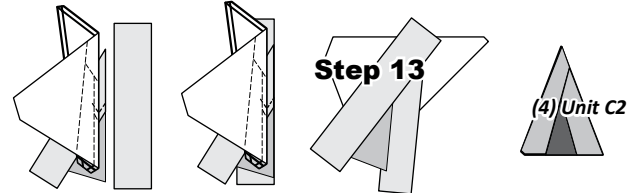
Step 11

Step 12: Trim the fabric with the **Add-A-Quarter** ruler.



Step 12

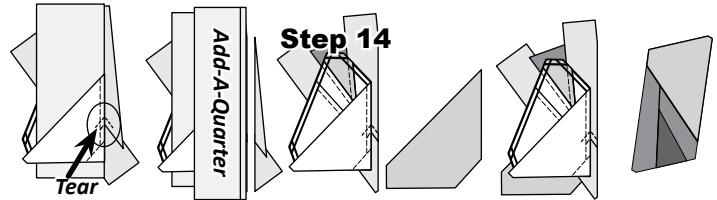
Step 13: Position the third fabric piece (this should be Group 2: Sec. 3, Temp C-3, cut from Fabric C2:d) **right-side up** next to the paper. Lift the paper and slide the fabric under Sec. 3. Repeat for all (80) units. Then, take the pieces to your sewing machine, open the paper, sew on Line 2 and press. At this point, all of the Unit C2 pieces are complete so set them aside. Graphic shows the unit trimmed, but do not trim yet.



Step 13

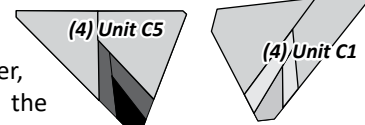
(4) Unit C2

Step 14: Add Sec. 4 in the same manner. Note that the Sec. 4 pieces for Unit C1 and C20 are a different size than the rest. But, the fabrics are all the same, so just follow in numerical order (noting that Papers #5 to #8 are finished already) to complete all (80) units. At this point, Units C3 to C19 are complete. Graphic shows (1) finished unit that is trimmed. But, don't trim them yet. Set these aside to finish Units C1 and C20.



Step 14

Step 15: Repeat the same process for Section 5, just note that you are only working with papers #1 to #4 and #77 to #80. Place them in numerical order, then add Sec. 5 to complete the paper piecing.



(4) Unit C5

(4) Unit C1

► Transition & Registration Points (TRP)

Step 1: After the paper piecing is complete, the registration lines are sewn on the foundation papers with a basting stitch set at about 2.8. TRP Lines are only printed on a few specific units. The transition points that we have added match up with the Units and Templates in Group B and Group D.