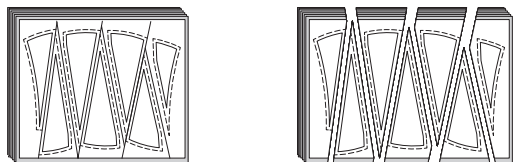


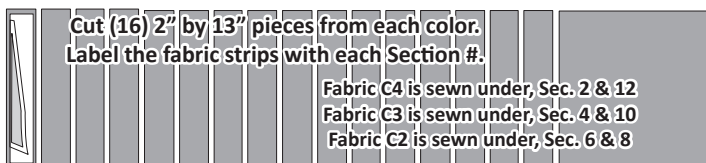
Step 4: Stack the remaining (8) pieces. Position the paper clips along the edge of each section. Start cutting on **Cut Line 1**, and proceed, in order, to **Cut Line 6**.



Step 5: Re-stack the pieces and place back into Bag #C1.

► **Fabrics C2, C3, and C4**

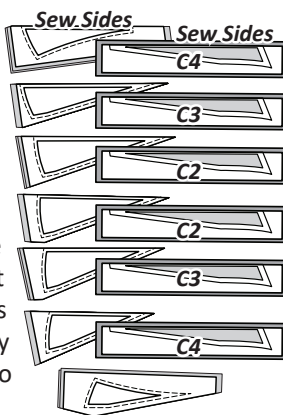
Step 1: Cut (3) 13" x 42" strips, (1) from each of the (3) Accent fabrics numbered C2, C3, and C4. Stack the fabric strips **right-side-up** and sub-cut (16) 2" by 13" pieces from each fabric using the **FL5 Spike Template** at a guide.



Step 2: There are (4) **FL-5 Spike Templates** in the Bag. Clip (1) to each of your fabrics, sorted by color, and discard the remaining. Place the pieces back into Bag #C1.

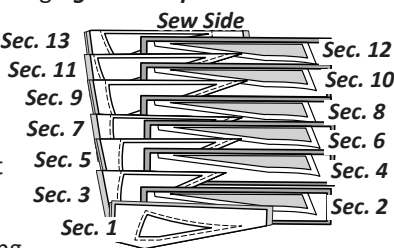
■ **SORTING AND STACKING: UNIT FL5, BAG #C1**

Before beginning paper piecing, match the templates and fabric pieces in Bag #C1 up with the Sec. numbers on the foundation papers. Note that the spikes are currently grouped by color. You will need to separate them into two stacks of (8) and place them, according to Fabric Reference number in the place shown in the diagram to the right. It may be helpful to label the templates and the stacks without a template by section number and Fabric Reference to keep these in the correct order.



Sorting: Sort the pieces in numerical order on your table with the templates and fabric pieces facing **right-side-up** for each section.

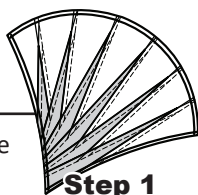
The pieces are then stacked in the sewing order with the **sew sides** aligned at the top as shown to the right. Sec. 1 does not have a sew side.



Stacking: The stacking process begins with Sec. 13 on the bottom. The pieces are then stacked in reverse order, one section at a time, finishing with Sec. 1 on top as shown in the graphic.

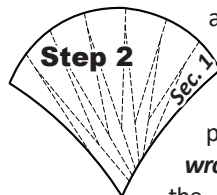
■ **FOUNDATION PAPER PIECING: BAG #C1 UNIT FL5**

Step 1: Place Unit FL5 **right-side-up** on your table and position as shown.

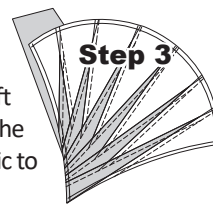


NOTE - Trace the Dashed Lines: Place the foundation paper onto a light table. Flip the foundation paper over and trace the dashed lines printed on the front side of the foundation paper, onto the backside of the paper. Don't be afraid to spend the time tracing. These lines are helpful when placing each fabric piece under the foundation papers.

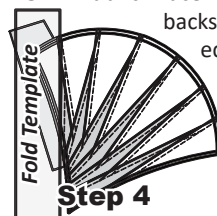
Step 2: Find Sec. 1 on the foundation paper. Place a small amount of fabric glue on the backside of the paper under Sec. 1.



Step 3: Position the first piece of fabric for Sec. 1 **wrong-side-up** on your table. Lift the foundation paper, slide the fabric under Sec. 1 and glue the first piece of fabric to the **backside** of the paper.

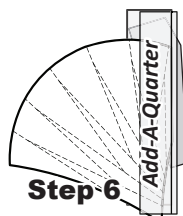
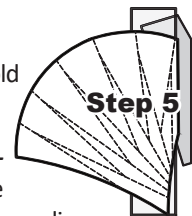


NOTE - Fabric Placement: The wrong-side of the fabric is against the backside of the paper. The fabric must extend beyond the edges of the dashed lines to cover the underneath side of Sec. 1.



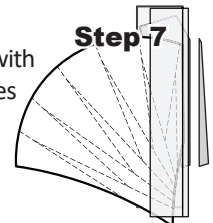
Step 4: Place the fold template over the top of Sec. 1, lining the edge up on the solid black line marked Line 1.

Step 5: Fold the paper back over the top of the fold template.

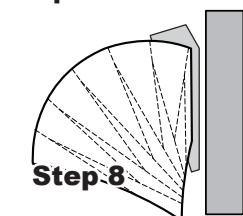


Step 6: Place the **Add-A-Quarter** ruler next to the folded back section on the paper lip-side down.

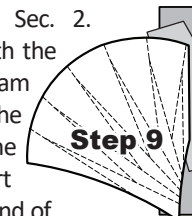
Step 7: Trim the fabric with your rotary cutter. This leaves you with a quarter-inch seam allowance which is lined up with the sew side on the next piece of fabric.



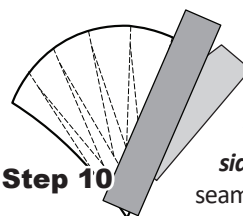
Step 8: Remove both the **Add-A-Quarter** and the fold template. Place the fabric piece for Sec. 2, **right-side-up** next to the folded back paper as shown.



Step 9: Lift the foundation paper and slide the fabric under Sec. 2. Line the sew-side up with the trimmed quarter-inch seam allowance. Make sure the fabric extends beyond the boundaries of the dashed lines for Sec. 2. Open the paper and sew on Line 1. The stitches should start and stop about 1/8" past the beginning and the end of each stitch line.



NOTE - Trim the Threads: Sewing past the ends of your sew line makes it possible to cut the thread ends off each time you trim with your Add-A-Quarter ruler.



NOTE - Loosen the Glue!: Loosen the glue under Sec. 1. This should be done before you press.

Step 10: Flip the paper over and press the fabric pieces to the open position on the **right-side** of the fabric. Don't press any folds into the seam lines.