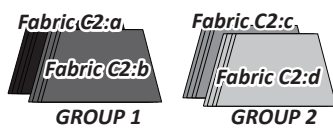
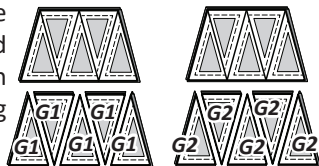


**Step 3:** Restack the Rectangles into (2) stacks as follows:

- Group 1: (4) Fabric C2:a on bottom, then (4) C2:b on top.
- Group 2: (2) Fabric C2:c on bottom, then (4) C2:d on top.



**Step 4:** Place (1) Unit C1 Thru C20 TLS #2 onto each stack. Cut the Template Layout Sheet and fabrics beneath apart on the Cut Lines, moving in numerical order until all the pieces are cut apart. It might be helpful to label the Templates in Stack 1 as Group 1 and those in Stack 2 as Group 2, which will help you keep the stacking order correct later in the pattern.



**Step 5:** Clip the pieces together and place back into Bag #C1.

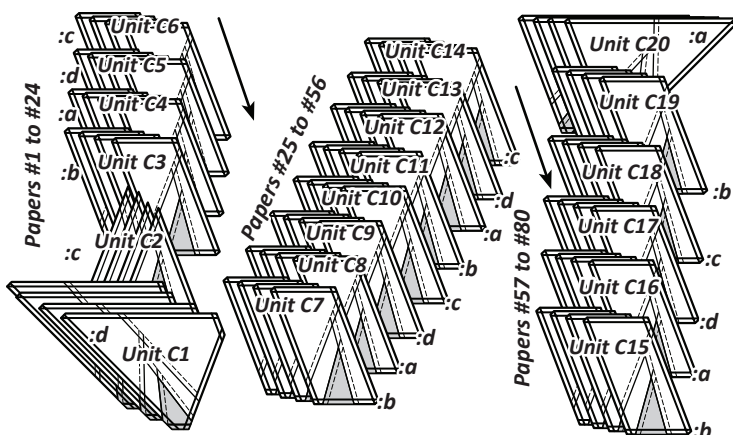
## STACKING: UNIT C1 TO C20, BAG #C1

The C1 to C20 papers are all stacked and sewn at the same time. You will need to stack both the papers and the fabrics. The units you will be sewing together are almost all the same (Unit C1, C2, and C20 have a different shape, but can still be sewn at the same time if you follow these directions. They all have different numbers as some of them have TRP lines on them that must be matched up to other units during final assembly. Therefore, there is a specific sewing order to assemble the border pieces together. These stacking instructions are the most complicated part of this unit, so make sure you have it right before you start sewing!

**Stacking your Papers:** The first part of stacking will be to stack your papers. If you have paper clipped them all together as directed on Page 1, this should be easy. Simply pull them out and sort them by number. Start with the (4) Unit C20 on the bottom, then work backwards in numerical order, ending with Unit C1 on top.

Number the papers, #1 to #80. We realize this is time consuming, but it will prevent you from making a sewing mistake and allow you to chain piece this entire border at once, which will more than make up for the labeling time you will have with the papers.

You also may want to add a label on each group that identifies which of the (4) Fabric C2 and C3 pieces it should be sewn with. A small :a, :b, :c, and :d is noted by each group so you know how to label the units.

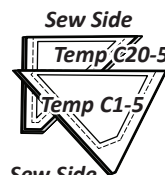


**Fabric Stacking:** Position the templates and fabric pieces in numerical order facing *right-side up*, with the *sew-sides* aligned at the top. Sec. 1 does not have a sew side. Sections 1, 2 and 3, are identical for each Unit other than the fabric changes so, you have a Group 1 and a Group 2. When you get to Section 4, note that Unit C2 doesn't have a Section 4. Also, note that only Unit C1 and C20 have a Sec. 5.

**Stacking:** The stacking process for each Foundation Unit begins with the largest Sec. # on the bottom. In this case, follow the noted stacking order:

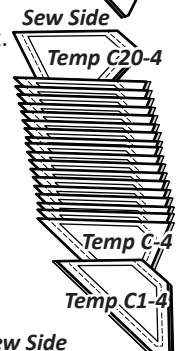
### ► Section 5:

- Unit C20, Sec. 5, Temp C20-5, pieces on the bottom of your stack.
- The Unit C1 Sec. 5, Temp C1-5 pieces next.



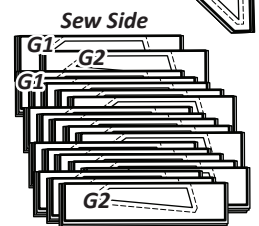
### ► Section 4:

- The Unit C20, Sec. 4, Temp C20-4 pieces are next
- Then, stack all of the Sec 4, Temp C-4.
- Then, stack the Sec 4, Temp C1-4 pieces.



### ► Section 3:

- (1) Group 1: Sec. 3 Temp C-3.
- (1) Group 2: Sec. 3 Temp C-3.
- (1) Group 1: Sec. 3 Temp C-3.
- (1) Group 2: Sec. 3 Temp C-3.
- (1) Group 1: Sec. 3 Temp C-3.
- (1) Group 2: Sec. 3 Temp C-3.
- (1) Group 1: Sec. 3 Temp C-3.
- (1) Group 2: Sec. 3 Temp C-3.
- (1) Group 1: Sec. 3 Temp C-3.
- (1) Group 2: Sec. 3 Temp C-3.
- (1) Group 1: Sec. 3 Temp C-3.
- (1) Group 2: Sec. 3 Temp C-3.



### ► Section 2:

- (1) Group 1: Sec. 2 Temp C-2.
- (1) Group 2: Sec. 2 Temp C-2.
- (1) Group 1: Sec. 2 Temp C-2.
- (1) Group 2: Sec. 2 Temp C-2.
- (1) Group 1: Sec. 2 Temp C-2.
- (1) Group 2: Sec. 2 Temp C-2.
- (1) Group 1: Sec. 2 Temp C-2.
- (1) Group 2: Sec. 2 Temp C-2.
- (1) Group 1: Sec. 2 Temp C-2.
- (1) Group 2: Sec. 2 Temp C-2.
- (1) Group 1: Sec. 2 Temp C-2.
- (1) Group 2: Sec. 2 Temp C-2.



### ► Section 1:

- (1) Group 1: Sec. 1 Temp C-1.
- (1) Group 2: Sec. 1 Temp C-1.
- (1) Group 1: Sec. 1 Temp C-1.
- (1) Group 2: Sec. 1 Temp C-1.
- (1) Group 1: Sec. 1 Temp C-1.
- (1) Group 2: Sec. 1 Temp C-1.
- (1) Group 1: Sec. 1 Temp C-1.
- (1) Group 2: Sec. 1 Temp C-1.
- (1) Group 1: Sec. 1 Temp C-1.
- (1) Group 2: Sec. 1 Temp C-1.
- End with, stack (1) Group 2: Sec. 1 Temp C-1.

