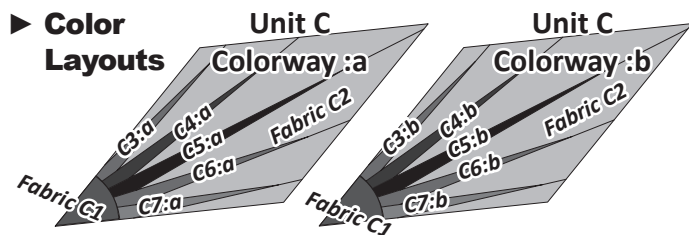


C Bag. \*Refer back to General Information for Foundation papers and templates for additional instructions on how to prepare your foundation papers and templates.

► **Lighthouse Diamond Fabric Information:**

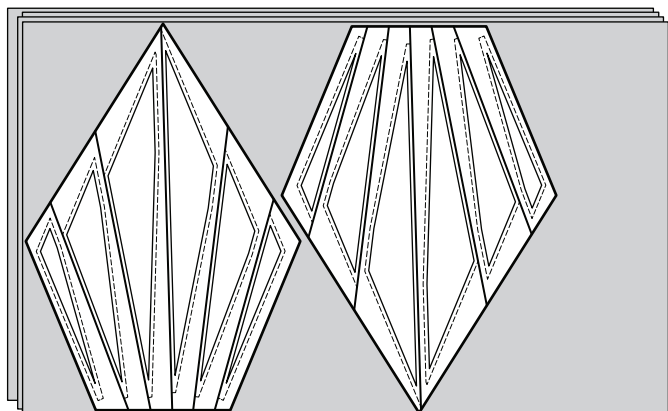
The table on the next page includes yardage, Fabric Numbers, and a reference to which fabrics go with the Templates and TLS for Unit C. This table is your guide for not only selecting your own colors, but keeping you organized. A color layout is included below the table showing two color options, colorway C:a, and colorway C:b. This provides a graphical reference of fabric placement as well. Don't forget to cut a swatch of your chosen fabric to paste in the box in the Assigned Colors column!

<b>Unit C ~ Group C, Make (8)</b>		
<b>GROUP-C FABRIC #</b>	<b>YARDAGE INCH</b>	<b>ASSIGNED COLOR</b>
<u>Accent Fabric C1</u> <u>T-Template C</u>	<u>1/4 yd</u> or (5-1/4")	<b>FABRIC</b> <b>4348</b>
<u>Background Fabric C2</u> Unit C (Background TLS)	<u>2-7/8 yd</u> or (102")	FABRIC 4348
<u>Accent Fabric: C3:a, C4:a,</u> <u>C5:a, C6:a, C7:a</u> Unit C (Accent Spikes)	<u>3/4 yd</u> or (24")	FABRIC 244
<u>Accent Fabric: C3:b, C4:b,</u> <u>C5:b, C6:b, C7:b</u> Unit C (Accent Spikes)	<u>3/4 yd</u> or (24")	FABRIC 245

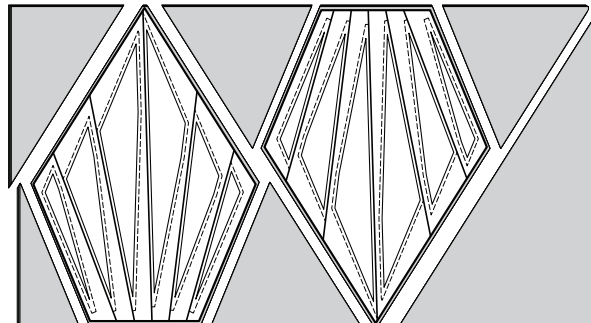


**CUTTING INSTRUCTIONS, GROUP C, UNIT C**

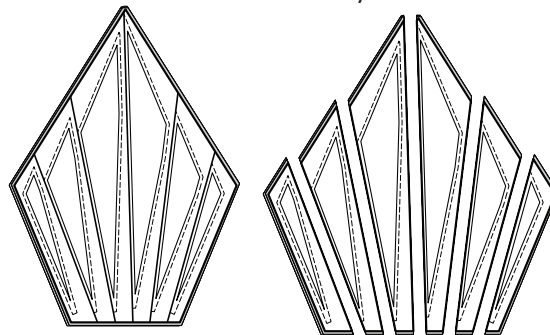
**Background Fabric C2:** Cut and stack (4) 25-1/2" by 42" strips facing *right-side-up*.



**Step 1:** Position the **Unit C Background Template Layout Sheet** onto the stack of (4) strips and cut (2) sets of fabric pieces the shape of the TLS for a total of (8) pieces.



**Step 2:** Restack the (8) pieces *right-side-up* and place the TLS onto the top of the stack. Using a ruler and rotary cutter, cut around the perimeter, then slice through the paper and fabric, following the Cut Lines in numerical order on each of the layout sheets.



**Step 3:** When the cutting is completed, you will have (8) pieces for each section in Unit C. Clip the templates and fabric pieces together and place into Bag #C1.

**Accent Fabrics C3 to C7:** Cut (1) 24" x 42" strip from the (2) fabrics set aside for Accents C3 to C7. The fabric SKU numbers for these are 244 and 245 (see Back Coversheet or Table to the right for more information). Cut (20) 2" x 24" strips from each 24" cut. Organize the strips as follows, making sure each stack has all of the Fabric 244 strips on the top and all the Fabric 245 strips on the bottom:

- Accent Fabric A3: (2) 2" Strips from each fabric to be cut with Temp C2 Spike.
- Accent Fabric A4: (2) 2" Strips from each fabric to be cut with Temp C4 Spike.
- Accent Fabric A5: (4) 2" Strips from each fabric to be cut with Temp C6 Spike.
- Accent Fabric A6: (2) 2" Strips from each fabric to be cut with Temp C8 Spike.
- Accent Fabric A7: (2) 2" Strips from each fabric to be cut with Temp C10 Spike.

