

Step 11: Open the paper, sew on Line 2 and press.

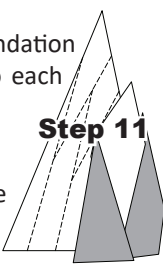
Step 12: Continue with the process for foundation paper piecing by adding the template pieces to each section on the foundation units.

► **Transition & Registration Points**

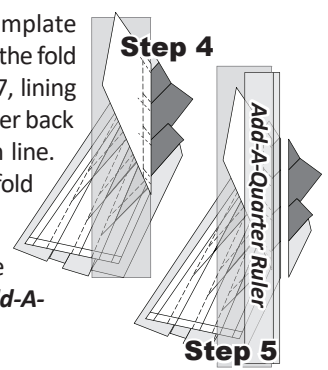
After the paper piecing is completed, the registration lines are sewn on the foundation papers with a basting stitch set at about 2.8. There are two registration line printed on each foundation sheet. The Registration Lines are identified with the letters (TRP) along the edges of the Foundation Unit.

A basting stitch is sewn on each line. The stitching begins along the edge of the paper and stops at the end of the dotted line. Registration lines eliminate the need for excessive pinning, and over stretching, leaving you with a perfect fit. It is well worth your time to sew these lines!

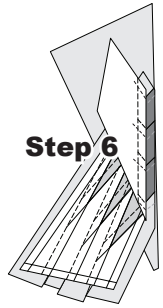
NOTE - Sewing them Faster: To speed up the sewing process, lift the needle at the end of each dotted line, and move the paper under the presser foot to the next (TRP) line. Without cutting the threads, begin sewing on the next line.



Step 4: Continue adding the template pieces to each section 2-7. Position the fold template over the top of Sections 1-7, lining the edge up with Line 7. Fold the paper back and tear the paper along each stitch line. Stop tearing when you hit the fold template.

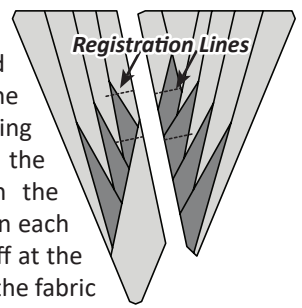


Step 5: Trim the fabric with the **Add-A-Quarter** ruler.



Step 6: Position the last fabric piece **right-side up** under Sec. 8, open the paper and sew on Line 7.

Step 7: Press the fabric on the back side of the paper, then sew the registration lines.

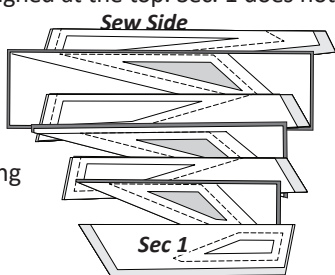


Trimming: The excess fabric and paper is trimmed off around the perimeter of each unit after the basting stitches are sewn. The threads along the edge of the papers are cut off in the trimming process. The thread ends on each of the basting stitches are trimmed off at the paper on the backside of the unit. On the fabric side of the unit the thread ends are trimmed leaving a tail about 1/2" long.

■ **STACKING: UNIT AE2 BAG #AE2**

Position the templates and fabric pieces in numerical order facing **right-side up**, with the **sew-sides** aligned at the top. Sec. 1 does not have a sew side.

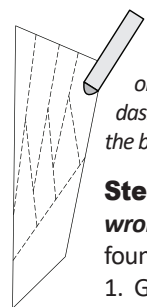
Stacking: The stacking process begins with the largest Sec. # on the bottom. The pieces are stacked in reverse order finishing with Sec. 1 on top.



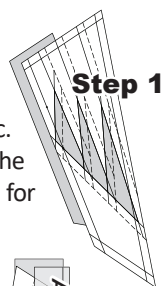
■ **FOUNDATION PAPER**

PIECING: UNIT AE2

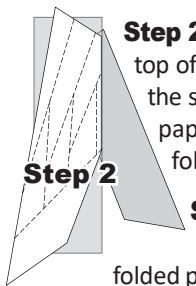
NOTE - Tracing the Dashed Lines: Place the foundation paper onto a light table. Flip the foundation paper over and trace the dashed lines printed on the front side of the foundation paper, onto the backside of the paper.



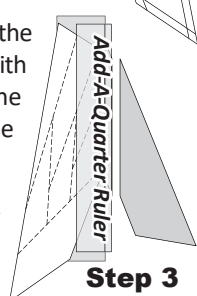
Step 1: The first piece of fabric is placed **wrong-side-up** on your table. Lift the foundation paper, slide the fabric under Sec. 1. Glue is used to adhere the fabric to the backside of the paper. Repeat Steps 1 and 2 for each foundation unit.



Step 2: Place the fold template over the top of Sec. 1 and line the edge up with the solid line marked Line 1. Fold the paper back over the top of the fold template.

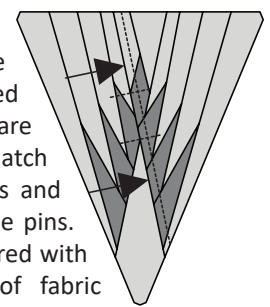
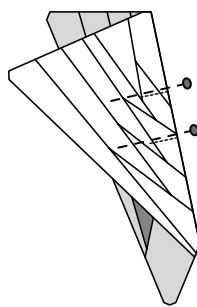


Step 3: Place the **Add-A-Quarter** ruler next to the folded paper and trim the fabric with your rotary cutter.



Assembling the Snowflake:

The papers are removed before the two units are sewn together. Match the registration lines and secure with a couple pins. The edges are secured with a small amount of fabric glue. A quarter-inch seam allowance is sewn along the edge to complete the snowflake.



■ **CUTTING STRIPS: UNIT AE1-AE5**

► **Lone Star Fabric Information**

The Table at the top of the next page shows the Fabric references for the Lone Star portion of your Diamond block. Cut a small swatch to paste into the Yardage in Inches column for each strip. You can also use the diamond graphic to the left of the table. This shows the front side of the unit. Cut small swatches of fabric and paste them into each space (S1 to S19) on the graphic to see what your star will look like when you complete your pattern.

In the steps on Page 10 that involves using a swatch of fabric on your Foundation Sheets to stay organized, you will be placing the swatches in position on the back-side of the Foundation Sheets to create the look of this diamond on the front side when you've completed the sewing. When you color Quiltster, the Fabric references for each diamond will show up in the same place as shown in the graphic on Page 9. In Quiltster, there is an AE- in front of each S fabric. For simplicity sake, we dropped the AE in these directions. If you are working with more than one diamond