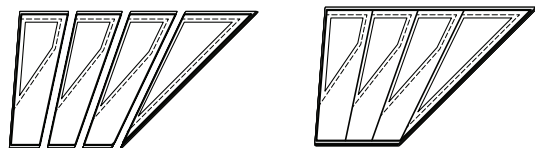
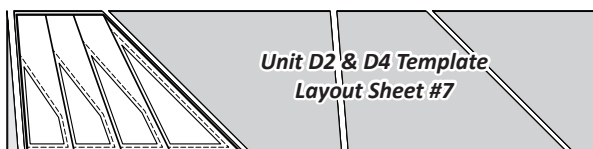


Step 3: Stack the (8) pieces right-side-up under the (TLS). Paper clip each section to the fabric and cut on CUT LINES 1-3 to separate the individual sections. Place these pieces in Bag #D1.



Step 4: The *Unit D2 & D4 Template Layout Sheet #7* is used to cut (8) pieces from the remaining (3) strips, matching the size and shape of the TLS.

NOTE - # of Pieces to cut: (3) pieces are cut from (2) strips and (2) pieces are cut from (1) strip.

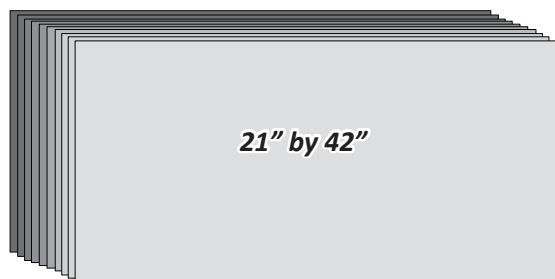


Step 5: Stack the (8) pieces right side up under the (TLS). Paper clip each section to the fabric and cut on CUT LINES 1-3 to separate the individual sections. Place these pieces in Bag #D2.

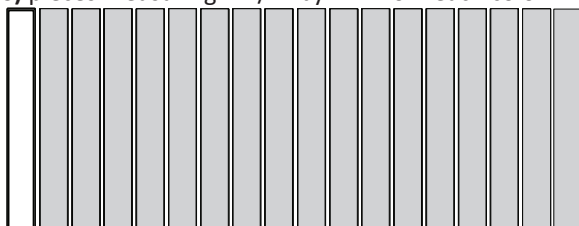


► **Fabric D8:a, b, c, d, e, f, g, h, i, & j, Unit D1-D4 Spike Template D**

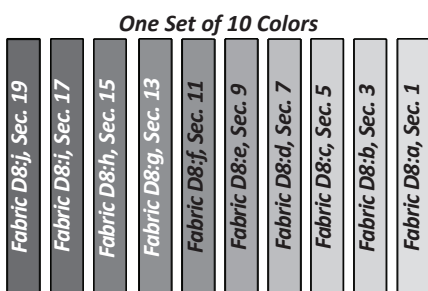
Step 1: Cut, stack and layer (1) 21" by 42" strip from each Fabric D8:a-j facing *right-side up*.



Step 2: The *Unit D1, D2, D3, & D4 Spike Template D* is used to cut (16) pieces measuring 2-1/2" by 21" from each color.



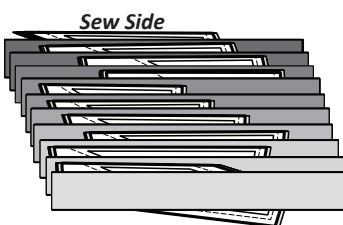
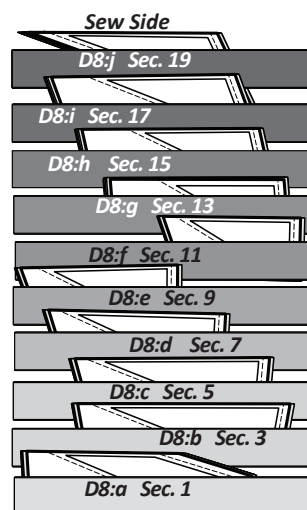
Step 3: Each color is now divided into two sets of (8) pieces. The strips are labeled with the color letter and Sec # assigned on the Cutting Chart. You should now have (2) complete sets of (8) strips of the (10) different colors.



Step 4: One set of the (10) colors is placed into Bag #D1, the other set into Bag #D2.

STACKING: UNITS D1 AND D3, BAG #D1

Units D1 and D3 units are stacked and assembled at the same time. The template pieces are now stacked in the sewing order. Position the templates and fabric pieces in numerical order facing *right-side up*, with the *sew-sides* aligned at the top. Sec. 1 does not have a sew side.



Stacking: The stacking process begins with the largest Sec. # on the bottom. The pieces are stacked in reverse order finishing with Sec. 1 on top.

FOUNDATION PAPER PIECING: UNIT D1 & D3

NOTE - Tracing the Dashed Lines: Place the foundation paper onto a light table. Flip the foundation paper over and trace the dashed lines printed on the front side of the foundation paper, onto the backside of the paper.

Step 1: The first piece of fabric is placed *wrong-side-up* on your table. Lift the foundation paper, slide the fabric under Sec. 1. Glue is used to adhere the fabric to the backside of the paper. Repeat Steps 1 and 2 for each foundation unit.

Step 2: Place the fold template over the top of Sec. 1. Line the edge up with the solid black line marked Line 1.

Step 3: Fold the paper back over the top of the fold template.