

Step 4: Clip the template and fabric pieces together. Place the B2R pieces in the Unit B2R sub-bag, and the B2L pieces with Unit B2L sub-bag in Bag #B2.

► **Fabric B6:a & B6:b: T-Template B1 & B2**

Step 1: Cut (2) 4" by 42" strips from each Fabric B6:a and B6:b. Stack the strips facing *right-side up*, placing Fabric B6:b on the bottom and Fabric B6:a on the top.



Step 2: T-Templates B1 & B2 are placed onto the strips as shown. Cut (4) pieces from each fabric matching the size of the Template Layout Sheet.

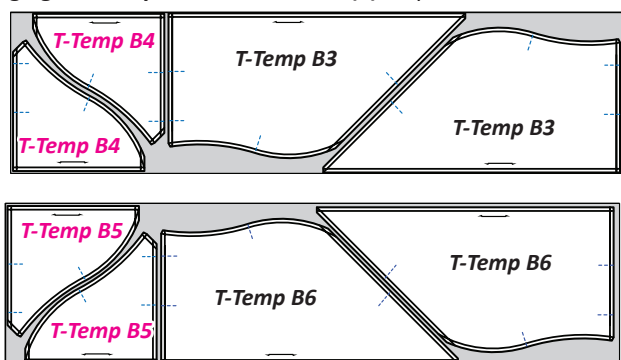


Step 3: Restack the pieces, placing (4) each, Fabric B6:b on the bottom and (4) each, Fabric B6:a on top. Clip the template and fabric pieces together and complete the cutting for each Template. Place these pieces into Bag #B3.



► **Fabric B7: T-Template B3 to B6**

Step 1: Cut (4) 11" by 42" strips from Fabric B7. Stack the strips facing *right-side up* into two stacks of (2) strips.



Step 2: T-Templates B3 & B4 are placed onto one stack of strips and T-Templates B5 & B6 are placed on the other stack of strips. Cut (4) pieces matching the size and shape of each Template. Place these pieces into Bag #B3.

■ **REGISTRATION LINES (TRP)**

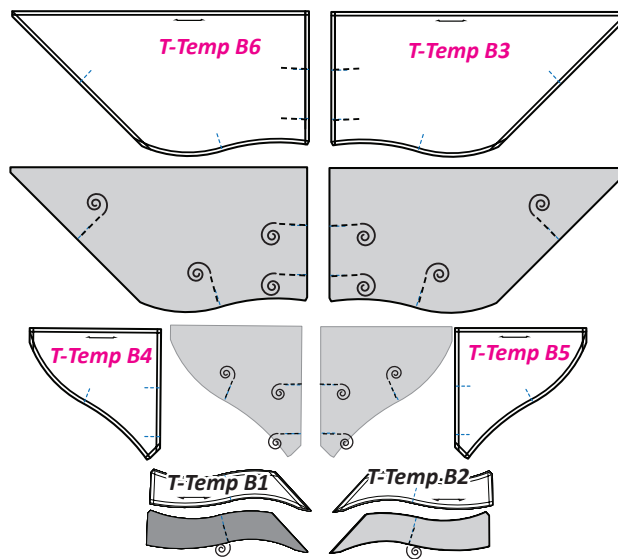
Step 1: The T-Templates have registration lines (marked as dotted lines with a TRP label). Remove each T-Template set from Bag #B3 (all the T-Template B1 pieces are a set, all the T-Template B2 pieces are a set, and so on). Make sure the Template is stacked on top of the fabrics and all of the edges are perfectly aligned in each set. Each of the T-Templates are shown graphically in the next column.

Step 2: Unthread your machine and with the T-Template B1 set at your machine and perfectly aligned, sew through the paper and the stack of fabrics beneath with just the needle, marking the registration lines on each fabric.

Step 3: Re-thread the machine and set the stitch length = 2.8 or greater. Sew on the lines marked by the needle-punching.

Step 4: Repeat this process with each T-Template set.

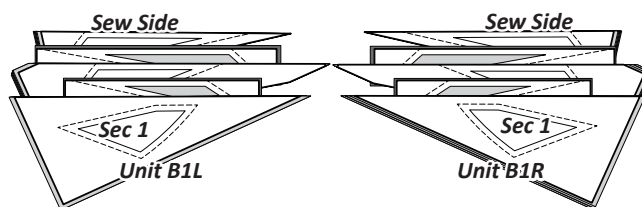
NOTE - Marking Pencil Option: Double check the needle punch holes against the T-Template before sewing each piece. If the needle punch holes do not match because the pieces weren't perfectly aligned when punched, you may need to use a marking pencil and mark the registration lines on the backside of the fabric.



■ **STACKING: UNIT B1L AND B1R, BAG #B1**

Position the templates and fabric pieces in numerical order for each unit facing *right-side up*, with the *sew-sides* aligned at the top. Sec. 1 does not have a sew side.

Stacking: The stacking process begins with the largest Sec. # on the bottom of each stack. The pieces are stacked in reverse order finishing with Sec. 1 on top. The paper piecing instructions are written for the Left side Unit B1L.



■ **FOUNDATION PAPER PIECING: UNIT B1L**

NOTE - Tracing the Dashed Lines: Place the foundation paper onto a light table. Flip the foundation paper over and trace the dashed lines printed on the front side of the foundation paper, onto the backside of the paper.

Tracing

Step 1: The first piece of fabric is placed *wrong-side-up* on your table. Lift the foundation paper, slide the fabric under Sec. 1. Glue is used to adhere the fabric to the backside of the paper. Repeat Steps 1 and 2 for each foundation unit.

Step 1