

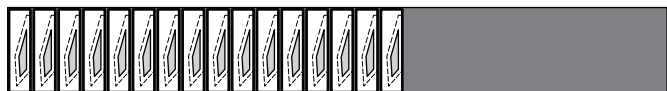
Step 3: Eight (8) pieces are stacked under each Template Layout Sheet. A paper clip is used to clip each section to the fabric to keep the template pieces from moving in the cutting process.

Step 4: The cutting is completed by slicing through the paper on each cut line to separate the individual sections. Place the individual template pieces clipped to the fabric with the **Unit B1 Foundation Papers** in Bag #B1.



► **Fabric B2:a and B2:b: (Temp B1-4) Unit B1**

Step 1: Cut and stack (1) 5-1/2" by 42" strip facing *right-side up* from each fabric B2:a and B2:b. The **Unit B1 Accent Templates B1-2** are used to cut (16) pieces from each color.

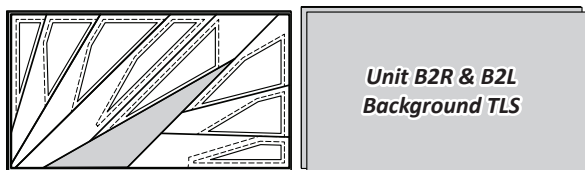


Step 2: The template pieces are divided by color into four stacks of (8) pieces. Paper clips are used to keep the fabric and template pieces together. Place these pieces with the **Unit B1 Foundation Papers** in Bag #B1.

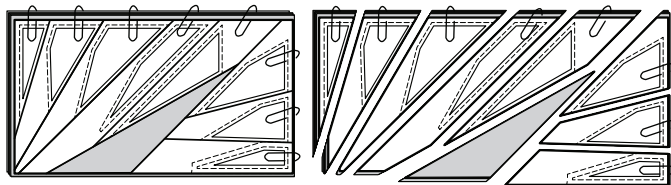


► **Fabric B3: (TLS) Unit B2L and B2R**

Step 1: Cut and stack (4) 12" by 42" strips facing *right-side up*. The **Unit B2 Background Template Layout Sheet** is used to cut (8) pieces.



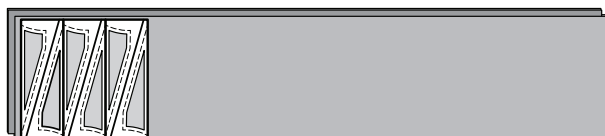
Step 2: The (8) pieces are stacked under the Template Layout Sheet. Paper clips are clipped around the edge of the fabric on each section before cutting. The cutting is completed by slicing through the paper on each cut line to separate the individual sections.



Step 3: Place the B2L Template pieces with the **Unit B2L Foundation Papers** in Bag #B2. Place the B2R Template pieces with the **Unit B2R Foundation Papers** in Bag #B3.

► **Fabric B4:a and B4:b: (Spike (TLS) Unit B2L and B2R**

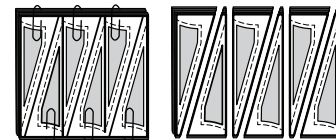
Step 1: Cut and stack (1) 8-3/4" by 42" strip facing *right-side up* from each fabric B4:a & B4:b.



Step 2: The **Unit B2L and B2R Spike (TLS)** is used to cut (4) pieces measuring the same size as the layout sheet from each color.



Step 3: The (8) pieces are then layered and stacked together under the Template Layout Sheet, starting with the pieces cut from Fabric B4:b on the bottom, leaving the B4:a pieces on the top. The cutting is completed by slicing through the paper on each cut line to separate the individual sections.

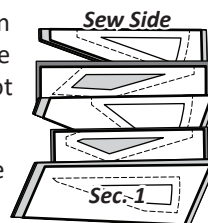


Step 4: The fabrics are now sorted by color into three stacks of (8) pieces. Each stack is clipped together with one paper template. The fabric are divided into two groups. Place the pieces back into with the associated Foundation Papers for each Unit B2L & B2R.



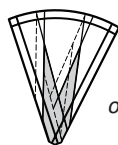
STACKING: UNIT B1 BAG B1

Position the templates and fabric pieces in numerical order facing *right-side up*, with the *sew-sides* aligned at the top. Sec. 1 does not have a sew side.



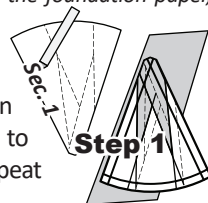
Stacking: The stacking process begins with the largest Sec. # on the bottom. The pieces are stacked in reverse order finishing with Sec. 1 on top.

FOUNDATION PAPER PIECING: UNIT B1

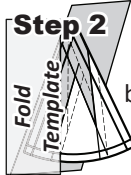


NOTE - Tracing the Dashed Lines: Place the foundation paper onto a light table. Flip the foundation paper over and trace the dashed lines printed on the front side of the foundation paper, onto the backside of the paper.

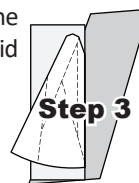
Step 1: The first piece of fabric is placed *wrong-side-up* on your table. Lift the foundation paper, slide the fabric under Sec. 1. Glue is used to adhere the fabric to the backside of the paper. Repeat Steps 1 and 2 for each foundation unit.



Step 2: Place the fold template over the top of Sec. 1. Line the edge up with the solid black line marked Line 1.



Step 3: Fold the paper back over the top of the fold template.



Step 4: Place the **Add-A-Quarter** ruler next to the folded paper and trim the fabric with your rotary cutter.



Step 5: Place the fabric piece for Sec. 2, *right-side up* next to the folded back paper. Lift the paper, and slide the fabric under Sec. 1, line the sew-side up with the trimmed seam allowance. Repeat

