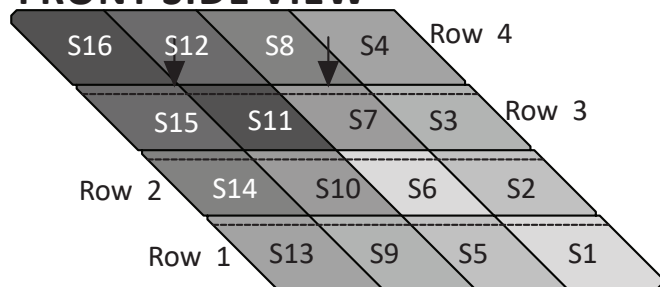


Step 9: Remove the foundation papers from under Row-3 without disturbing the pins. Sew both strips together with Row-3 next to the feed dogs. To finished the star, remove the foundation papers from under Row-4 and press the seam towards Row-3. The process is repeated to complete each of the **(8)** star point.

FRONT SIDE VIEW



► Finishing the Block

To avoid Y-seams in the assembly process the star points are not joined at this time. The pieces are set aside until all the piecing is completed for the remaining groups in your pattern.

GROUP B: NEW YORK BEAUTY 10" SQUARE INSTRUCTIONS

Ziploc Storage Bags: You need **(3)** Bags to complete the organization for these instructions. Label the bags as follows to stay organized .

- Bag #B1: **(16)** Unit B1 Papers, and associated templates
- Bag #B2: **(8)** Unit B2L Foundation Papers and Cutting B2L/B2R Template Layout Sheets
- Bag #B3: **(8)** Unit B2R Foundation Papers.

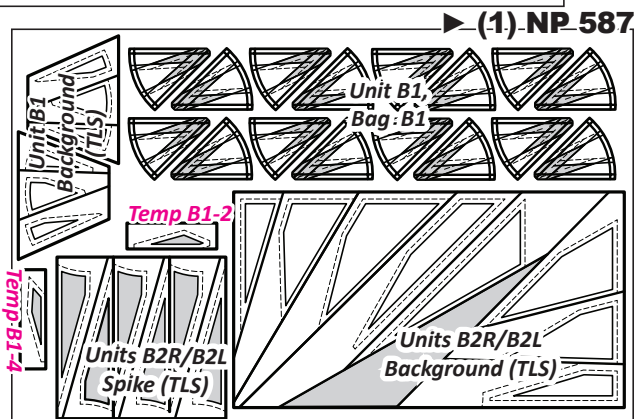
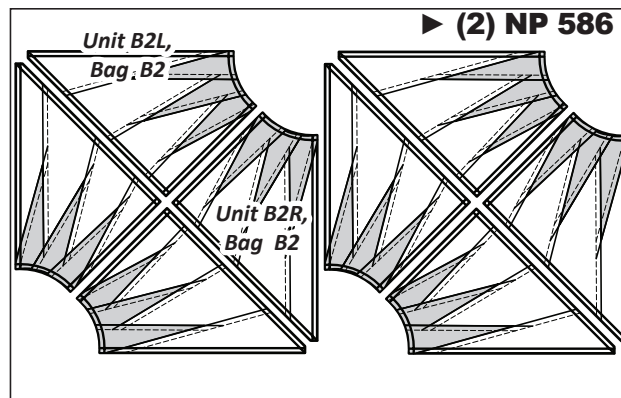
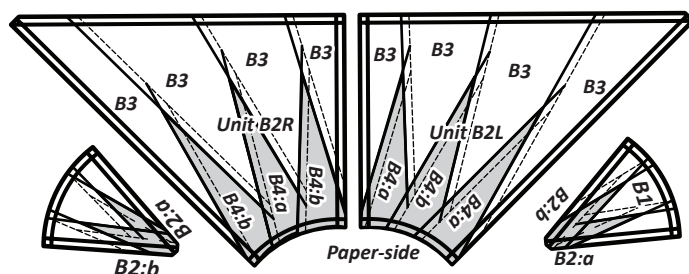
► Preparing the Foundation Papers:

Cut **(16)** Unit B1, and **(8)** each Unit B2L and B2R [NP 586 & NP 587], along with **(1)** of each Template and (TLS). See the newsprint graphics in the next column for information on how to organize your units and templates into bags. *Refer back to General Information for Foundation papers and templates for additional instructions on how to prepare your foundation papers and templates.

► New York Beauty Fabric Information:

The table in the next column includes yardage, fabric numbers, and a reference to which fabrics go with the Templates and (TLS) to complete Units B1, B2L and B2R. This table is your guide for not only selecting your own colors, but keeping you organized. Don't forget to cut a swatch of your chosen fabric to paste in the box in the Assigned Colors column! The color layout below gives you a graphical representation of where each fabric should go in the quilt.

► Color Layout



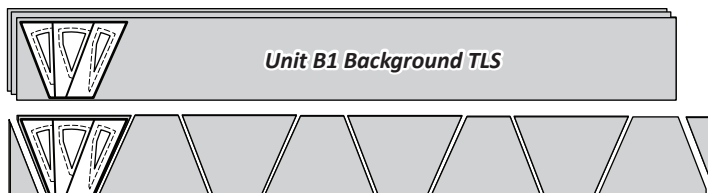
Units B1 and B2L/B2R Yardage, Make (16) B1 and (8) Each of B2L/B2R

GROUP-B FABRIC #	YARDAGE INCH	ASSIGNED COLOR
Fabric B1 Unit B1 Background (TLS)	3/8 yd or (10-1/2")	Fabric Swatch
Fabric B2:a Unit B1 Accent (Temp B1-2)	1/4 yd or (5")	Fabric Swatch
Fabric B2:b Unit B1 Accent (Temp B1-4)	1/4 yd or (5-1/2")	Fabric Swatch
Fabric B3 Unit B2L, B2R Background B2 (TLS)	1-3/8 yd or (49-1/2")	Fabric Swatch
Fabric B4:a Unit B2L, B2R Accent (TLS)	1/4 yd or (8-3/4")	Fabric Swatch
Fabric B4:b Unit B2L, B2R Accent (TLS)	1/4 yd or (8-3/4")	Fabric Swatch

► Fabric B1: (TLS) Unit B1

Step 1: Cut and stack **(2)** 5-1/4" by 42" strips facing *right-side up*.

Step 2: The *Unit B1 Background Template Layout Sheet* is placed onto the strips as shown. Cut **(16)** pieces, matching the size and shape of the Template Layout Sheet.



Step 3: Eight (8) pieces are stacked under each TLS. A paper clip secures the fabric the templates during cutting.

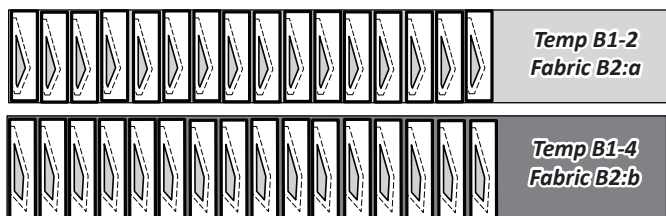
Step 4: Slice through the paper on each cut line to separate the individual sections. Place the individual template pieces clipped to the fabric with the **Unit B1 Foundation Papers** in Bag #B1.



► **Fabric B2:a and B2:b: (Temp B1-2 & B1-4) Unit B1**

Step 1: Cut and stack (1) 5" by 42" strip facing *right-side up* from Fabric B2:a and (1) 5-1/2" x 42" strip from Fabric B2:b.

Step 2: The **Unit B1 Accent Templates B1-2** is used to cut (16) pieces from Fabric B2:a and the **Unit B1 Accent Template B1-4** is used to cut (16) pieces from Fabric B2:b.

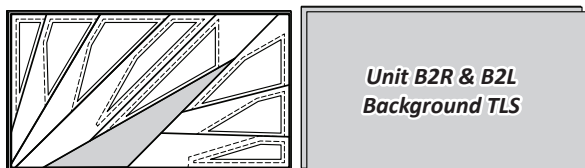


Step 3: The template pieces are divided by color into (4) stacks of (8) pieces. Clip the fabric and templates together, then place the pieces with the **Unit B1 Foundation Papers** in Bag #B1.

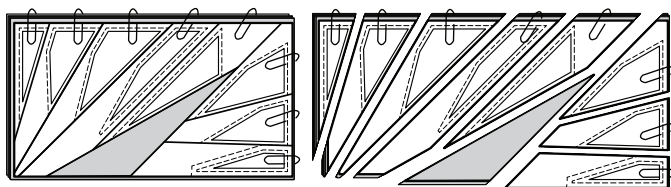


► **Fabric B3: (TLS) Unit B2L and B2R**

Step 1: Cut and stack (4) 12" by 42" strips facing *right-side up*. The **Unit B2 Background Template Layout Sheet** is used to cut (8) pieces.



Step 2: The (8) pieces are stacked under the TLS. Use paper clips to secure the fabric to the TLS on each section before cutting. Slice through the paper on each cut line to separate each template.



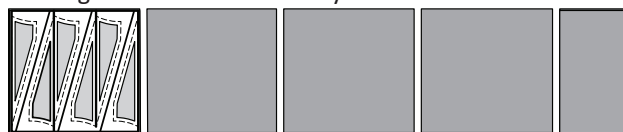
Step 3: The B2L Template pieces go with the **Unit B2L Papers** in Bag #B2. The B2R Template pieces go with **Unit B2R** in Bag #B3.

► **Fabric B4:a and B4:b: Spike (TLS) Unit B2L and B2R**

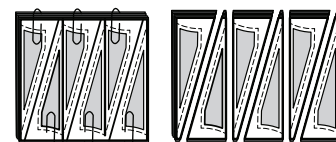
Step 1: Cut and stack (1) 8-3/4" by 42" strip facing *right-side up* from each Fabric B4:a & B4:b.



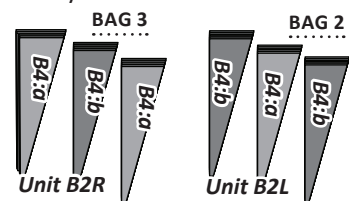
Step 2: The **Unit B2L and B2R Spike (TLS)** is used to cut (4) pieces measuring the same size as the layout sheet from each color.



Step 3: The (8) pieces are then layered and stacked together under the Template Layout Sheet, starting with the pieces cut from Fabric B4:b on the bottom, leaving the B4:a pieces on the top. The cutting is completed by slicing through the paper on each cut line to separate the individual sections.

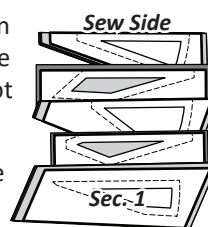


Step 4: The fabrics are now sorted by color into three stacks of (8) pieces. Each stack is clipped together with one paper template. The fabric are divided into two groups. Place the pieces back into with the associated Foundation Papers for each Unit B2L & B2R.



STACKING: UNIT B1 BAG B1

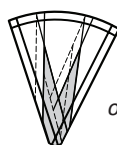
Position the templates and fabric pieces in numerical order facing *right-side up*, with the *sew-sides* aligned at the top. Sec. 1 does not have a sew side.



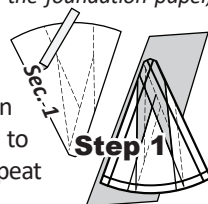
Stacking: The stacking process begins with the largest Sec. # on the bottom. The pieces are stacked in reverse order finishing with Sec. 1 on top.

FOUNDATION PAPER PIECING: UNIT B1

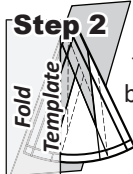
NOTE - Tracing the Dashed Lines: Place the foundation paper onto a light table. Flip the foundation paper over and trace the dashed lines printed on the front side of the foundation paper, onto the backside of the paper.



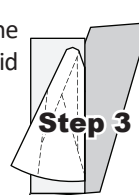
Step 1: The first piece of fabric is placed *wrong-side-up* on your table. Lift the foundation paper, slide the fabric under Sec. 1. Glue is used to adhere the fabric to the backside of the paper. Repeat Steps 1 and 2 for each foundation unit.



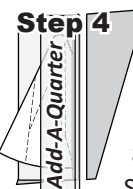
Step 2: Place the fold template over the top of Sec. 1. Line the edge up with the solid black line marked Line 1.



Step 3: Fold the paper back over the top of the fold template.



Step 4: Place the **Add-A-Quarter** ruler next to the folded paper and trim the fabric with your rotary cutter.



Step 5: Place the fabric piece for Sec. 2, *right-side up* next to the folded back paper. Lift the paper, and slide the fabric under Sec. 1, line the sew-side up with the trimmed seam allowance. Repeat **Steps 1-5** for each foundation paper before moving onto Step 7.

