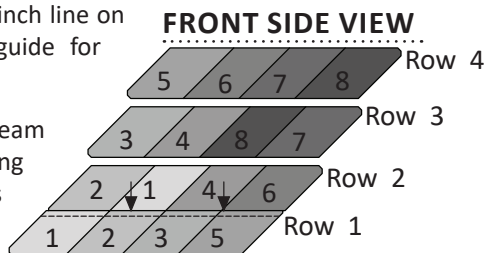
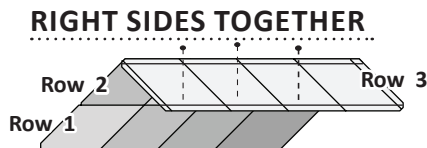


**Step 4:** At your machine, place Row-1 on the bottom next to the feed dogs, leaving Row-2 on top. Both strips are sewn together using the quarter-inch line on the paper as a guide for stitching.

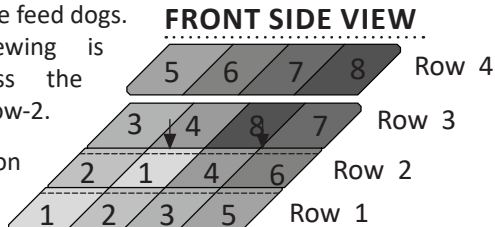


**Step 5:** The seam is pressed facing towards Row-1 as shown with the arrows.

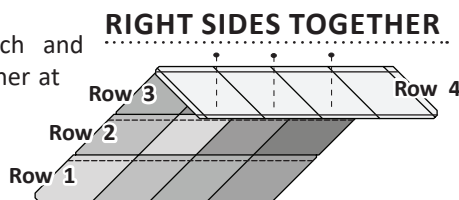
**Step 6:** Position Row-3 onto the top of Row-2 with right-sides-together. Match and pin both pieces at each quarter-inch intersection.



**Step 7:** Once again, remove the foundation papers under Row-2 without disturbing the pins. Sew both strips together, position Row-2 next to the feed dogs.

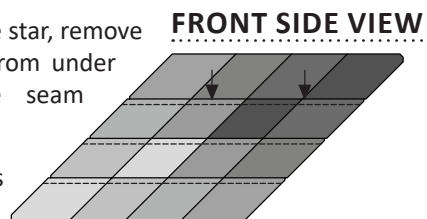


**Step 8:** Position Row-4 onto the top of Row-3 with right-sides-together. Match and pin both pieces together at each cross-section.



**Step 9:** Remove the foundation papers from under Row-3 without disturbing the pins. Sew both strips together with Row-3 next to the feed dogs. Press the seams toward Row 3.

**Step 10:** To finished the star, remove the foundation papers from under Row-4 and press the seam towards Row-3.



**Bags 2-6:** Repeat Steps 1-10 for Bags 2 to 6.

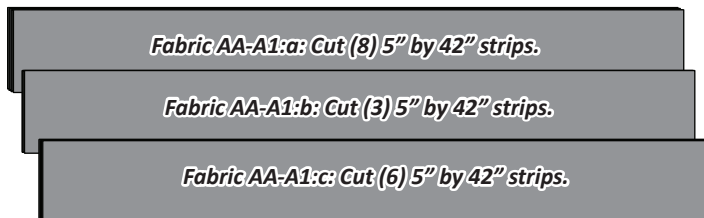
## CUTTING: BAG #7: SASHING

### ► Option 1, Fabric AA-A1:a, AA-A1:b, AA-A1:c

In the Fabric Chart on Page 5 under Option 1, Fabric AA-A1:a, AA-A1:b & AA-A1:c it told you how many 5" by 42" strips to cut from each fabric. These fabrics should have been cut and placed in Bag #7. If you have not cut these strips please do so at this time.

- Fabric AA-A1:a: Cut (8) 5" by 42" strips.
- Fabric AA-A1:b: Cut (3) 5" by 42" strips.
- Fabric AA-A1:c: Cut (6) 5" by 42" strips.

**Step 1:** Stack the strips in each color family facing *right-side-up*.



**Step 2:** Each 5" x 42" strip yields (3) 5" x 14" rectangles. The strips are now sub-cut into the following pieces.

- Fabric AA-A1:a: Subcut (24) 5" by 14" rectangles.
- Fabric AA-A1:b: Subcut (8) 5" by 14" rectangles.
- Fabric AA-A1:c: Subcut (16) 5" by 14" rectangles.



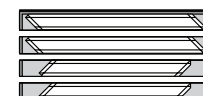
**Step 3:** Fabric AA-A1:a: Count and stack (8) fabric pieces under the (3) T-Template Layout Sheets T-TLSs shown below. Trim the excess fabric around the perimeter of each T-TLS to ensure the proper width. Large paper clips are used to secure the T-TLS to your fabric before you cut. Use your rotary cutter to separate the templates on Cut Lines 1 through 3. Trim the shaded area of the paper and excess fabric away along both ends to complete the cutting for the length. Then, trim the smart corners. Accurate trimming is necessary to preserve the Smart Corners. Place the pieces with each T-Template into the Bags as noted below.

**NOTE - Study the T-TLSs:** The T-TLSs for the sashing strips are not all the same. The T-TLSs used to cut the sashings for Bags #AA-1, AA-4, AA-5, & AA-6 are mirror images of the layout sheets used to cut the pieces in Bags #AA-2 & AA-3. \*Refer to the graphics before you begin to cut.

#### ► T-Templates AA-1A, to AA-4A

Fabric AA-A1:a  
Stack (8) Rectangles  
Right-Side-Up

T-TLS=AA-1A to AA-4A



Place these pieces with the Diamonds in Bag #AA-1

#### ► T-Templates AA-1B to AA-4B

Fabric AA-A1:a  
Stack (8) Rectangles  
Right-Side-Up

T-TLS=AA-1B to AA-4B



Place these pieces with the Diamonds in Bag #AA-3

#### ► T-Templates AA-1C to AA-4C

Fabric AA-A1:a  
Stack (8) Rectangles  
Right-Side-Up

T-TLS=AA-1C to AA-4C



Place these pieces with the Diamonds in Bag #AA-4

#### ► T-Templates AA-1B to AA-4B

Fabric AA-A1:b  
Stack (8) Rectangles  
Right-Side-Up

T-TLS=AA-1B to AA-4B



Place these pieces with the Diamonds in Bag #AA-2

**Step 4:** Fabric AA-A1:b: Stack (8) pieces under the T-TLS shown to the right. Trim the excess fabric from around the edges of each T-TLS. Cut on Lines 1-3 to separate the individual templates. Trim the shaded area of the paper and excess fabric away along both ends to complete the cutting for the length. Then, trim the smart corners. Place the pieces cut with each (TLS) with their assigned bags.