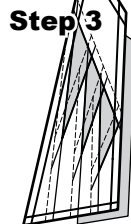
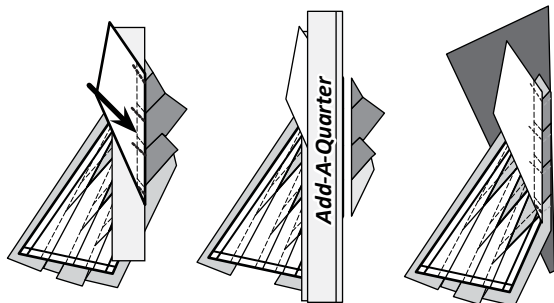


**Step 3:** Position the first piece of fabric for Sec. 1 *wrong-side-up* on your table. Lift the foundation paper, slide the fabric under Sec. 1 and glue the fabric to the backside of the paper. Steps 2 and 3 are repeated for each foundation unit.



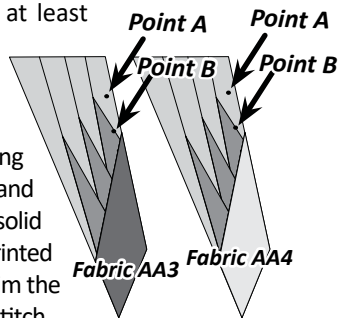
**Repeat the Previous Steps:** Continue adding the fabric pieces to each Sec #2-6.

**Line 7:** When you get to Line 7, you will need to tear the paper back on each stitch line 1, 3, 5, & 6, before the paper will fold back for you.



**Sewing the Last Section:** If you used two fabrics for your stars, you will need to divide the Unit B pieces into two equal stacks. One stack is placed and sewn with each color. AA3 & AA4. When you are done sewing, the fabric must be pressed on the backside of the paper before you can continue with marking the registration point and trimming.

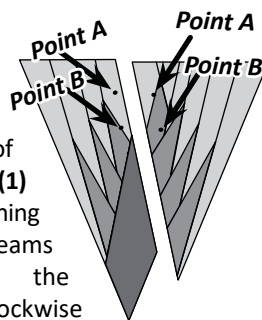
**Adding the Registration Points:** Along the right edge (from the front of the unit) of IC Unit B there are two points on the paper labeled as A and B. (See Graphic below). These points are commonly referred to as Registration points on our patterns. They are important for sewing the snowflake together as it can be very hard to line the snowflake pieces up perfectly. You can either mark these with a pen or pencil before removing the papers. Or, you can sew a basting stitch through them. Start at the edge, and sew perpendicular to the edge on the foundation paper, through the point about 1 inch. You will be using a basting stitch, so be sure to set your stitch length to at least 2.8, which will make it easy to remove the basting stitch once all the pieces are sewn together.



**Trimming:** When the paper piecing is completed, the excess paper and fabric is trimmed off on the dark solid line around the perimeter of the printed paper for each unit. This will also trim the threads if you have sewn a basting stitch.

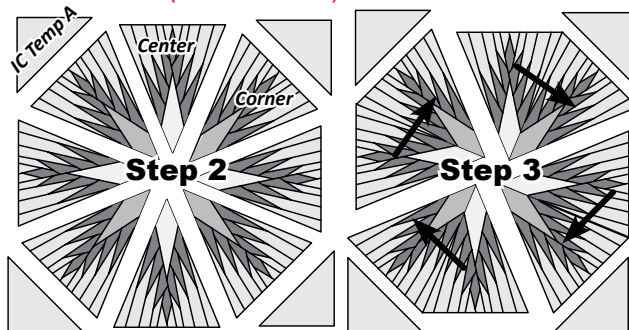
## ASSEMBLE THE SNOWFLAKE BLOCK

**Step 1:** If you have not done so already, transfer the registration points printed on the paper onto your fabric. Then remove the foundation paper from the backside of each unit at this time. Pair (1) Unit A and (1) Unit B block. Sew them together matching Point A and Point B on each. Press the seams counter-clockwise on the **backside** of the fabric (Clockwise on the front as shown by the arrow to the left) as you sew each seam. This would mean you press all the seams towards Unit A.



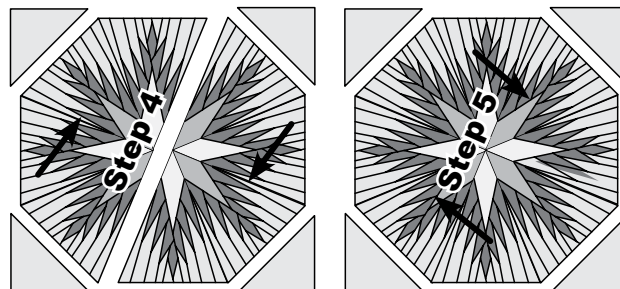
**Step 2:** Arrange the pieces as shown below, **right-side-up** on your table.

**Step 3:** Join (2) Snowflake Groups, (4) times, and press the seams clockwise (from the front).



**Step 4:** The corner groups are joined to complete two half pieces.

**Step 5:** The halves are joined to complete the Octagon.



**Step 6:** IC Template A is added to complete the square.

**Pressing the last seam:** When the blocks are completed, pick back the stitches at the intersection in the center of each star, twist the seams in opposing directions to complete the pressing on each block.

