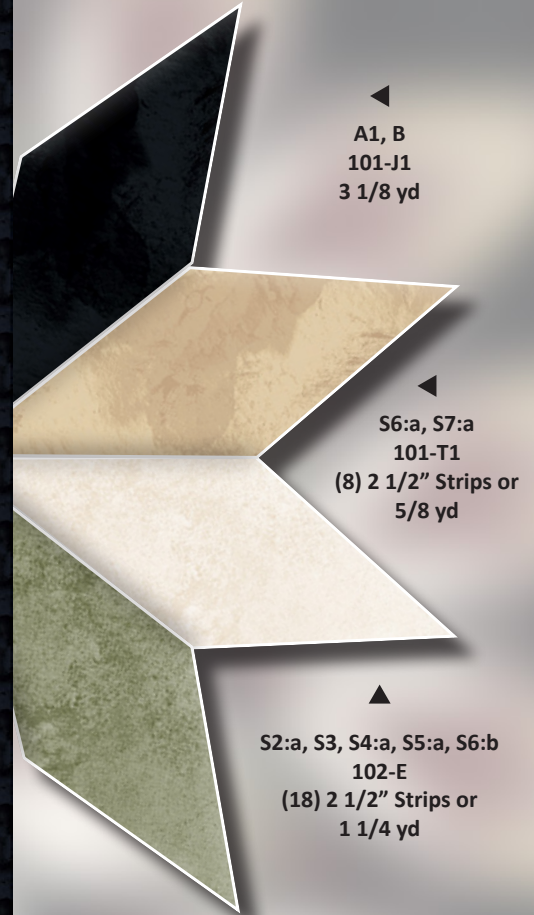


Prismatic Star

64" x 64"



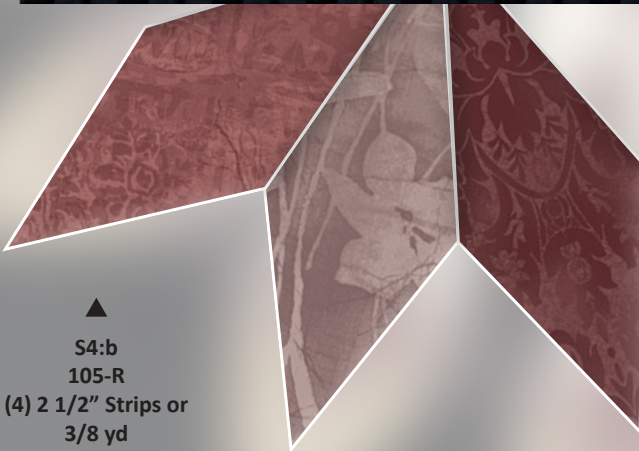
▲
A1, B
101-J1
3 1/8 yd

▲
S6:a, S7:a
101-T1
(8) 2 1/2" Strips or
5/8 yd

▲
S2:a, S3, S4:a, S5:a, S6:b
102-E
(18) 2 1/2" Strips or
1 1/4 yd

▲
S2:b, S7:b
102-G
(4) 2 1/2" Strips or
3/8 yd

Backing: 4 yd • Binding: 101-J1, 5/8 yd



▲
S4:b
105-R
(4) 2 1/2" Strips or
3/8 yd

▲
S1, S8:a
103-R
◀ (8) 2 1/2" Strips or
5/8 yd

▲
S5:b, S8:b
104-P
(8) 2 1/2" Strips or
5/8 yd

Quiltworx.com
July Niemeyer Quilting

E-mail: info@quiltworx.com

Website: www.quiltworx.com

Visit us on:

