

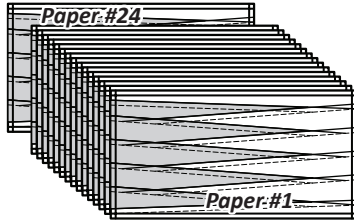
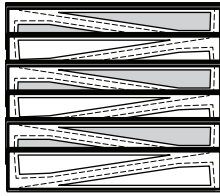
STACKING UNIT A

Sort the pieces for Units A in numerical order. You should have (12) fabric pieces beneath each template. Position the templates and fabric pieces facing *right-side-up*, with the *sew-sides* aligned at the top. Sec. 1 does not have a sew side.

► Stacking

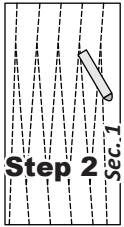
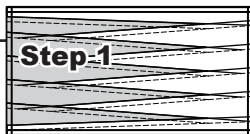
The stacking process begins with an Accent Fabric (identified by hatching on cutting template) on the bottom, then alternating with the background (no hatching), ending with a background strip on top.

At this point, stack and number your foundation papers, 1 to 24. A small swatch of fabric glued to each paper for the fabric to be used as the accent and background fabrics on that unit will help to make sure you are sewing the correct fabric to all of the units, especially if you are using lots of different fabrics in your project.



PAPER PIECING UNIT A

Step 1: Place Unit A *right-side-up* onto your table.



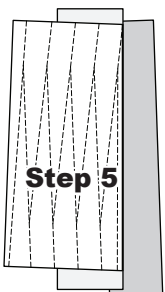
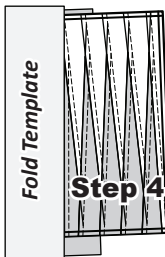
NOTE - Tracing the Dashed Lines: Place the foundation paper onto a light table. Flip the foundation paper over and trace the dashed lines printed on the front side of the foundation paper, onto the backside of the paper.

Step 2: Find Sec. 1 on the foundation paper. Place a small amount of fabric glue on the *backside* of the paper under Sec. 1.

Step 3: Position the first piece of fabric (cut from Background) for Sec. 1 *wrong-side-up* on a table. Lift the foundation paper, slide the fabric under Sec. 1 and glue the fabric to the backside of the paper. Steps 2 and 3 are repeated for each unit before moving onto Step 4.



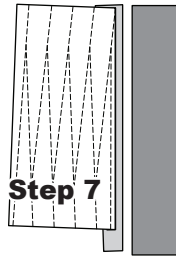
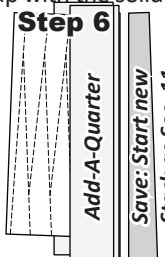
NOTE - Fabric Placement: Make sure the first piece you add is a BACKGROUND Fabric and the wrong-side of the fabric is against the backside of the paper. It also must extend beyond the edges of the dashed lines to cover the underneath side of Sec. 1. Make sure that the top of the strip piece and the left edge are just barely extending beyond the edge of the paper. The trimmed away piece must be used to sew the last piece to the unit (Section 11) so you need to have enough fabric left after trimming to cover that section.



Step 4: Place the fold template over the top of Sec. 1. Line the edge up with the solid black line marked Line 1.

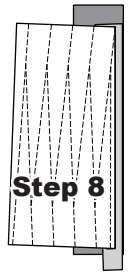
Step 5: Then, fold the paper back over the top of the fold template.

Step 6: Place the *Add-A-Quarter* ruler next to the folded back section lip-side down and trim the fabric with your rotary cutter. Place the excess in a new stack, reserved for Sec. 11. The cut edge is your sew side.



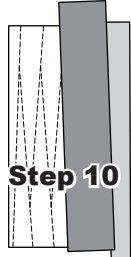
Step 7: Place the fabric piece for Sec. 2, *right-side-up* next to the folded back paper as shown.

Step 8: Lift the foundation paper, slide the fabric under Sec. 2 lining the sew-side up with the trimmed seam allowance. Make sure the fabric extends beyond the boundaries of the dashed lines for Sec. 2.

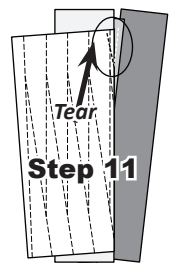


NOTE - Chain Piecing: Repeat Steps 4-8 for each foundation paper before moving onto Step 9.

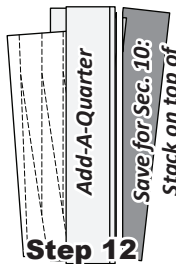
Step 9: Sew on Line 1. The stitches should start and stop along the edge of the paper. Starting and stopping just past the end of each line makes it possible to cut the thread ends off when you trim your papers. Complete the sewing on each Unit before moving onto the next step.



Step 10: Loosen the glue under Sec. 1. Then press the fabric on the backside of each paper.



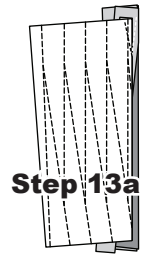
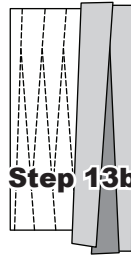
Step 11: Position the fold template over the top of Sections 1 and 2, lining the edge up with Line 2. Fold the paper back and tear the paper along the stitch line, stopping once you hit the fold template. This allows the fabric to lay flat against the table, making it possible to trim with the *Add-A-Quarter* ruler.



NOTE - Tearing along the Stitches: Each time you trim with the *Add-A-Quarter* ruler you must tear the paper along the stitch line with in the seam allowance area. You need to become very comfortable with the process of folding back the paper, tearing, and trimming.

Step 12: Trim the fabric with the *Add-A-Quarter* ruler. Place the excess fabric (for Sec. 10) on top of the excess set aside for Sec. 11. **The opposite side of the trimmed edge is your sew side.**

Step 13: Place the fabric for Sec. 3 next to the unit, then slide it underneath. Repeat this process for all units, then take to your machine and sew on Line 2 for each unit. Open up and press them all open before moving to adding Section 4.



Step 14: When trimming the fabric for Sec. 3, place the excess on top of the fabric trimmed in Step 12 for Sec. 10, *right-side-up* and with the **opposite edge to the trimmed edge** as the sew side to be sewn to Section 9.

- Then, sew on the fabric for Sec. 4.
- The Section 4 fabric will be trimmed and the excess will be used for Section 8.
- Sew on the fabric for Section 5.
- When trimming Section 5, the excess fabric will be used for Section 7.
- Sew on the fabric for Section 6.
- The excess from the fabric for Sec. 6 will not be used.

Remember, when stacking the fabrics for Sections 7 to 11, **that the opposite edge to the one you just trimmed is the sew side!**