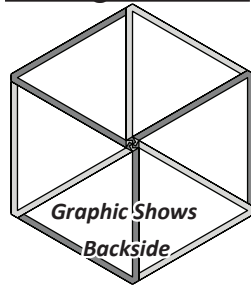


Pressing the Center Star:

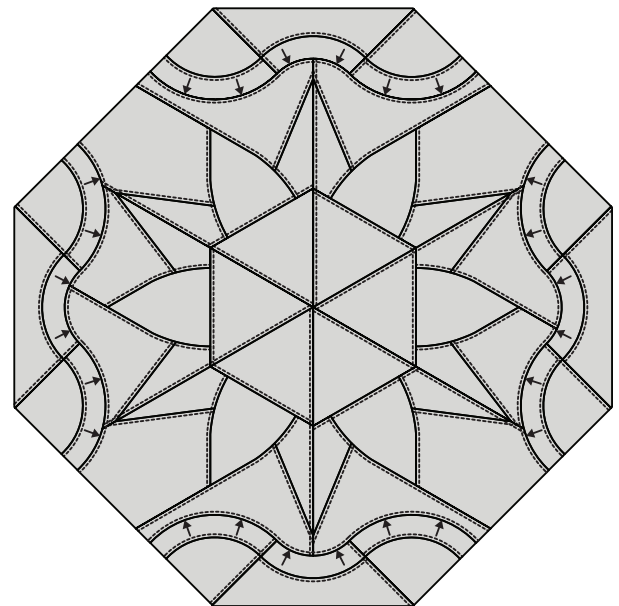
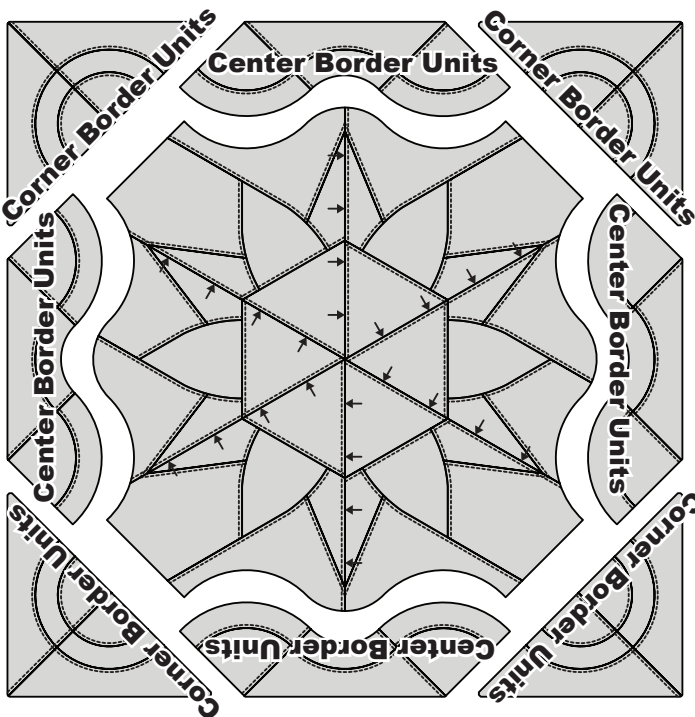
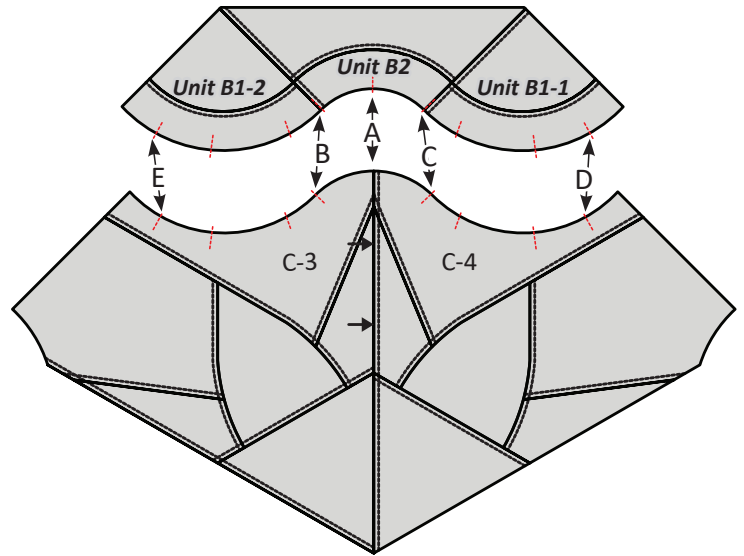
Press the seams as shown in the graphic. Pick back a few stitches on each intersecting seam, then press the pieces in a fan rotating counter clockwise on the back side of the quilt.

Pressing the Center



► Borders

Step 8: Position the border pieces around the Center of the Quilt as shown. The center border units are sewn onto the quilt first. The curved piecing is a three part process. The curved seam for Unit B2 is the first curved seam sewn onto the quilt, following with Unit B1-1 and Unit B1-2. All **four** Center Border Units are sewn before adding the corners.



Step 9: Place Unit B on the top of the C3 & C4 templates. Match and pin the TRP Lines, with right-sides together at Point A, B and C. Glue the raw edges together between Point B and C. Once the edges are secure, a quarter inch seam is sewn starting at point B and stopping at Point C.

Step 10: The pieces are flipped over now so Unit B1-1 is on the bottom. Match and pin the (3) TRP lines between Unit B1-1 and T-Temp C4. **Secure the edges with a little glue. The sewing starts at the edge, then match at Point D and finish at Point C.**

Step 11: Match and pin the (3) TRP lines between Unit B1-2 and T-Temp C3. Secure the edges with a little glue. **The sewing starts at Point B, match along the way, then sew through Point E and finish it to the edge.**

Step 12: Repeat the previous steps for each of the Center Border Units. The sewing order should start with the top, then move to the bottom, then complete the two sides. The seams are pressed towards the Center T-Templates on all four sides.

Step 13: The four corner groups are now sewn to complete the top.

