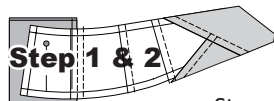
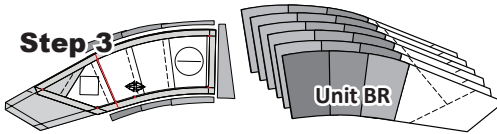


Step 2: The dashed line located next to Line 1 is lined up with the edge of both fabric strips. The sewing begins with the first foundation paper and ends with the sixth piece of paper on each strip set.

Step 3: The strip piecing for Unit BR, follow the previous Steps 1-14 for Unit AL. You will need to complete the trimming in Step 14 (with the Creative Grids Rulers, use Template L) to prepare your papers for the *DWR Background T-Template C*.

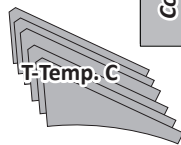


Step 3: The strip piecing for Unit BR, follow the previous Steps 1-14 for Unit AL. You will need to complete the trimming in Step 14 (with the Creative Grids Rulers, use Template L) to prepare your papers for the *DWR Background T-Template C*.

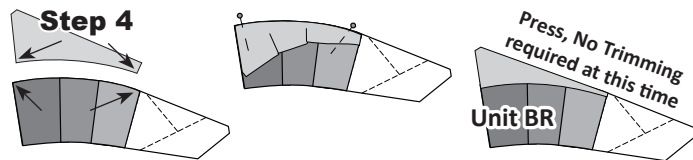


Center Background Template: The (6) pieces cut with *DWR Background T-Template C* are now sewn onto the foundation papers.

Step 4: Locate the 1/4 inch intersecting points on both pieces. Position the pieces cut from *T-Template C* onto the top of Unit-BR, with *right-sides-together*. Match the Smart Corners at both ends then glue the edges along the curve.

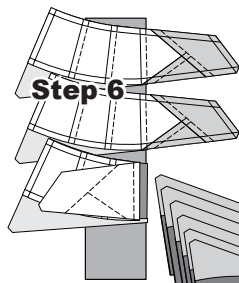


Step 5: Position both pieces at your machine. Place Unit BR, *paper-side-down*, next to the feed dogs when sewing the (2) pieces together. After the curved piecing is completed, the fabric is pressed toward *T-Temp C*.



► The Strip Piecing Continues with Strip #4

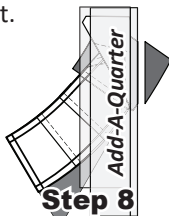
Step 6: The papers are positioned onto Strip #4, (*Color 1*) as shown in the graphic to the left.



Step 7: When the strip piecing is done, press the fabric open on the backside of the paper and cut the units apart.

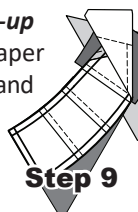


Step 8: Reposition the foundation units with the *paper-side-up*. Place the Fold Template on Line 4, fold back the paper and trim a quarter-inch seam.



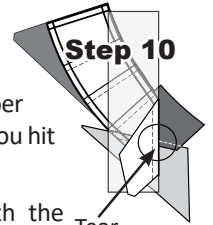
► Wings, Template A-1, Fabric S9

Step 9: Place the fabric piece for Sec. 5, *right-side-up* next to the folded back paper. Lift the foundation paper and slide the fabric under Sec. 2. Open the paper and sew on Line 3. The stitches should start and stop at the edge of the paper. Press the fabric pieces open on the backside of the paper.

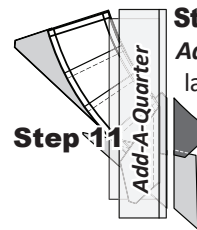


► Star, Template B-1, Fabric S11

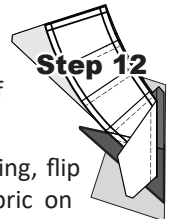
Step 10: Reposition the foundation units with the *paper-side-up*. Line the ruler up with Line 5. Fold the paper back and tear the paper along the stitches on Line 5. Stop tearing when you hit the fold template.



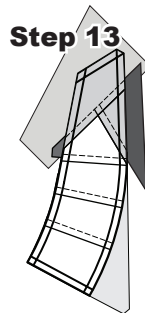
Step 11: Trim the fabric with the *Add-A-Quarter* ruler, position the last piece of fabric *right-side up* next to the paper. Lift the paper and slide the fabric under Sec. 3 in position.



Step 12: Open the paper and sew on Line 4. The stitches should start and stop at the edge of the paper.

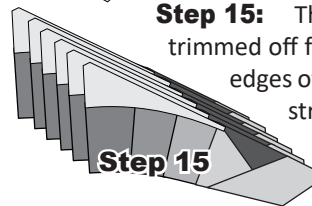


Step 13: When you are done sewing, flip the papers over and press the fabric on the backside of the paper. Then sew each *TRP Line* with a basting stitch length 2.8.



Step 14: Sew each *TRP Line* with a basting stitch length 2.8.

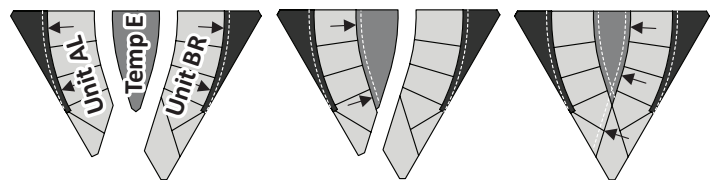
Step 15: The excess fabric is trimmed off from around the outer edges of Sec 5 & Sec. 6 using a straight edge ruler. Line it up with the straight edge of *T-Template C*.



► Assemble Unit AL, T-Template E & Unit BR

Step 1: Remove the foundation paper from the backside of each Unit AL & BR.

Step 2: Remove the Center Background Template pieces cut with *DWR Background T-Template E* from Bag AL/BR. You should have (6) pieces.



Step 3: Arrange the units as shown above. Position Unit AL onto the top of the pieces cut from *T-Template E*, with *right-sides-together*. Match and pin the pieces at both ends. Glue the raw edges along the outside curved edge and sew the pieces together with a quarter-inch seam allowance.

Step 4: Press seams towards *T-Template E*.

Step 5: Position Unit BR, onto the top of Unit AL/T-Temp E with *right-sides-together*. Match and pin the pieces at both ends. Glue the raw edges along the outside curved edge and sew the pieces together with a quarter-inch seam allowance.

Step 6: Press seams towards *T-Template E*.

Step 7: After the curved piecing is completed, the fabric is pressed as shown. Place these units back into their respective bag for now.