

Color 4 is Facing Wrong-Side Up

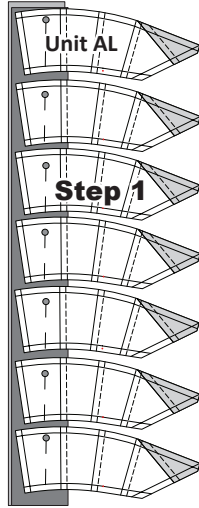
Color 3 is Facing Right-side Up

► Unit AL:

Position Strip #1, (Color 4) and Strip #2, (Color 3) right-sides-together on your table. (Color 4) is on the top.

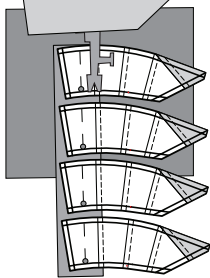
Step 1: Position the foundation papers for Unit AL *right-side-up* onto the *wrong-side* of Color 4. Center Sec. 1 over the fabric, lining up the dashed line located next to Line 1 with the raw edge of both fabric strips. Place a couple pins in each piece to secure the pieces before you sew.

Color 4 is Facing Wrong-Side Up



Step 2: Carry the strips and papers to your machine. Start sewing on Line 1, stopping just before you get to the bottom of the third piece.

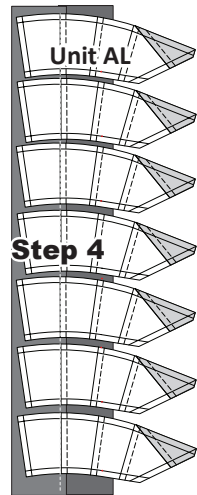
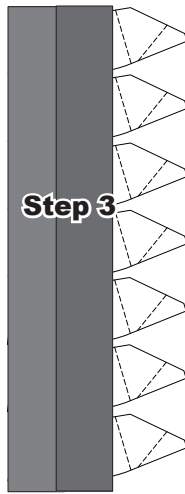
Step 2 Unit AL



Step 3: When you are done sewing, carry the strips and papers over to your ironing board. Position the paper face down. Finger press the seam open. Use a light steam iron and press keeping the strips straight as you press.

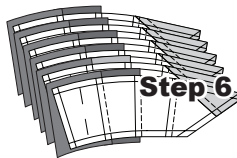
Step 4: Carry the papers and strips back to your cutting board. Position the fabric on the board with the paper side facing up.

Step 3



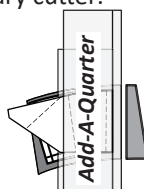
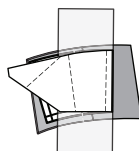
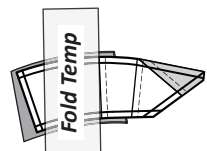
Step 5: Carefully cut between the foundation papers with your rotary cutter to separate each unit.

Step 6: Stack the pieces *paper-side-up*.



Step 7: Line the fold template up with Line 2 on the paper. Fold back the paper and trim the fabric with your rotary cutter.

Step 7



Step 8: After the trimming is completed with the *Add-A-Quarter* ruler, stack the units, leaving the papers in the folded back position.

Step 8

Step 9: Place Strip #3, (Color 2), *right-side-up* at your machine next to the feed dogs. Position the first arc onto the strip with the paper folded back as shown.

Step 10: Open the foundation paper on each piece, and sew on Line 2. Stop before you get to the end of the first paper and position a second unit onto the fabric strip.

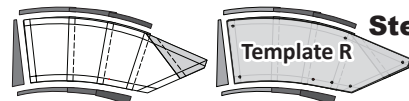
Step 11: When the sewing is completed, carry the papers and strips back to your cutting board.

Position the fabric on the board, *paper-side-up* and cut between the foundation papers with your rotary cutter to separate each unit. Stack the pieces *paper-side-up*.

Step 11

Step 12: Line the fold template up with Line 3 on the paper. Fold back the paper and trim the fabric with your rotary cutter.

Step 13: At this time the excess fabric is trimmed along the edges.



Step 13

Center Background Template: The (6) pieces cut with DWR Background T-Template D are now sewn onto the foundation papers.

Step 14: Locate the 1/4 inch intersecting points on both pieces. CGRDIA Templates were designed with drilled holes at each intersection.

Step 15: Position the pieces cut from Template D onto the top of Unit-AL, with *right-sides-together*. With the Smart Corners built into the template pieces you will find it easy to match and pin both ends. Glue the edges along the curve. The glue should only be added along the edge of the fabric, keeping the glue so it falls within the seam allowance area.

Step 16: Position both pieces at your machine. Place Unit-AL, *paper-side-down*, next to the feed dogs and sew the two (2) pieces together using a quarter-inch seam allowance. Press towards T-Temp D.

NOTE - Purple Thang: The Purple Thang works great as a third finger when sewing the curves. It can be used to smooth out any pleats you might run into and is very helpful in holding the fabric edges together as you complete your sewing.

Step 17: After the curved piecing is completed the fabric is pressed as shown. No trimming required.

