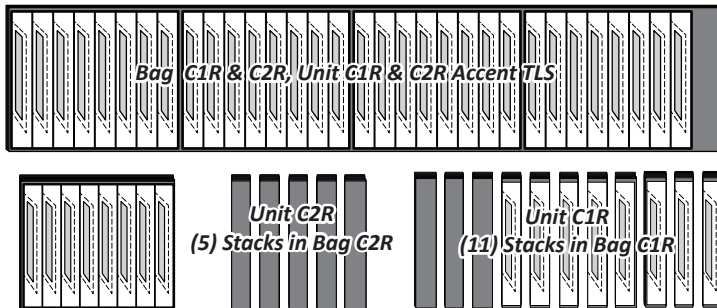
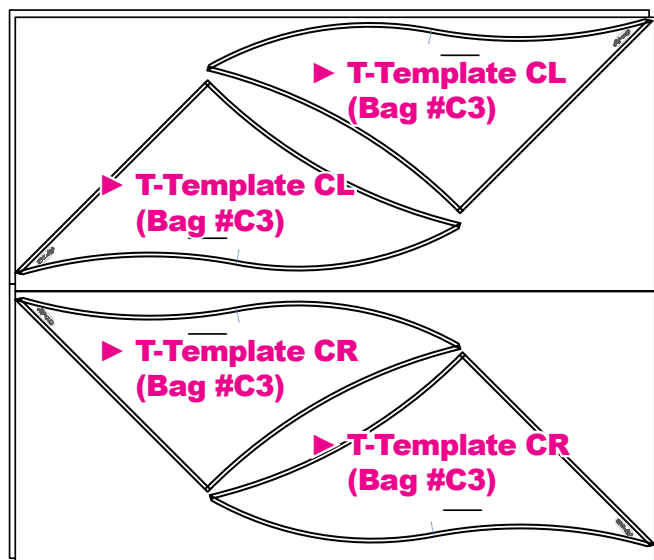


Step 5: Repeat that same process with the *Unit C1R & C2R Accent TLS* and the remaining (2) strips. Place (11) stacks of (4) into Bag #C1R and (5) stacks of (4) into Bag #C2R.

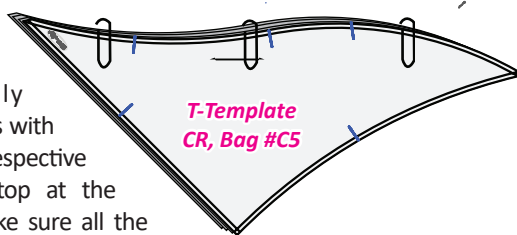


► **Fabric C3, T-Template CR & CL Cutting Graphics (Bag #C3)**

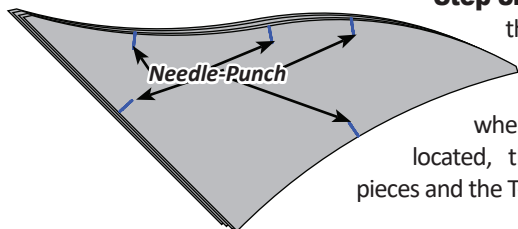
Step 6: From Fabric C3, cut (4) 18" x 42" strips. Stack the strips facing *right-side-up* into (2) stacks of two. Arrange the CR & CL templates as shown onto your stacks and cut (4) pieces for each template.



Step 7: Carefully restack the fabrics with each of the respective T-Templates on top at the machine and make sure all the sides are in line with the template. A few paper clips or binder clips will help hold everything in place. (Only one T-Template is shown in the graphics for illustrative purposes).

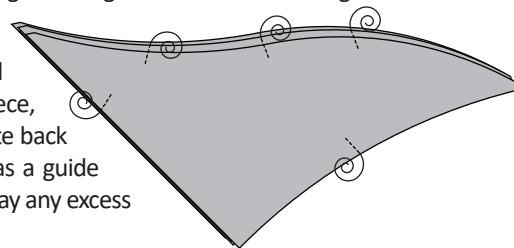


Step 8: Remove the thread from your machine and needle stitch where the TRP Line is located, through all of the pieces and the T-Template.



Step 9: Then, remove the T-Template, replace the thread, and on each fabric piece, sew over the needle-punched holes to add the registration line using a basting stitch with a stitch length of 2.8.

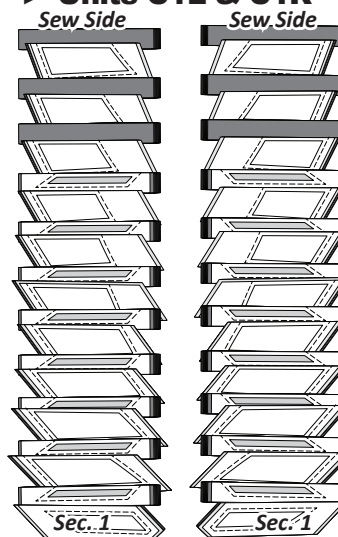
Step 10: When you have finished marking each piece, place the T-Template back on top and use it as a guide to carefully trim away any excess threads.



Step 11: Clip the stack together and place into Bag #C5.

■ **SORTING AND STACKING UNITS C1L & C1R, BAGS #C1L & #C1R**

► **Units C1L & C1R**



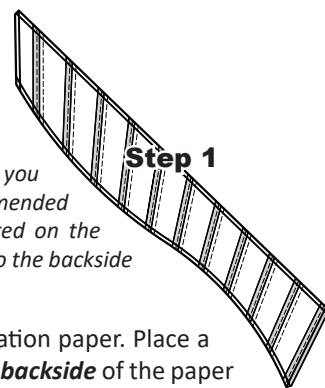
Sort the pieces in Bags #C1L and #C1R on your table with the templates and fabric pieces facing *right-side-up*. The sew sides are aligned along the top of your stack. The stacking begins with the *CR-Strip & CL-Strip Temps.* for Sec. 22 on the bottom. The pieces are then stacked in reverse order, finishing with the template pieces for Sec. 1 on top.

■ **FOUNDATION PAPER PIECING: UNIT C1L, BAG #C1L**

NOTE - Graphics Shown are for Unit C1L.

Step 1: Place Unit C1L *right-side-up* onto your table.

NOTE - Tracing the Dashed Lines: If you are new to paper piecing it is recommended that you trace the dashed lines printed on the front side of the foundation paper, onto the backside of the paper.



Step 2: Find Sec. 1 on the foundation paper. Place a small amount of fabric glue on the *backside* of the paper under Sec. 1.



Step 3: Position the first piece of fabric for Sec. 1 *wrong-side-up* on your table. Lift the foundation paper, slide the fabric under Sec. 1 and glue the fabric to the backside of the paper. Steps 2 and 3 are repeated for each foundation unit before moving onto Step 4.

