

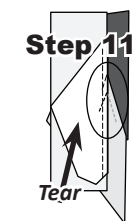
Step 8: Lift the foundation paper and slide the fabric under Sec. 2. Line the sew-side up with the trimmed quarter-inch seam allowance. Make sure the fabric extends beyond the boundaries of the dashed lines for Sec. 2. Repeat Steps 4-8 for each foundation paper before moving onto Step 9.



Step 9: Sew on Line 1. The stitches should start and stop about 1/8" past the beginning and the end of each stitch line. Complete the sewing on each Unit before moving onto the next step.

NOTE - Trimming the Threads: Sewing past the ends of the sew line allows for cutting the thread ends off each time you trim with your Add-A-Quarter ruler.

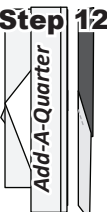
NOTE - Before you Press: Loosen the glue under Sec. 1. This should be done before you press.



Step 10: Flip the papers over, press the fabric pieces open on each paper.

Step 11: Position the fold template over the top of Sections 1 and 2, lining the edge up with Line 2 and fold back the paper.

Step 12: Trim the fabric with the Add-A-Quarter ruler.



Step 13: Position the third fabric piece next to Sec. 3.

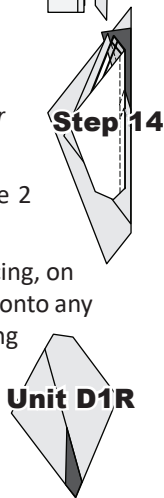
Step 14: Slide the fabric under Sec. 3. Line the sew-side up with the raw edge of the trimmed quarter-inch seams allowance.

NOTE - Chain Piecing: Repeat steps 11-14 on each paper before moving onto Step 15.



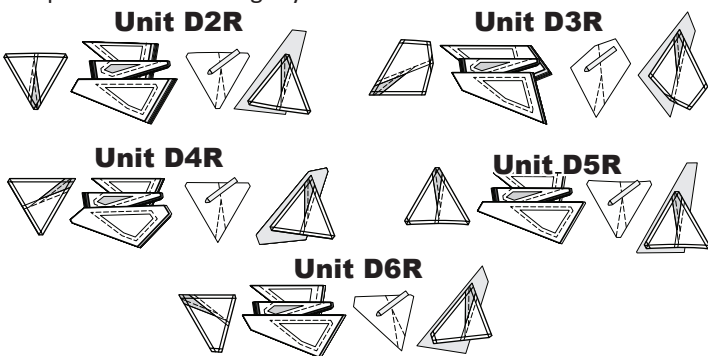
Step 15: Open the paper, sew on Line 2 and press.

Complete the foundation paper piecing, on each of the D1R Units before moving onto any other sub-bags. When the paper piecing is complete, trim away the excess fabric and paper using the exterior solid line on each foundation unit. Do not remove the paper at this time. Place everything back into Bag #D1R until you are ready to assemble Group D.



► Units D2R to D6R

The Unit D2R to D6R pieces are completed using the same piecing process as described for Unit D1R. A few graphics, including the original unit, stacking, and Steps 1 and 2 of the piecing directions are provided below to get you started.

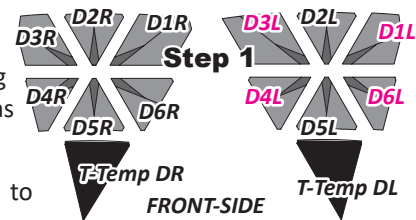


► Units D1L to D6L

The Unit DL subunits are pieced identical to Unit DR. The pieces are simply mirrored. No graphics are shown, but complete the stacking and sewing as described for Unit DR before moving to Group D Assembly.

GROUP D ASSEMBLY

Step 1: Remove the papers from the back of DL and DR units. Reference the General Instructions information if you are unsure of how to remove the papers. Place the pieces on a design wall (including T-Templates DL and DR) as shown.

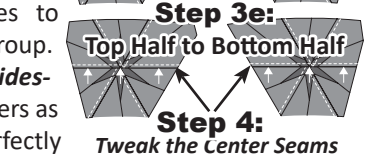


Step 2: Set your machine to sew a quarter-inch seam.

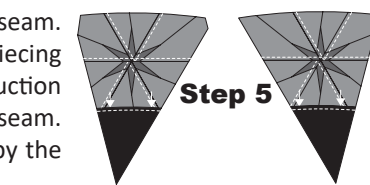
Step 3: Sew the sub-units for Unit DL and DR together using the steps shown to the right. Press the seams in the direction of the dashed lines and arrows.



Step 4: Tweaking the Center Seams: The center seam is split and pressed in opposing directions. You will need to pick back a couple stitches on each seam at the intersection where all the seams join before you can successfully press the seams in opposing directions.



Step 5: Add the T-Templates to the proper Unit DL and DR group. Place the pieces **right-sides-together**. Use the Smart Corners as your guide for how to perfectly position the two pieces together. Note the slight curve in the seam. Follow general curved piecing instructions in the introduction information to get the perfect seam. Press in the direction shown by the arrows below.



GROUP E: SHOOTING STAR, UNITS E1 & E2-E7 INSTRUCTIONS

Ziploc Storage Bags: You will need (7) bags to complete the organization for these instructions.

- Bag #E1: (8) Unit E1 Papers and Cutting Templates
- Bag #E2: (8) Unit E2 Papers and Cutting Templates
- Bag #E3: (8) Unit E3 Papers and Cutting Templates
- Bag #E4: (8) Unit E4 Papers and Cutting Templates
- Bag #E5: (8) Unit E5 Papers and Cutting Templates
- Bag #E6: (8) Unit E6 Papers and Cutting Templates
- Bag #E7: (8) Unit E7 Papers and Cutting Templates