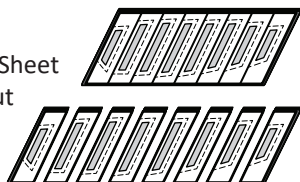


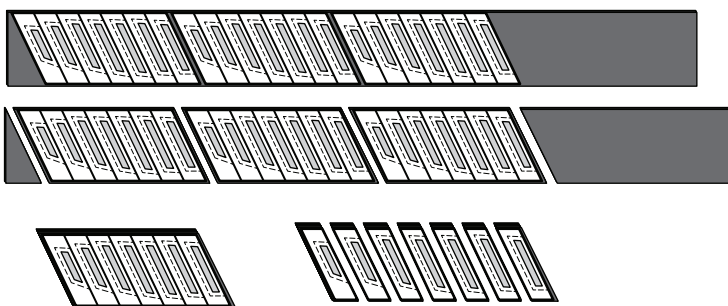
Step 4: Re-stack the (8) pieces right-side-up, then place the *Unit A2 Accent TLS* on top.

Step 5: Cut the Template Layout Sheet and fabric beneath apart on the Cut Lines. Move through the TLS in numerical order.



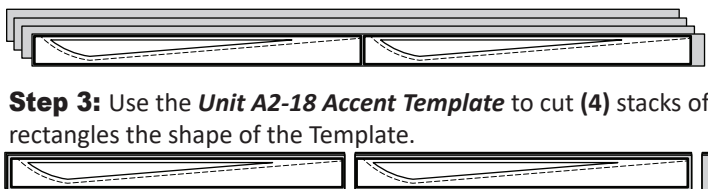
Step 6: Clip each Template to the fabrics beneath, then place the clipped stacks back into Bag #A2.

Step 7: Repeat this process with the second set of 4-1/2" strips and the *Unit A3 Accent TLS*. When the pieces have been cut apart and clipped, place the clipped stacks into Bag #A3.



► **Unit A2 Accent Fabric A11**

Step 1: Cut (4) 2" x 42" strips from Fabric A11.
Step 2: Place the strips into (1) stack, *right-side-up*, on a cutting table.



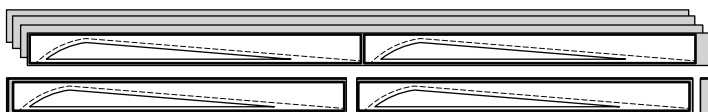
Step 3: Use the *Unit A2-18 Accent Template* to cut (4) stacks of rectangles the shape of the Template.



Step 4: Clip the rectangles together with the Template on the top and place these back into Bag #A2.

► **Unit A3 Accent Fabric A8**

Step 1: Repeat the same instructions for *Unit A3-16 Accent Template* and Fabric A8 as you just did for the *A2-18 Accent Template* and Fabric A11. When the strips are cut apart and clipped together, place the stack back into Bag #A3.

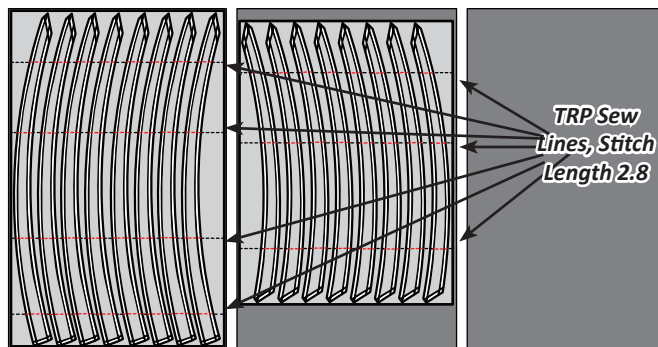


► **Unit A2 & A3 Accent Fabric A9**

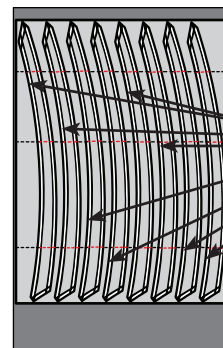
Step 1: Cut (1) 22-1/2" x 42" strip from Fabric A9.
Step 2: Place the *T-Template A2-19 Layout Sheet* and *T-Template A3-17 Layout Sheet* to cut a rectangle the size of each Layout Sheet. (Graphic at top of next column).

Step 3: Take each Layout Sheet and piece of fabric beneath to the sewing machine. Set your machine stitch length to a minimum of 2.8.

Step 4: Find the dashed lines that line up with the TRP lines across the sheet and sew down the length of the layout sheet along each line.



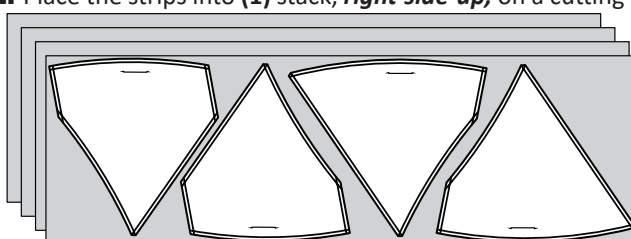
Step 5: Then, complete a rough cut between each T-Template on each sheet. You only need to trim the concave edge at this point. The rest will be trimmed later, after the pieces are sewn to the foundation paper. Place the trimmed pieces for Unit A2 into Bag #A2 and the pieces for Unit A3 into Bag #A3.



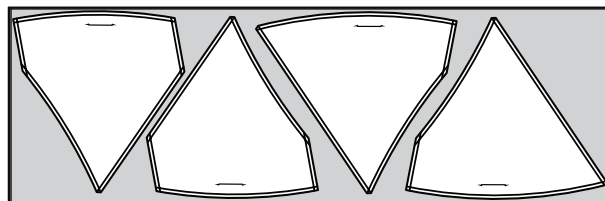
Trim the concave edge only, between each Template for both A2-19, and A3-17. Only A3-17 is shown.

► **T-Templates A-1 and A-2 Accent Fabric A12**

Step 1: Cut (4) 13-1/2" x 42" strips from Fabric A12.
Step 2: Place the strips into (1) stack, *right-side-up*, on a cutting table.



Step 3: Use the *T-Template A-1* and *T-Template A-2* to cut (2) stacks of pieces with each T-Template to the shape of each T-Template.



Step 4: Clip the pieces together with the T-Template on the top and follow the directions in the next section before placing these back into Bag #A5.

■ **ADDING REGISTRATION LINES (TRP) TO T-TEMPLATES A-1 TO A-2**

Step 5: Carefully place your stack of fabrics with the template on top at the machine and make sure all the sides are in line with the template. Remove the thread from your machine and needle stitch where each TRP Line is located. Then, remove the template, replace the thread, and on each template fabric piece, sew over the needle-punched holes to add the basting stitch. Use a stitch length of at least 2.8. Once they are marked, carefully trim away the excess threads, then clip them back together and place them back into Bags #A5.