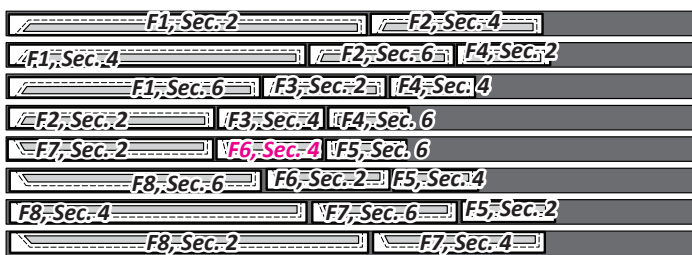
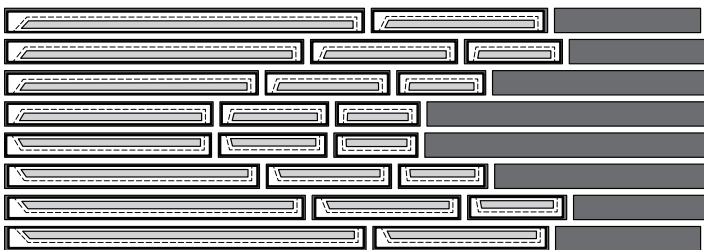


Step 3: Remove the Accent Strip Templates from the Bags and place them onto each 1-1/2" strip as shown.



Step 4: Cut between the strips, then clip each set of (4) strips together and place the template and strip pieces back into the respective bag (Unit F1 strips go into Bag #F1, Unit F2 strips go into Bag #F2, and so on).

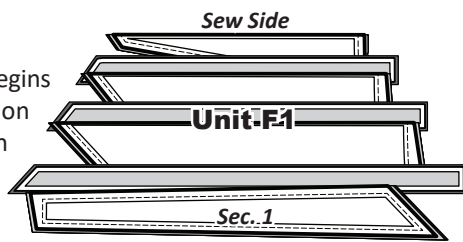


STACKING: BAGS F1 TO F8

Sort the pieces for each of the Units F1 to F8 in numerical order. You should have (4) fabric pieces beneath each template. Position the templates and fabric pieces facing *right-side-up*, with the *sew-sides* aligned at the top. Sec. 1 does not have a sew side.

Stacking

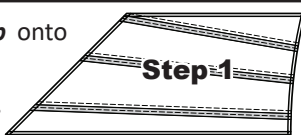
The stacking process begins with the last section on the bottom of each stack. The pieces are then stacked in reverse order finishing with Sec. 1 on top as shown. Unit F1 is shown for demonstration purposes. The remaining Units are done the same way but graphics are not shown.



FOUNDATION PAPER PIECING, BAG F1

Step 1: Place Unit F1 *right-side-up* onto your table and position as shown.

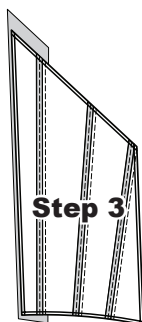
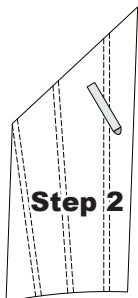
NOTE - Tracing the Dashed Lines: Place the foundation paper onto a light table.



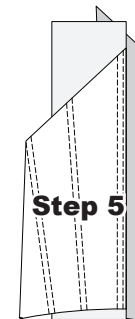
Flip the foundation paper over and trace the dashed lines printed on the front side of the foundation paper, onto the backside of the paper.

Step 2: Find Sec. 1 on the foundation paper. Place a small amount of fabric glue on the *backside* of the paper under Sec. 1.

Step 3: Position the first piece of fabric for Sec. 1 *wrong-side-up* on your table. Lift the foundation paper, slide the fabric under Sec. 1 and glue the first piece of fabric to the backside of the paper. Steps 2 & 3 are repeated for each foundation unit before moving onto Step 4.

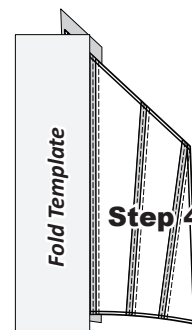


NOTE - Fabric Placement: The *wrong-side* of the fabric is against the backside of the paper. The fabric must extend beyond the edges of the dashed lines to cover the underneath side of Sec. 1.



Step 5

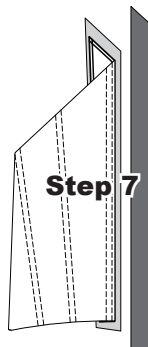
Step 4: Place the fold template over the top of Sec. 1. Line the edge up with the solid black line marked Line 1.



Step 4

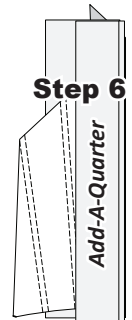
Step 5: Fold the paper back over the top of the fold template.

Step 6: Place the *Add-A-Quarter* ruler next to the folded back section lip-side down and trim the fabric with your rotary cutter. This leaves you with a quarter-inch seam allowance which, is lined up with the sew side on the next piece of fabric.



Step 7

Step 7: Place the fabric piece for Sec. 2, *right-side-up* next to the folded back paper as shown.



Step 6

Step 8: Lift the foundation paper and slide the fabric under Sec. 2. Line the sew-side up with the trimmed quarter-inch seam allowance. Make sure the fabric extends beyond the boundaries of the dashed lines for Sec. 2. Repeat Steps 4-8 for each foundation paper before moving onto Step 9.

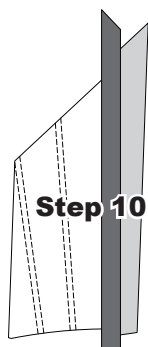


Step 8

Step 9: Sew on Line 1. The stitches should start and stop about 1/8" past the beginning and the end of each stitch line. Complete the sewing on each Unit before moving onto the next step.

NOTE - Trimming the Threads: Sewing past the ends of the sew line allows for cutting the thread ends off each time you trim with your *Add-A-Quarter* ruler.

NOTE - Before you Press: Loosen the glue under Sec. 1. This should be done before you press.



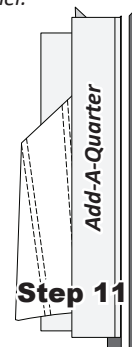
Step 10

Step 10: Flip the papers over, press the fabric pieces open on each paper.

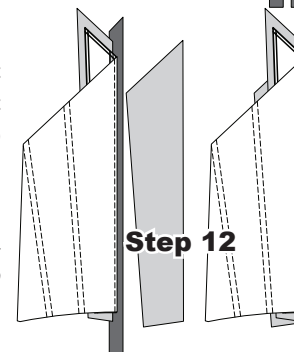
Step 11: Position the fold template over the top of Sections 1 and 2, lining the edge up with Line 2 and fold back the paper. Trim the fabric with the *Add-A-Quarter* ruler.

Step 12: Position the third fabric piece next to Sec. 3. Slide the fabric under Sec. 3. Line the sew-side up with the raw edge of the trimmed quarter-inch seams allowance.

NOTE - Chain Piecing: Repeat steps 11-12 on each paper before moving onto Step 13.



Step 11



Step 12