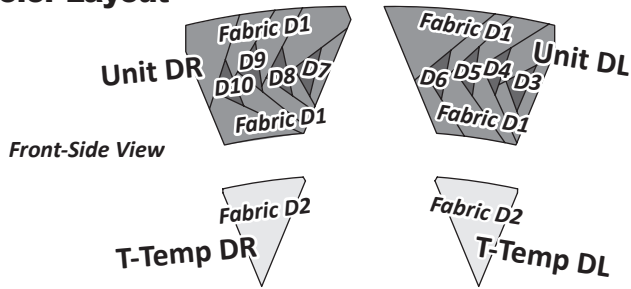


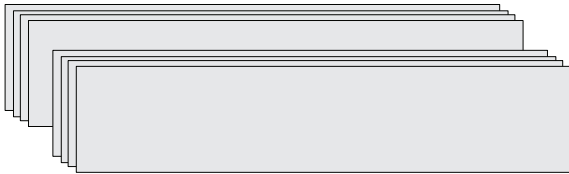
► **Color Layout**



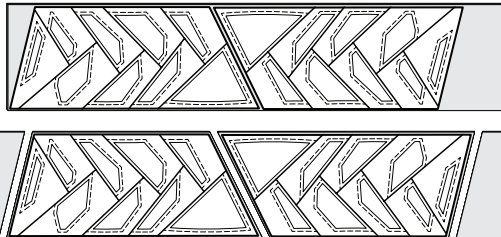
CUTTING INSTRUCTIONS, GROUP D

► **Units DL & DR, Bags DL & DR**

Background Fabric D1: Cut and stack (8) 9" by 42" strips into (2) stacks of (4) facing *right-side-up*.



Step 1: Position the *Unit DL Background Template Layout Sheet* onto the farthest left edge of (1) stack of (4) strips as shown. Using a ruler and rotary cutter, cut around the perimeter, then reposition the TLS to the second space, flipping it over.

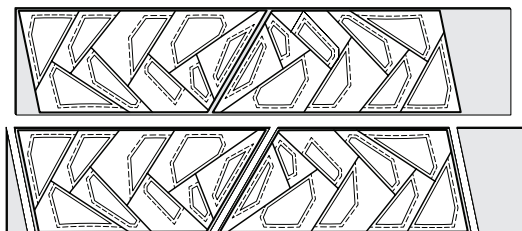


Step 2: Re-stack the sub-cut pieces *right-side-up* beneath the TLS, then slice through the paper and fabric following the Cut Lines in numerical order on the layout sheet.

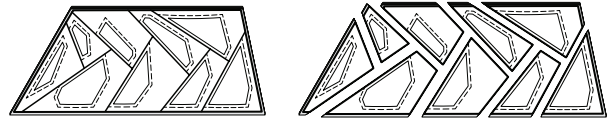


Step 3: Clip the Sec. Template and pieces beneath together and place into Bag #DL.

Step 4: Position the *Unit DR Background Template Layout Sheet* onto the farthest left edge of (1) stack of (4) strips as shown. Using a ruler and rotary cutter, cut around the perimeter, then reposition the TLS to the second space, flipping it over.



Step 5: Re-stack the sub-cut pieces *right-side-up* beneath the TLS, then slice through the paper and fabric following the Cut Lines in numerical order on the layout sheet.

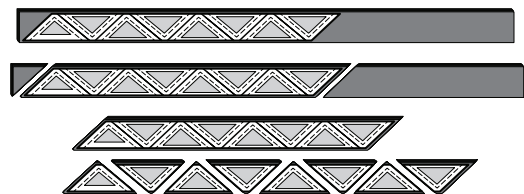


Step 6: Clip the Sec. Template and pieces beneath together and place into Bag #DR.

Accent Fabrics D3 to D10: Cut and stack (8) 2-1/2" by 42" strips facing *right-side-up*.



Step 1: Position (1) *Unit DR & DL Accent Template Layout Sheet* onto the stack. Cut the template and fabric apart on the Cut Lines, moving from one to the next in numerical order. When the cutting is completed, you will have (8) pieces beneath each Template.



Step 2: If you have cut all of the strips from the same fabric, clip the pieces together and place the DL-Sections in Bag #DL and the DR-Sections into Bag #DR.

Step 3: If you are using different fabrics, you must sort the pieces by color. Sort the triangles as follows:

- (8) Fabric D3 triangles under the Sec. DL-2 Template
- (8) Fabric D4 triangles under the DL-5 Template
- (8) Fabric D5 triangles under the DL-8 Template
- (8) Fabric D6 triangles under the DL-11 Template
- (8) Fabric D7 triangles under the DR-2 Template
- (8) Fabric D8 triangles under the DR-5 Template
- (8) Fabric D9 triangles under the DR-8 Template
- (8) Fabric D10 triangles under the DR-11 Template

Accent Fabric D4: Cut (2) 7" by 42" strips and stack them facing *right-side-up*.



Step 1: Position the *T-Template DL* onto the strip stack and cut (4) stacks of fabric pieces the same size as the T-Template. Then, position *T-Template DR* onto the strip stack and cut (4) stacks.



Step 2: Clip the fabric pieces together and place the *T-Template DL* stack into Bag #DL and *T-Template DR* stack into Bag #DR.